

SPECIAL UNIT JOB REQUEST - ACRYLX

Date: _____ OF _____

Order No: _____ / _____

LOAD No: _____

CSR: _____

Checked By: CL

Sold To:
 Model No: XSS3682RRF.625LWHT-ADA

Ship To: 0
0
 Hand: **LEFT** Color: **WHITE**

Drawing#: _____ Shipping: Serial No. _____

P R O D U C T I O N

THRESHOLD 5/8" DELETE BOTTOM BASE STEAM WHIRLPOOL BASE
 Easy Base TRI-CELL REINFORCE FOR FUS ON RIGHT MOLDED SEAT ON
 REINFORCEMENT YES NO Armor Core NON-STANDARD FBP FWB

 REINFORCE PER DRAWING

 RECESSED DRYWALL RECEIVER FLANGE ON BOTH SIDES

ARMOR COAT

F A B 1 & 2

CURTAIN ROD/W ROD CUPS ROD HEIGHT 73 5/8"
 DRILL FOR PLUMBING ON
 DRILL FOR BAR **446SS** INSTALL BAR **Horz On Left Wall**
 DRILL FOR BAR **117SS** INSTALL BAR **Vert On Left Wall**
 DRILL FOR BAR INSTALL BAR
 DRILL FOR BAR INSTALL BAR
 DRILL FOR BAR INSTALL BAR
 DRILL FOR SLIDE BAR INSTALL SLIDE BAR

F A B 3

DRILL & INSTALL SEAT **S3221HDPER** ON RIGHT
 CUT ROD 172SS

F A B 4

INSTALL VALVE NO. _____
 ASSEMBLE HOSE/HAND HELD SHOWER

F A B 5

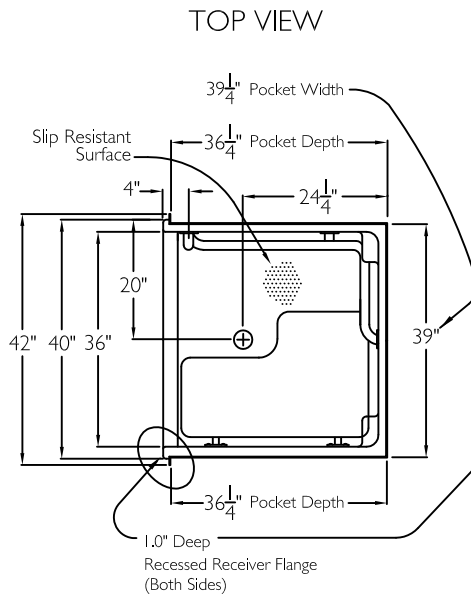
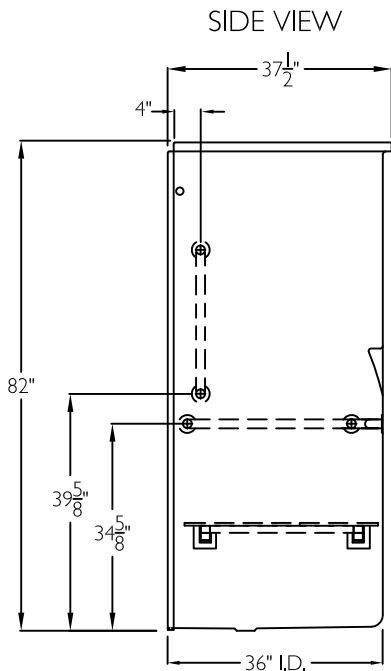
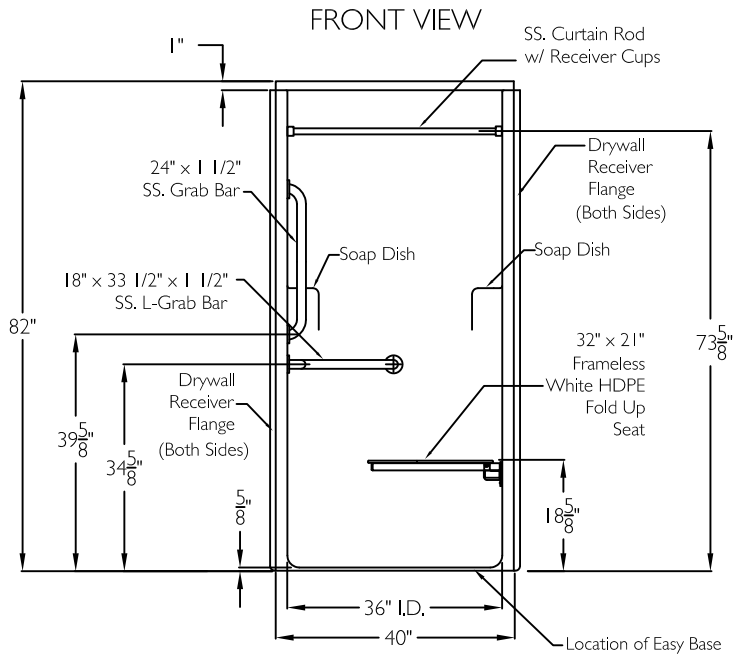
Cut Threshold 5/8"

Order # 000 * * *



Model #





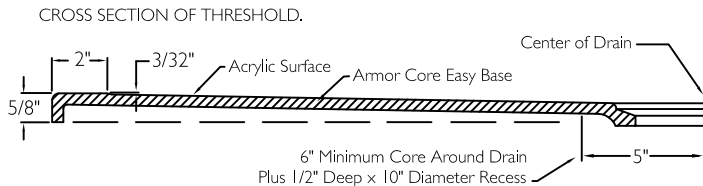
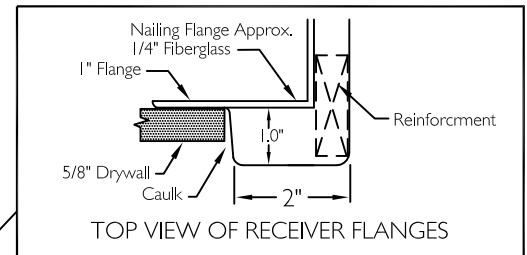
XSS3682 BF .625 RRF LH SUBMITTAL

This shower enclosure shall be model XSS 3682 BF .625, left. Finished surface shall be of a sanitary grade AcrylX™ applied acrylic. The base shall be attached to the sump in such a manner to form an integral part with an inner and outer coating of polyester resin. Unit construction shall be of a molded reinforced fiberglass with a 15% minimum fiberglass content. The unit shall have outside dimensions of 42" x 37 1/2" x 82". The unit shall meet IAPMOZ124, CSA B45.5-11, HUD-UM73A, ADA, ICC/ANSI A117.1, TAS, and Home Innovation Research Lab.

NOTE: This model shall be an ABGshipnow.com program unit.

HANDED BY THE VALVE

The enclosure shall be equipped with the following accessories: 1) One 18" x 33 1/2" x 1 1/2" diameter stainless steel horizontal L-grab bar, 2) One 24" x 1 1/2" diameter stainless steel vertical grab bar, both with 1 1/2" statute clearance, mounted with stainless steel bolts, and secured from the rear with 3" x 3" x 11 gauge metal mounting plates, 3) 32" x 21" white frameless HDPE fold up seat, 4) One inch diameter, 18 gauge stainless steel curtain rod with receiver cups, 5) Recessed receiver flange on both sides, 6) Armor Core Easy Base, 7) 5/8" threshold.



THIS UNIT FEATURES THE OUTSIDE DIMENSION OF 42" OF OVERALL WIDTH. THIS DOES NOT ALLOW FOR FULL ENCLOSURE OF THE BOLTS AND NUTS USED TO SECURE THE BARS AND SEAT IN PLACE. THE BOLT AND NUT COMBINATION SHOULD NOT PROTRUDE MORE THAN 3/4" ON EITHER SIDE OF THE SHOWER WALLS. THIS MAY REQUIRE THE NEED TO NOTCH STUDS TO ALLOW BOLT CLEARANCE FOR A DRYWALL ENCLOSED FIRE WALL INSTALLATION. ADJUSTMENT OF THE WALL BOARD MAY BE NECESSARY TO PROVIDE CLEARANCE OF THE BOLT(S) WHILE MAINTAINING THE INTEGRITY OF THE DRYWALL ENCLOSED FIRE WALL ENCLOSURE.

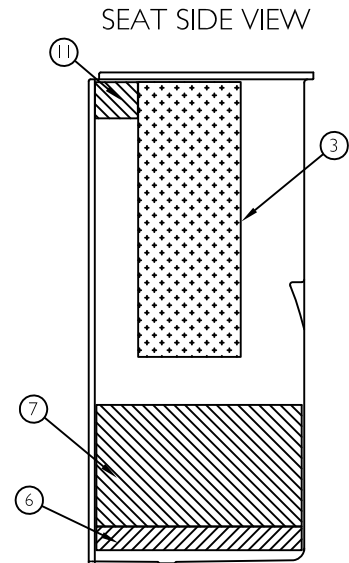
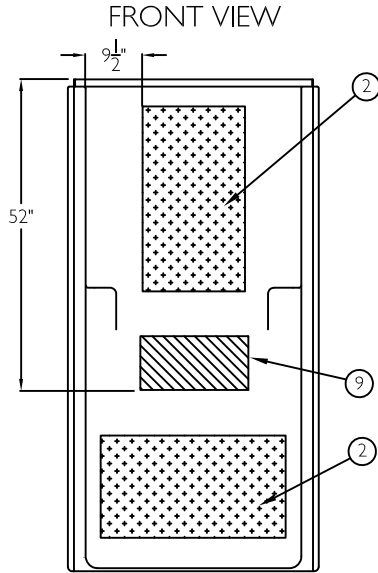
NOTE: THIS UNIT WILL NOT ACCEPT A DOOR.

| | | | | |
|------------|------------------------|------|--|---|
| Job Name | Approved By Print Name | Date | XSS3682 BF .625 RRF LH | |
| Project No | Approved By Signature | | Model No. XSS 3682 BF .625 | |
| | Architect | | Drawing No. XSS 3682 BF .625 RRF SLB VB FHDP CR Easy Base LH | |
| | Engineer | | Date Issued. 4-3-12 | Drawing Rev. 2-5-19 |
| | Rep | | Material. AcrylX™ applied acrylic | |
| | Wholesaler | | Color. | |
| | Comments | | | Dimensions are in inches. Due to the nature of the materials dimensions may vary ± 1/2" |

XSS3682 BF .625 RRF LH

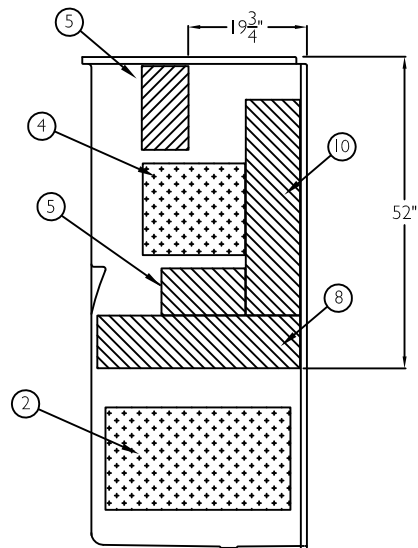
SUBMITTAL

This shower enclosure shall be model XSS 3682 BF



| ITEM NO. | PART NUMBER | QTY. |
|----------|---------------------------------|------|
| 1 | 3682 BF | 1 |
| 2 | 17" x 31" (CUT FROM 5174DCORR) | 3 |
| 3 | 17" x 46" (5174DCORR) | 1 |
| 4 | 17" x 15" (5174DCORR) | 1 |
| 5 | 8" x 14" x .250 (4848CORR-25) | 2 |
| 6 | 34" x 25" x .250 (4848CORR-25) | 1 |
| 7 | 34" x 17" x .125 (4848CORR-125) | 1 |
| 8 | 34" x 9" x .250 (4848CORR-25) | 1 |
| 9 | 18" x 9" x .250 (4848CORR-25) | 1 |
| 10 | 7" x 36" x .250 (4848CORR-25) | 1 |
| 11 | 6" x 7" x .250 (4848CORR-25) | 1 |

VALVE SIDE VIEW



| APPLICATION: | THICKNESS: |
|-----------------|------------|
| APPLIED ACRYLIC | 18.5 MIL |
| 1ST LAMINATION | 60 MIL |
| CORRUGATED | 25 MIL |
| ARMORCORE | 75 MIL |
| 2ND LAMINATION | 50 MIL |

ALL REINFORCED AREAS TO BE ENCAPSULATED BY SECOND LAMINATION.
OVERALL LAMINATION THICKNESS TOLERANCE: -0/+80 MILS.

| Job Name | Approved By | Name | Date | XSS3682 BF .625 RRF LH | |
|------------|-------------|------|---|---|----------------------|
| Project No | Architect | | | Model No. XSS 3682 BF .625 | |
| | Engineer | | | Drawing No. XSS 3682 BF .625 RRF SLB VB FHDP CR Easy Base LH-BP | |
| | Rep | | | Date Issued. | Drawing Rev. I-21-19 |
| | Wholesaler | | | Material. AcrylX™ applied acrylic | |
| | Comments | | | Color. | |
| | | | Dimensions are in inches. Due to the nature of the materials dimensions may vary ± 1/2" | | |