

**Talis S**  
**Single-Hole Faucet 210 with Swivel Spout and Pop-Up Drain, 1.2 GPM**  
 Finishes : **chrome** Part no. : **72105001**



**Description**

**Features**

- Swivel range 120°
- Aerated spray
- Flow: 1.2 GPM (4.5 L/Min)
- Ceramic cartridge
- Includes pop-up drain

**Item details**

List Price \$ 432.00

**Technology**



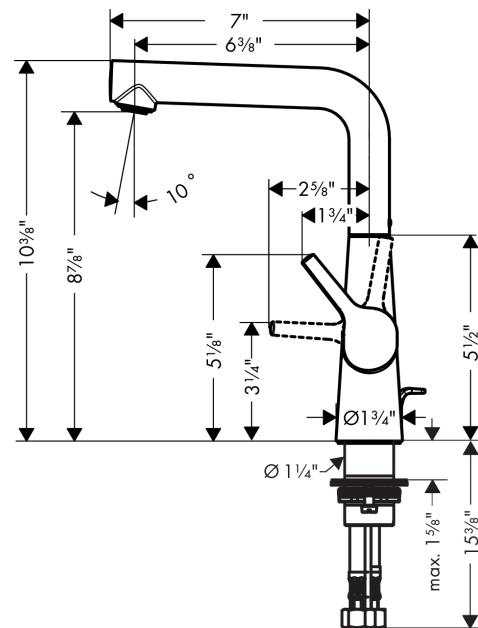
**Compliance**



**Product image**



**Scale drawing**

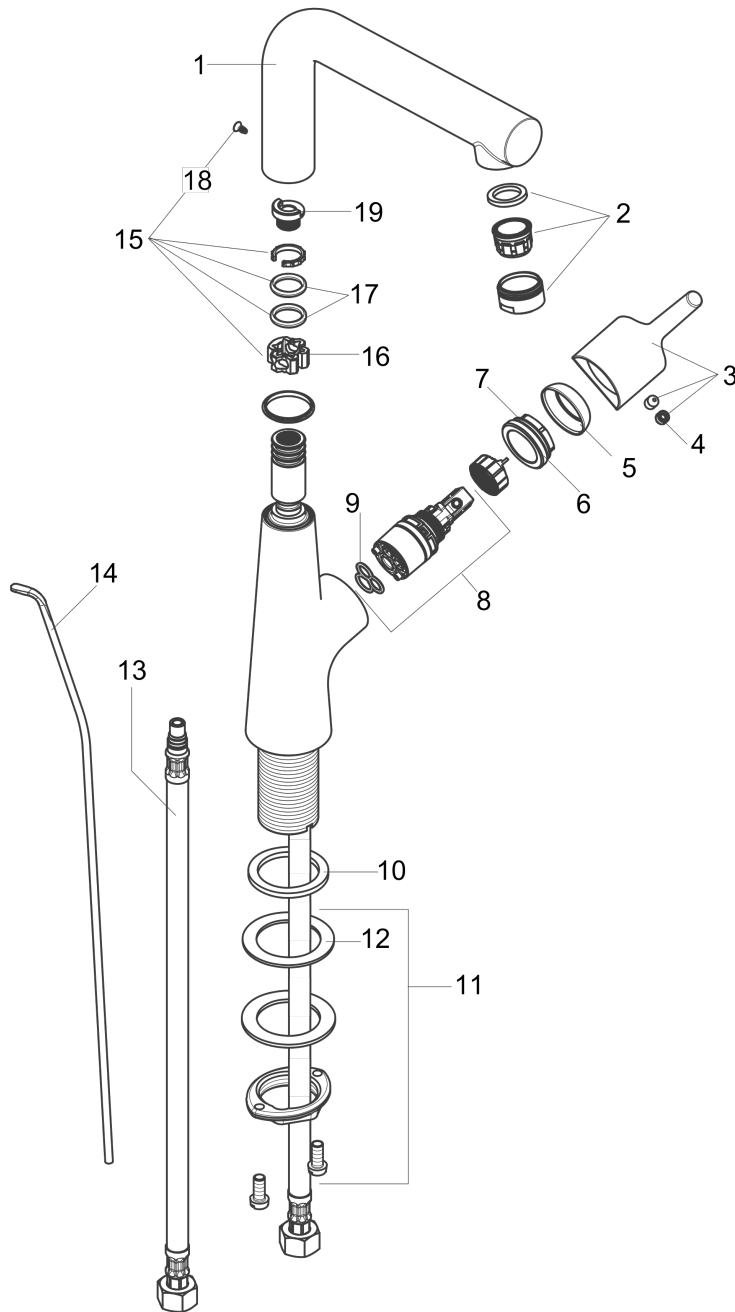


**Talis S**  
**Single-Hole Faucet 210 with Swivel Spout and Pop-Up Drain, 1.2 GPM**  
 Finishes : **chrome** Part no. : **72105001**



Exploded drawing

Year of production: >09/16



**Talis S****Single-Hole Faucet 210 with Swivel Spout and Pop-Up Drain, 1.2 GPM**Finishes : **chrome** Part no. : **72105001****Spare parts list**

Year of production: &gt;09/16

Pos.	Description	Part no.	Price	PU
1	spout cpl.	92775000	-	1
2	aerator M24x1 (4,5 l/min)	92877000	-	1
3	handle	92771000	-	1
4	screw cover	95704000	-	1
5	flange	95493000	-	1
6	nut	95178000	-	1
7	O-ring 24x2	98388000	-	1
8	cartridge, assy	95973001	-	1
9	seal	98865000	-	1
10	flat seal	98749000	-	1
11	fixing set (Ø 32)	13961000	-	1
12	lever collar	97548000	-	1
13	connection hose 18½" M8x0,75 3/8"	96321001	-	1
14	pull rod	96657000	-	1
15	sealing set	92646000	-	1
16	axialring	97558000	-	1
17	O-Ring 14x2,5	98189000	-	1
18	screw	97662000	-	1
19	set of locating rings (110° / 150°)	98486000	-	1
a	pop up waste	88509000	-	1
b	fixation extension 35 mm	13898000	-	1