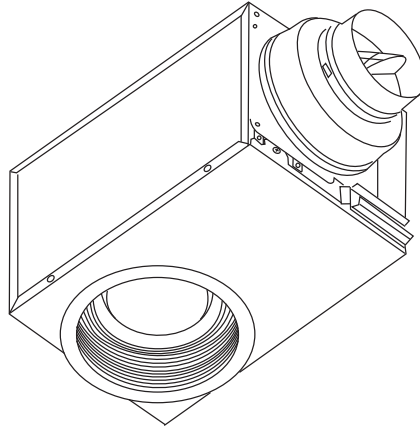


# Service Manual

Ventilating Fan  
(North America Market)

FV-08VRE1



| Model No. | Air direction | Voltage (V) | Frequency (Hz) | Duct diameter (inches) | Noise at 0.1"WG (sones) | Power consumption (W) |      | Speed at 0.1"WG (rpm) | Air volume at 0.1"WG (CFM) | Weight lb.(kg) |
|-----------|---------------|-------------|----------------|------------------------|-------------------------|-----------------------|------|-----------------------|----------------------------|----------------|
|           |               |             |                |                        |                         | Fan                   | Lamp |                       |                            |                |
| FV-08VRE1 | Exhaust       | 120         | 60             | 4                      | 0.8                     | 20.5                  | 13.0 | 1378                  | 80                         | 10.0(4.5)      |
|           |               |             |                | 6                      | 0.8                     | 20.5                  | 13.0 | 1378                  | 80                         |                |

HVI Certified performance based on HVI Procedures 915, 916 and 920.

## ⚠ WARNING

This service information is designed for experienced repair technicians only and is not designed for use by the general public. It does not contain warnings or cautions to advise non-technical individuals of potential dangers in attempting to service a product. Products powered by electricity should be serviced or repaired only by experienced professional technicians. Any attempt to service or repair the product or products dealt with in this service information by anyone else could result in serious injury or death.

## IMPORTANT SAFETY NOTICE

There are special components used in this equipment which are important for safety. These parts are marked by  $\triangle$  in the Schematic Diagrams, Exploded Views and Replacement Parts List. It is essential that these critical parts should be replaced with manufacturer's specified parts to prevent shock, fire or other hazards. Do not modify the original design without permission of manufacture. We suggest to handle such parts after the static electricity prevention. It is forbidden to touch the PCB parts by bare hands during the repairing process.

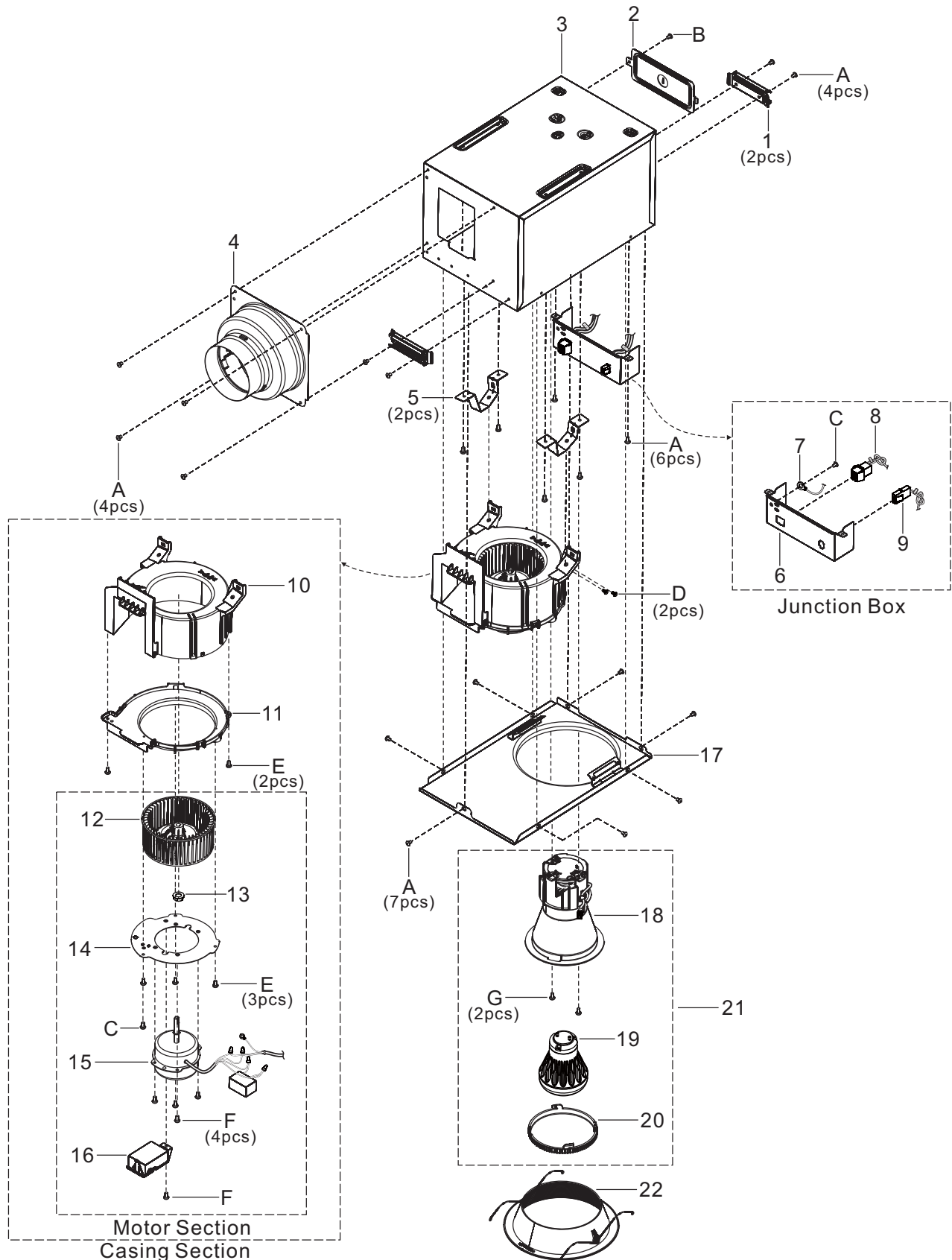
## CONTENTS

|                             | PAGE |
|-----------------------------|------|
| 1.Parts Identification----- | 1~3  |
| 2.Wiring Diagram-----       | 4    |
| 3.Parts List-----           | 5~6  |

# 1. Parts Identification

FV-08VRE1

## Main Body Section





# 1. Parts Identification

FV-08VRE1

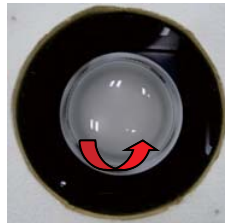
## Replace Lamp Method

Step 1.



Remove the trim assembly

Step 2.



Remove the lamp cover

Step 3.



Replace the LED lamp

## Replace Motor Unit Method

Step 1.



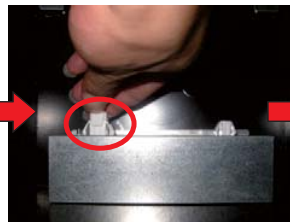
Remove 2pcs screws

Step 2.



Unplug light unit assembly connector, Then take out the whole assembly

Step 3.



Unplug motor unit connector

Step 4.



Pull out the lead wire from Casing clamp

Step 5.



Remove 2pcs screws

Step 6.



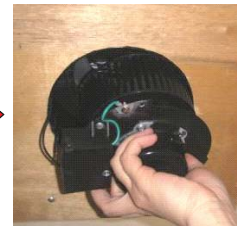
Move the casing section to the hole position

Step 7.



Remove 3pcs screws

Step 8.



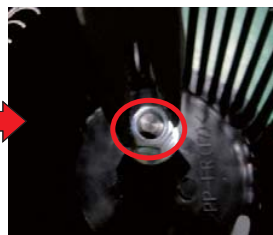
Take out the motor section

Step 9.



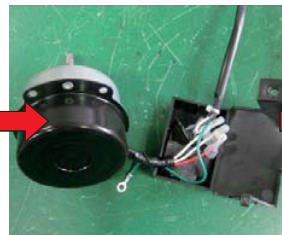
Remove 6pcs screws

Step 10.



Remove the blade fixing nut

Step 11.



Take out the motor unit and condenser box

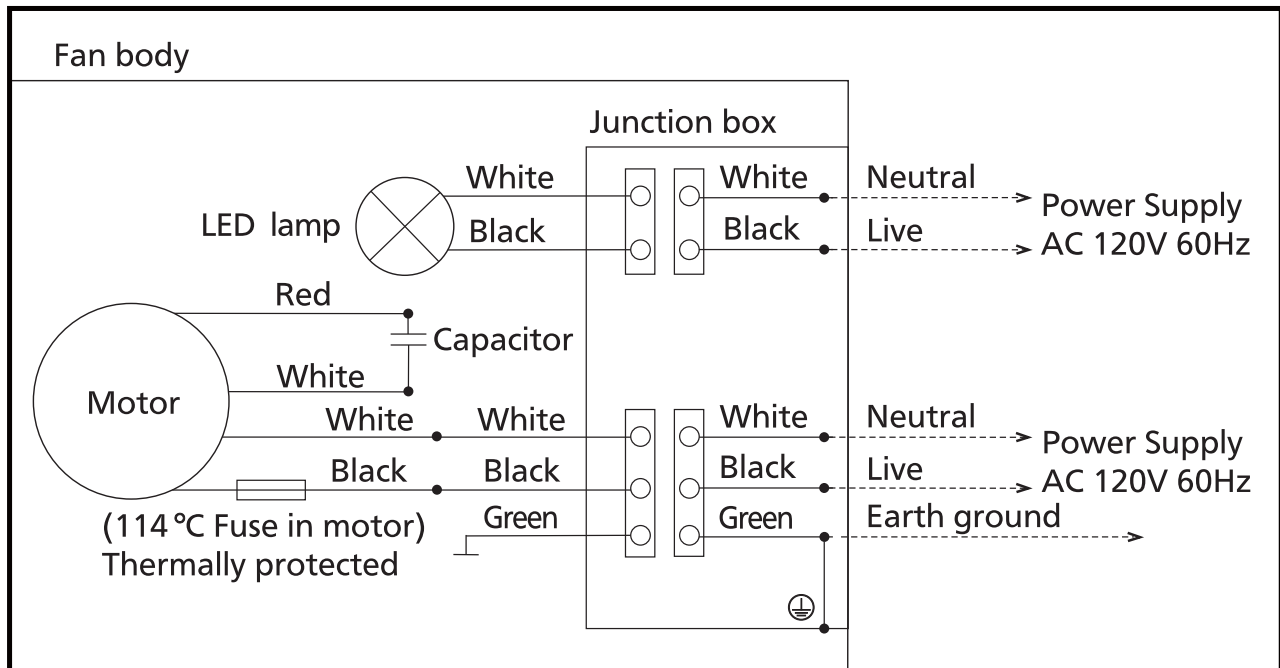
Step 12.



Replace the motor unit

## 2. Wiring diagram

FV-08VRE1




### 3. Parts List

FV-08VRE1

| No.  | Part No.    | Part Name              | Q'ty | Remark                            |
|------|-------------|------------------------|------|-----------------------------------|
| 1    | FFV0420027S | Bracket Cover          | 2    |                                   |
| 2    | FFV6710026S | Wiring Cover           | 1    |                                   |
| 3    | FFV1600116S | Frame Assembly         | 1    |                                   |
| 4    | FFV0000125S | Adapter Assembly       | 1    | ⚠                                 |
| 5    | FFV0800002S | Casing Support         | 2    |                                   |
| 6    | FFV2800015S | Junction Box           | 1    |                                   |
| 7    | FFV3402103S | Earth Lead Wire        | 1    | ⚠                                 |
| 8    | FFV0900055S | Connector Assembly V   | 1    | ⚠                                 |
| 9    | FFV0900056S | Connector Assembly L   | 1    | ⚠                                 |
| 10   | FFV0790097S | Casing                 | 1    |                                   |
| 11   | FFV3730091S | Motor Support          | 1    |                                   |
| 12   | FFV0400086S | Fan                    | 1    |                                   |
| 13   | FFV7020021S | Nut                    | 1    |                                   |
| 14   | FFV3730092S | Motor Set Plate        | 1    |                                   |
| 15   | FFV3730093S | Motor Unit             | 1    | ⚠                                 |
| 16   | FFV0760050S | Condenser Box          | 1    |                                   |
| 17   | FFV1600117S | Frame Cover Assembly   | 1    |                                   |
| 18   | FFV3410039S | Light Unit Assembly    | 1    | ⚠                                 |
| 19   | FFV3410040S | LED Lamp               | 1    | ⚠                                 |
| 20   | FFV3410036S | Lamp Cover             | 1    |                                   |
| 21   | FFV3410041S | Light Section          | 1    | ⚠                                 |
| 22   | FFV5840030S | Trim Assembly          | 1    | Not Include 2pcs Bind Tap Screw ⚠ |
| 23   | FFV4020817S | Name Plate             | 1    |                                   |
| 24   | FFV1320001S | ESP Mark               | 1    |                                   |
| 25   | FFV6730041S | Warning Label          | 1    |                                   |
| 26   | FFV2260003S | UL Mark                | 1    |                                   |
| 27   | FFV6730082S | Warning Label          | 1    |                                   |
| 28   | FFV2260002S | HVI Mark               | 1    |                                   |
| 29   | FFV0810002S | Caution Label          | 1    |                                   |
| 30   | FFV4730001S | T24 Mark Label         | 1    |                                   |
| 31   | FFV5720015S | Scale Tape             | 1    |                                   |
| 32   | FFV6730083S | Wiring Label           | 1    |                                   |
| 33   | FFV5840031S | Trim Plate Assembly    | 1    |                                   |
| 34   | FFV5840032S | Trim Pad 1             | 1    |                                   |
| 35   | FFV2540172S | Operation Instructions | 1    | English,For USA/CA Market         |
| 36   | FFV2540173S | Operation Instructions | 1    | Spanish,For USA Market            |
| (36) | FFV2540174S | Operation Instructions | 1    | French,For CA Market              |

### 3. Parts List

FV-08VRE1

| No. | Part No.    | Part Name             | Q'ty | Remark   |
|-----|-------------|-----------------------|------|--|
| 37  | FFV0010236S | Accessory A           | 1    |  |
| 38  | FFV0420028S | Bracket Assembly 1    | 1    |  |
| 39  | FFV4710334S | Right Pad             | 2    |  |
| 40  | FFV9001003S | Packing Pad           | 1    |  |
| 41  | FFV0420029S | Bracket Assembly 2    | 1    |  |
| 42  | FFV4710335S | Left Pad              | 2    |  |
| 43  | FFV9001109S | Packing Case Assembly | 1    |  |
| A   | FFV7000018S | Truss Tap Screw       | 21   |  |
| B   | FFV7000108S | Truss Tap Screw       | 1    |  |
| C   | FFV7030006S | Bind Screw            | 2    | For Fixing Earth Lead Wire  |
| D   | FFV7000214S | Bind Tap Screw        | 2    |  |
| E   | FFV7000073S | Truss Tapping Screw   | 5    |  |
| F   | FFV7000079S | Pan Tap Screw         | 5    |  |
| G   | FFV7000202S | Bind Tap Screw        | 2    |  |