

0.125GPF High-Efficiency Washout Urinal

FEATURES

- Full size urinal with concealed integral trap
- Washout flush action with 3/4" top or back spud inlet
- 0.125 GPF with any TOTO flush valve shown below
- Complete with low profile dome strainer

MODELS

- UT445U
Urinal with 3/4" top spud inlet
- UT445UV
Urinal with 3/4" back spud inlet

ADDITIONAL ITEMS (sold separately)

RECOMMENDED FLUSH VALVES	
UT445U	UT445UV
EcoPower® Flush Valve	EcoPower®
TEU1UN12#CP	TEU2UN11#SS - 14" x 12"
	TEU3UN11#SS - 4" x 4"

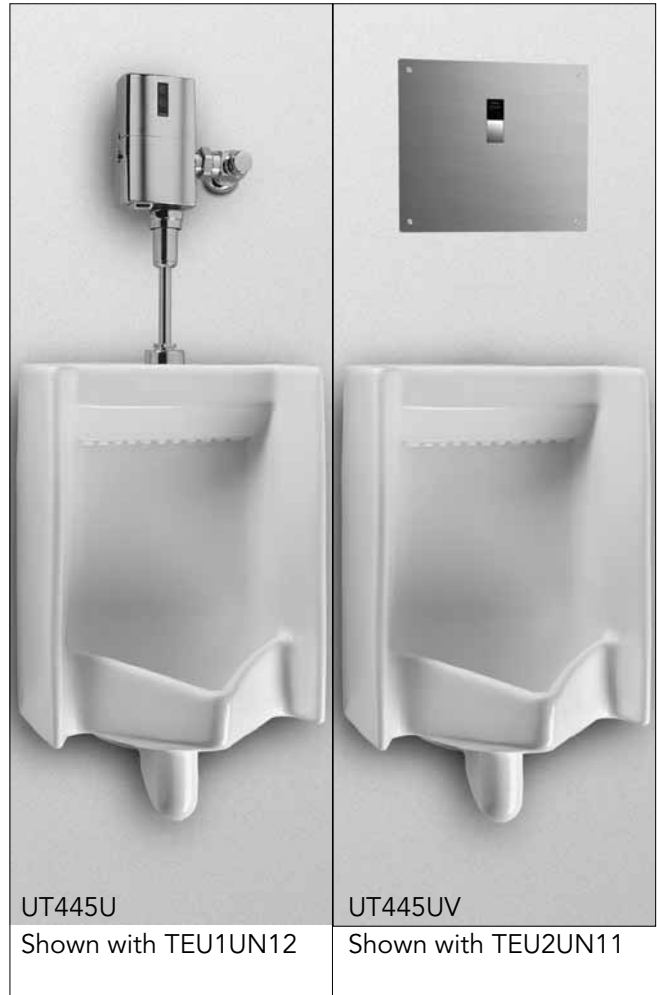
COLORS/FINISHES

- #01 Cotton

PRODUCT SPECIFICATION

The wall-mounted, ADA compliant, high-efficiency washout urinal shall be 0.125GPF/0.473LPF when paired with a TOTO 0.125GPF flushometer valve. Urinal specified shall be **TOTO Model UT445U**__.

Flush valve specified shall be **TOTO Model** _____.



UT445U

Shown with TEU1UN12

UT445UV

Shown with TEU2UN11

CODES/STANDARDS

- Meets and exceeds ASME A112.19.2/CSA B45.1,
- Certifications: IAPMO(cUPC), State of Massachusetts, City of Los Angeles
- Code compliance: UPC, IPC, NSPC, NPC Canada, and others
- Legislative compliance: California AB715, California Green Building Code
- ADA compliant



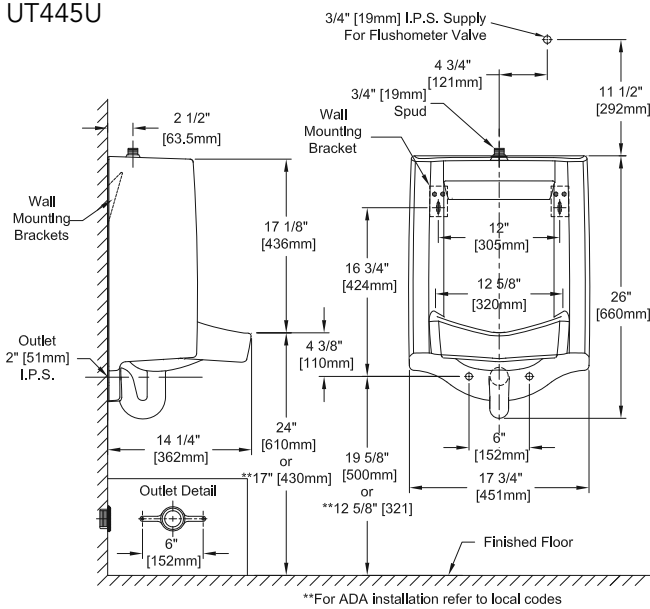
UT445U(V)

0.125GPF High-Efficiency Washout Urinal

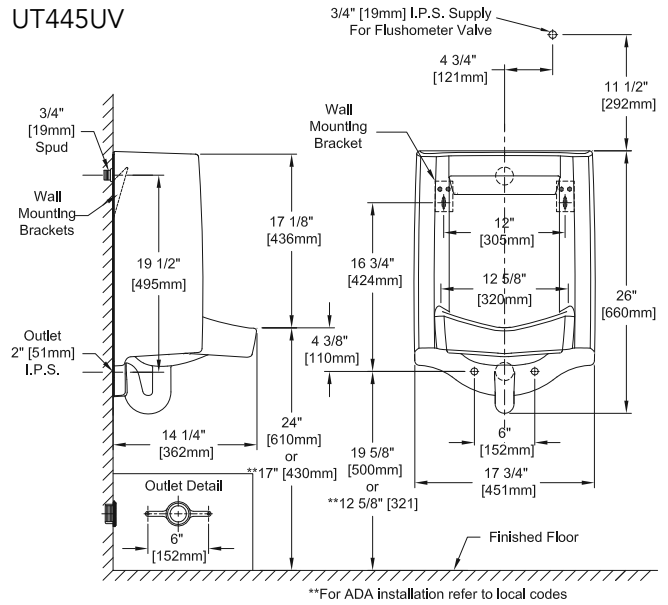
SPECIFICATIONS

- Water Use 0.125GPF/0.473LPF
- Flush System Washout flush action
- Warranty One Year Limited Warranty
- Material Vitreous china
- Min. Water Pressure 15 psi (flowing)
- Height (Urinal Only) 26"
- Width 17-3/4"
- Rim 14-1/4"
- Shipping Weight UT445U(V) - 60lbs
- Shipping Dimensions UT445U(V)
29" L x 18" W x 16" H

UT445U



UT445UV



TOTO

These dimensions and specifications are subject to change without notice