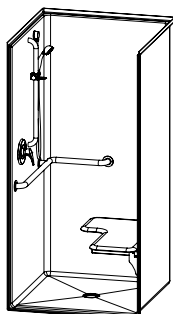


36" Transfer Showers: LH/RH = SEAT location.  
Fixture is located opposite seat. Reference submittal sheet for details.

## 1363BFSC




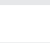






36 x 36 x 75 1/4 Interior  
38 x 38 1/4 x 77 Exterior  
AcrylX™ applied acrylic



ANSI configuration pictured.

### ADDITIONAL FEATURES

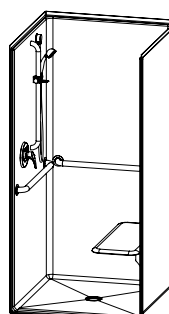
- 3/4" skirt
- NO interior threshold
- Level base
- Barrier free when properly installed
- Smooth wall
- Center drain
- ADA, ANSI, TAS

CONFIGURATION	DRAIN	SEAT	PRICE
Base	Center		\$1,093
	Center		\$1,317
  	Center	LH/RH	\$1,944
  	Center	LH/RH	\$2,549
  	Center	LH/RH	\$2,679

## 1363BFSCMA

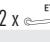
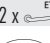



36 x 36 x 75 1/4 Interior  
38 x 38 1/4 x 77 Exterior  
AcrylX™ applied acrylic

Massachusetts only



### ADDITIONAL FEATURES

- 3/4" skirt
- NO interior threshold
- Level base
- Barrier free when properly installed
- Smooth wall
- Center drain
- 521 CMR

CONFIGURATION	DRAIN	SEAT	PRICE
2 x 	Center		\$1,620
2 x  	Center	LH/RH	\$2,247
 2 x 	Center	LH/RH	\$2,852

### ADDITIONAL INFO

#### COLORS

#### STOCK

White

#### UPGRADED

Almond\*

Biscuit

Bone\*

\*Available on AcrylX™ models only.

Aquatic reserves the right to discontinue models, colors, options and trim finishes without notice.

OPTIONS PRICE LIST	PRICE
AcrylX™ Stock color	No charge
AcrylX™ Upgraded color	\$35
L-shaped grab bar: 18" x 32"	\$224
Straight grab bar: 18"	\$130
L-shaped fold-up seat - cushioned (stock)	\$627
L-shaped fold-up seat - phenolic white or phenolic teak	\$652
Pressure balancing mixing valve	\$312
Handheld shower assembly with slide bar	\$293
Shower curtain for 36" curtain rod	\$70
Stainless steel curtain rod: 36"	\$52
Brass drain	\$32
Soap dish - stainless steel	\$82
Vinyl flexible dam	\$87
Removable threshold	\$131
Finish repair kit	\$198
Grab bar reinforcement - per wall (all flat surfaces)	\$58
Crating	\$440
* Additional grab bars available. See page 158.	

OPTIONS PRICE LIST	PRICE
AcrylX™ Stock color	No charge
AcrylX™ Upgraded color	\$35
L-configured etched bars: (2) 30"	\$334
Rectangular fold-up seat - cushioned (stock)	\$627
Rectangular fold-up seat - phenolic white or phenolic teak	\$652
Pressure balancing mixing valve	\$312
Handheld shower assembly with slide bar (MA compliant)	\$293
Shower curtain for 36" curtain rod	\$70
Stainless steel curtain rod: 36"	\$52
Brass drain	\$32
Soap dish - stainless steel	\$82
Vinyl flexible dam	\$87
Removable threshold	\$131
Finish repair kit	\$198
Crating	\$440
* Additional grab bars available. See page 158.	