



Submittal Sheet

Aquatic products may be specified as Lasco Bathware.

13636BFSCCTR

ADA Compliant

CUSTOMER: _____

JOB NAME: _____

PO #: _____ QUOTE #: _____

DATE: _____ QUANTITY: _____

SHIP TO: _____

_____/_____/_____
PLUMBING CONTRACTOR APPROVAL DATE

_____/_____/_____
GENERAL CONTRACTOR APPROVAL DATE

_____/_____/_____
ENGINEER APPROVAL DATE

_____/_____/_____
ARCHITECT APPROVAL DATE

STANDARD FEATURES

- Pre-leveled base
- AcrylX™ applied acrylic surface
- 1 1/8" skirt
- Compliant when properly installed
- Center drain outlet
- Integral front trench drain
- Lifetime Limited Warranty Residential Use/ 30-year Commercial Use
- 12" x 24" subway tile
- Slip resistant, textured bottom [ASTM F-462]
- Code compliant when fully equipped and installed according to guidelines

CONFIGURATION (handed by seat location)

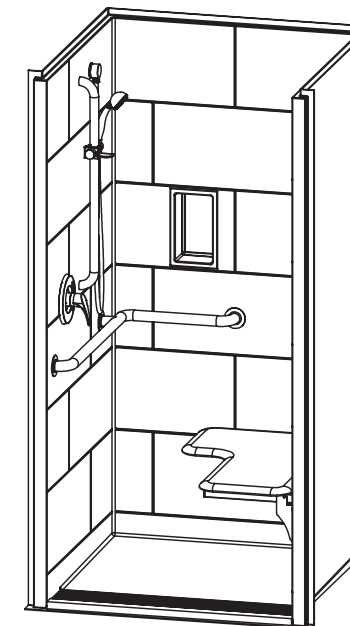
- ☐ Shell reinforced for future accessory installation
 - Seat Wall ☐ LH ☐ RH
 - ☐ Optional vertical bar reinforcement (entry wall)
 - ☐ LH ☐ RH ☐ Both
- ☐ Fully configured with seat — ADA
 - Seat Wall (must choose one) ☐ LH ☐ RH
 - Includes 1 1/2" diameter stainless L-shaped grab bar; white cushioned, L-shaped fold-up seat; pressure balancing mixing valve; hand-held shower assembly; and stainless steel grate. Grab bar, mixing valve and handheld shower installed opposite seat per ADA guidelines.

CUSTOM OPTIONS (not avail. if ADA configuration is selected)

- ☐ L-shaped fold-up seat ☐ LH ☐ RH
 - ☐ Cushioned white ☐ Phenolic teak ☐ Phenolic white
- Horizontal L-shaped grab bar
 - Stainless steel (1 1/2" dia.) ☐ LH ☐ RH
 - Powder-coated white (1 1/4" dia.) ☐ LH ☐ RH
- Fixture Wall ☐ LH ☐ RH ☐ Back wall
 - ☐ Hand-held shower assembly with 30" slide bar and 60" hose
 - ☐ Pressure balancing mixing valve
- Grate:
 - ☐ Stainless steel
 - ☐ White
 - ☐ Tamper-proof

OPTIONAL ACCESSORIES (available for all models)

- ☐ Large soap dish (12 1/2" W x 3 1/2" D x 1 1/2" H), shipped loose
- ☐ Small soap dish (7" W x 3 1/2" D x 1 1/2" H), shipped loose
- ☐ Curtain rod (Not ADA compliant)
- ☐ Shower curtain
- ☐ Brass drain
- Colors:
 - Standard ☐ White
 - Upgraded ☐ Biscuit ☐ Bone
 - ☐ Other (contact customer service for custom color options)
- ☐ Additional accessories:



Int. Dim. 36 W x 36 D x 76 3/4 H

Ext. Dim. 42 W x 38 1/8 D x 78 3/4 H

Skirt Ht. 1 1/8 skirt

Packaged Wt. 150 lbs.

Material AcrylX™ applied acrylic

Warranty Lifetime Limited Residential Use/ 30-year Commercial Use*

* See terms and conditions for details

inches

To complete your order, this document must be signed and faxed to the Aquatic Centralized Customer Service Center.

Fax (866) 544-5353 • Phone (800) 945-2726

For pricing of units and additional options, reference the Aquatic Price Book. • Please indicate custom changes on reverse side drawings.

Rev. 03.02.17

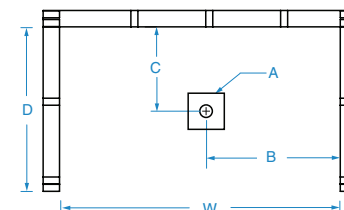


Submittal Sheet

Aquatic products may be specified as Lasco Bathware.

13636BFSCCTR ADA Compliant

Please indicate changes needed.

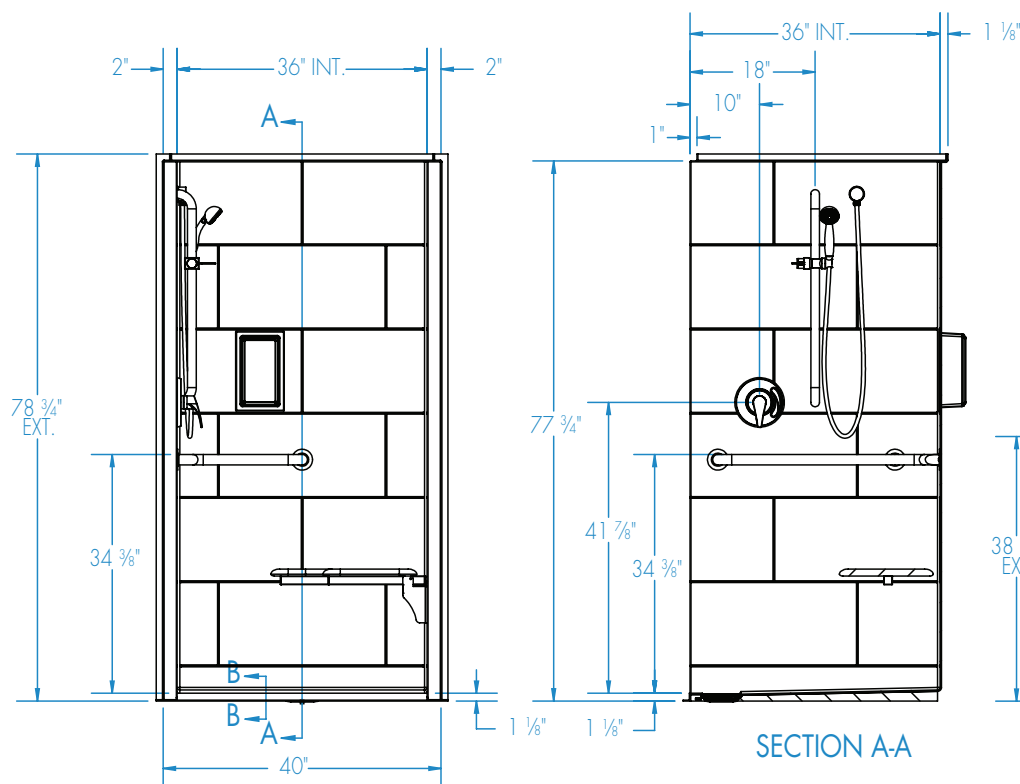


FRAMING DIMENSIONS inches (mm)

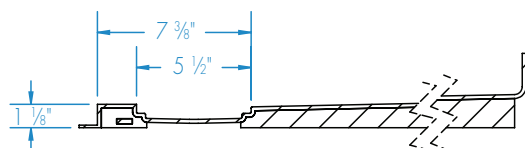
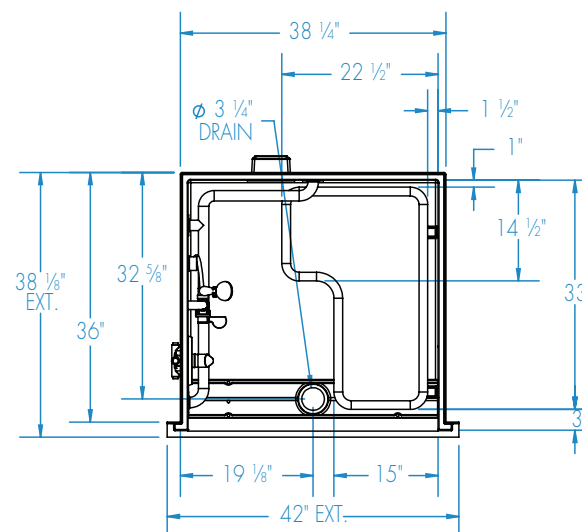
Type	D Depth	W Width	A	B	C
Alcove	36	38 1/4	Box Out	19 1/8	32 5/8

Installation Options:

1. Install in a recessed pit for rough-in floor installation.
2. Build sub-floor to level finished floor with top of shower threshold.



SECTION A-A



SECTION B-B
trench grate (included), not shown

ADA/ANSI compliant when fully equipped and installed according to guidelines.

Shell tolerance: +0, - 3/8" All other tolerances: ± 1"



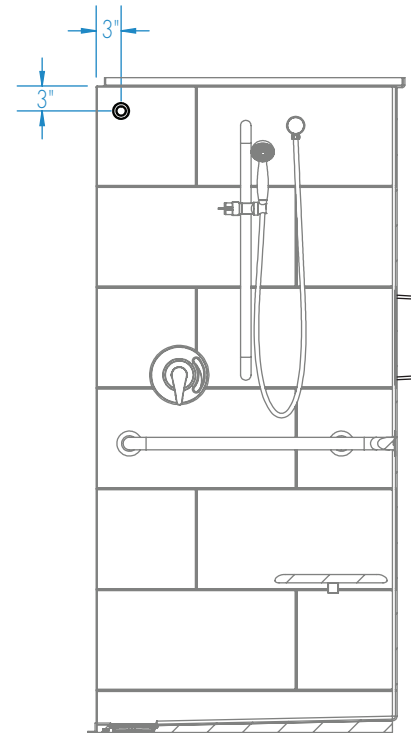
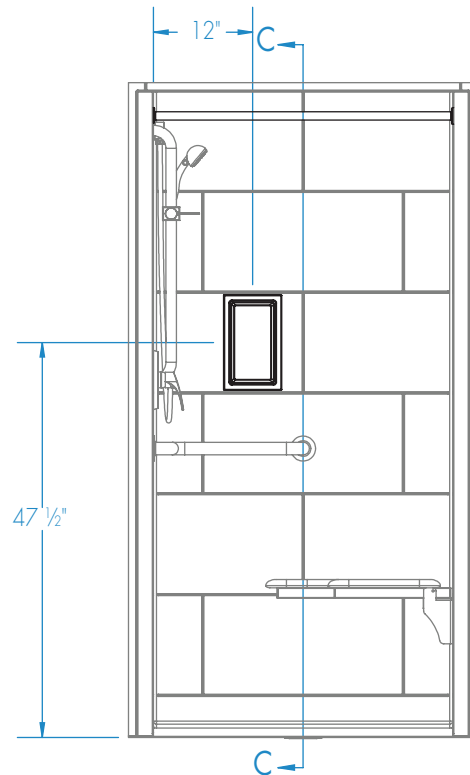
Submittal Sheet

Aquatic products may be specified as Lasco Bathware.

13636BFSC TTR ADA Compliant

Please indicate changes needed.

Curtain Rod and Soap Dish Locations



SECTION C-C

Shell tolerance: +0, - 3/8" All other tolerances: ± 1"