



Submittal Sheet

Aquatic products may be specified as Lasco Bathware.

14836BFSCCTR

without Seat

CUSTOMER: _____

JOB NAME: _____

PO #: _____ QUOTE #: _____

DATE: _____ QUANTITY: _____

SHIP TO: _____

_____/_____/_____
PLUMBING CONTRACTOR APPROVAL DATE

_____/_____/_____
GENERAL CONTRACTOR APPROVAL DATE

_____/_____/_____
ENGINEER APPROVAL DATE

_____/_____/_____
ARCHITECT APPROVAL DATE

STANDARD FEATURES

- Pre-leveled base
- AcrylX™ applied acrylic surface
- 1 1/8" skirt
- Compliant when properly installed
- Center drain outlet
- Integral front trench drain
- Lifetime Limited Warranty Residential Use/ 30-year Commercial Use
- 12" x 24" subway tile
- Slip resistant, textured bottom [ASTM F-462]
- Code compliant when fully equipped and installed according to guidelines

CONFIGURATION (handed by fixture wall)

- ☐ Shell reinforced for future accessory installation
Fixture wall ☐ LH ☐ RH ☐ Back wall
☐ Optional vertical bar reinforcement (entry wall)
☐ LH ☐ RH ☐ Both
- ☐ Fully configured without seat
Seat Location ☐ LH ☐ RH
Includes two 28" x 1 1/2" diameter stainless grab bar located on the side walls; one 36" x 1 1/2" diameter stainless grab bar located on the back wall; pressure balancing mixing valve; hand-held shower assembly; and stainless steel grate.

CUSTOM OPTIONS

Grab bars:

- Two 28" (side walls) and one 36" (back wall)
☐ Stainless steel (1 1/2" dia.)
☐ Powder-coated white (1 1/4" dia.)

Fixture Wall ☐ LH ☐ RH ☐ Back wall

- ☐ Hand-held shower assembly with 30" slide bar and 60" hose
☐ Pressure balancing mixing valve

Fixture wall ☐ LH ☐ RH ☐ Back wall

Grate:

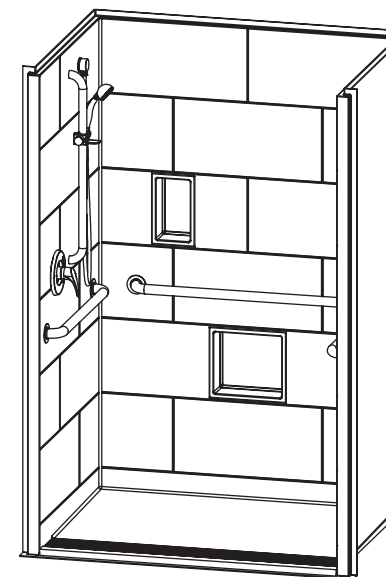
- ☐ Stainless steel
☐ White
☐ Tamper-proof

OPTIONAL ACCESSORIES (available for all models)

- ☐ Large soap dish (12 1/2" W x 3 1/2" D x 1 1/2" H), shipped loose
☐ Small soap dish (7" W x 3 1/2" D x 1 1/2" H), shipped loose
☐ Curtain rod
☐ Shower curtain
☐ Brass drain

Colors:

- Standard ☐ White
Upgraded ☐ Biscuit ☐ Bone
☐ Other (contact customer service for custom color options)
☐ Additional accessories:



Int. Dim. 48 W x 36 D x 76 3/4 H

Ext. Dim. 54 W x 38 1/8 D x 78 3/4 H

Skirt Ht. 1 1/8 skirt

Packaged Wt. 170 lbs.

Material AcrylX™ applied acrylic

Warranty Lifetime Limited Residential Use/ 30-year Commercial Use*

* See terms and conditions for details

inches

To complete your order, this document must be signed and faxed to the Aquatic Centralized Customer Service Center.

Fax (866) 544-5353 • Phone (800) 945-2726

For pricing of units and additional options, reference the Aquatic Price Book. • Please indicate custom changes on reverse side drawings.

Rev. 03.02.17

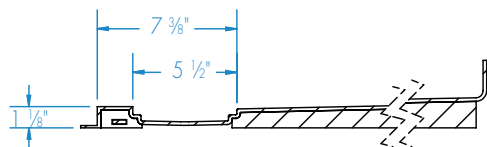
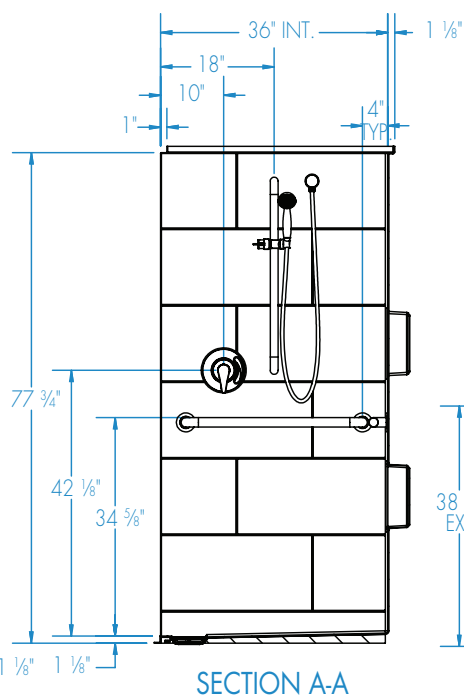
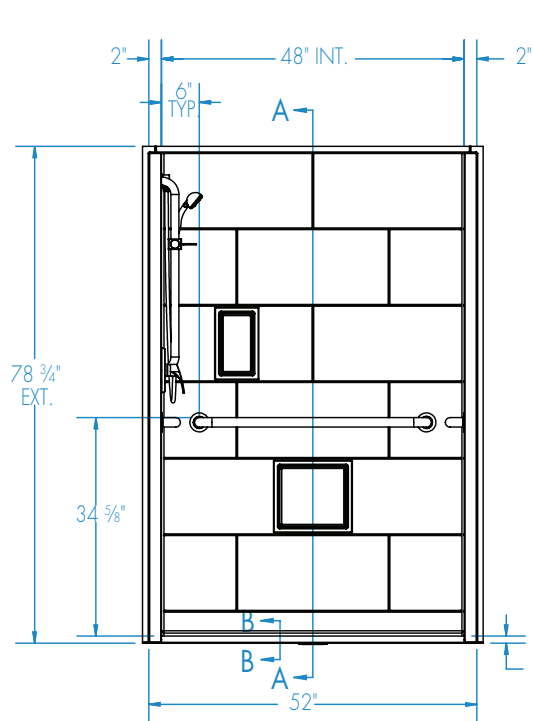


Submittal Sheet

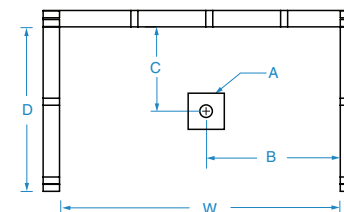
Aquatic products may be specified as Lasco Bathware.

14836BFSCCTR without Seat

Please indicate changes needed.



SECTION B-B
trench grate (included), not shown

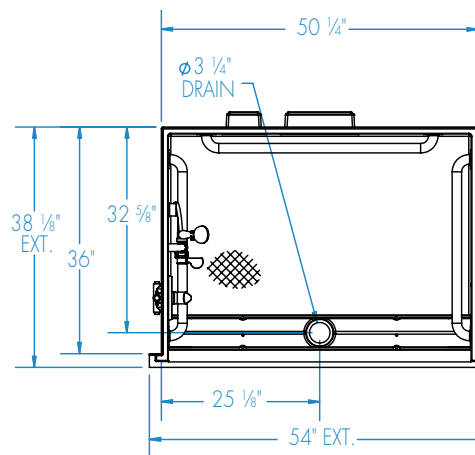


FRAMING DIMENSIONS inches (mm)

| Type | D Depth | W Width | A | B | C |
|--------|------------|------------|---------|--------|--------|
| Alcove | 36 | 50 1/4 | Box Out | 25 1/8 | 32 5/8 |

Installation Options:

1. Install in a recessed pit for rough-in floor installation.
2. Build sub-floor to level finished floor with top of shower threshold.



Shell tolerance: +0, - 3/8" All other tolerances: ± 1"



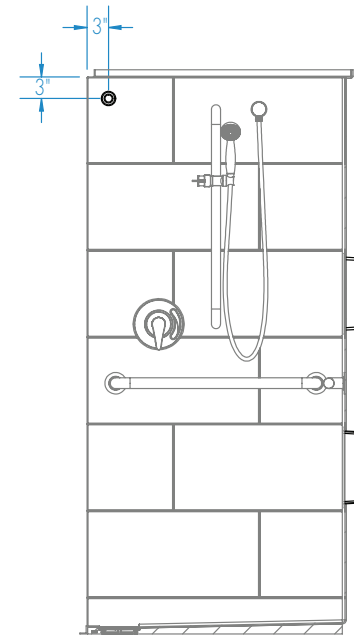
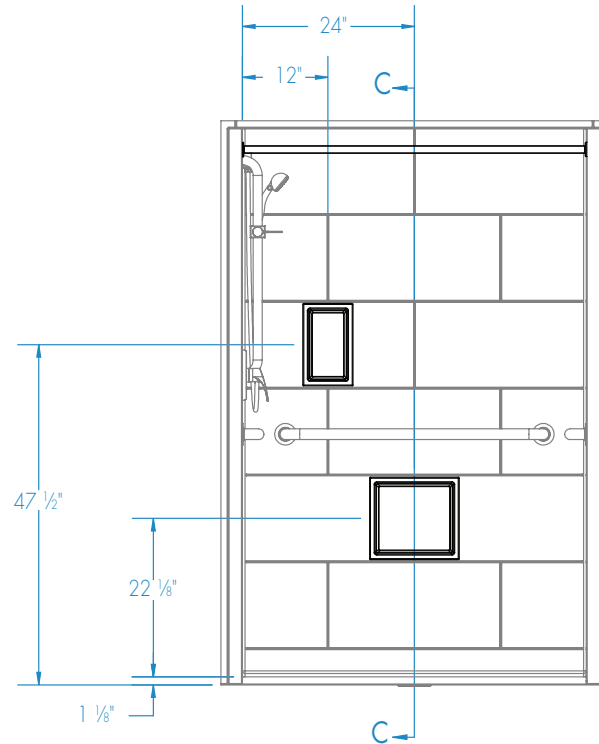
Submittal Sheet

Aquatic products may be specified as Lasco Bathware.

14836BFSCCTTR without Seat

Please indicate changes needed.

Curtain Rod and Soap Dish Locations (Standard Valve Configuration)



SECTION C-C

Shell tolerance: +0, - 3/8" All other tolerances: ± 1"

FAX TO THE AQUATIC CENTRALIZED CUSTOMER SERVICE CENTER (866) 544-5353

Rev. 03.02.17