



Submittal Sheet

Aquatic products may be specified as Lasco Bathware.

14836BFSCCTR

ANSI Type B Compliant with Seat

CUSTOMER: _____

JOB NAME: _____

PO #: _____ QUOTE #: _____

DATE: _____ QUANTITY: _____

SHIP TO: _____

_____/_____/_____
PLUMBING CONTRACTOR APPROVAL DATE

_____/_____/_____
GENERAL CONTRACTOR APPROVAL DATE

_____/_____/_____
ENGINEER APPROVAL DATE

_____/_____/_____
ARCHITECT APPROVAL DATE

STANDARD FEATURES

- Pre-leveled base
- AcrylX™ applied acrylic surface
- 1 1/8" skirt
- Compliant when properly installed
- Center drain outlet
- Integral front trench drain
- Lifetime Limited Warranty Residential Use/ 30-year Commercial Use
- 12" x 24" subway tile
- Slip resistant, textured bottom [ASTM F-462]
- Code compliant when fully equipped and installed according to guidelines

CONFIGURATION (handed by the seat)

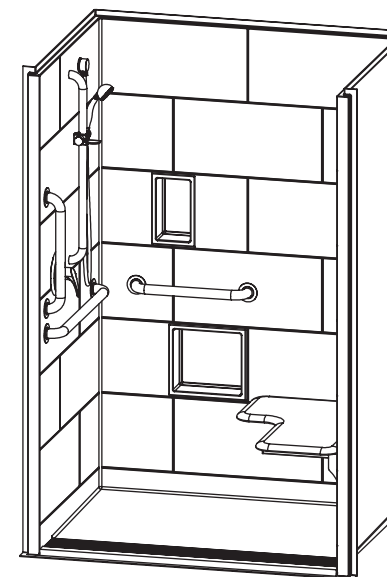
- ☐ Shell reinforced for future accessory installation
 - Seat Wall ☐ LH ☐ RH
- ☐ Fully configured with seat — ANSI Type B
 - Seat Location ☐ LH ☐ RH
 - Includes one 28" x 1 1/2" diameter stainless grab bar located on the side wall; One 18" x 1 1/2" diameter stainless grab bar located on the back wall; white cushioned, L-shaped fold-up seat; pressure balancing mixing valve; hand-held shower assembly; and stainless steel grate. Grab bar, mixing valve and handheld shower installed opposite seat per ANSI guidelines.

CUSTOM OPTIONS (not avail. if ANSI configuration is selected)

- ☐ L-shaped fold-up seat ☐ LH ☐ RH
- ☐ Cushioned white ☐ Phenolic teak ☐ Phenolic white
- Grab bars:
 - One 28" (side wall) and one 18" (back wall)
 - ☐ Stainless steel (1 1/2" dia.) ☐ LH ☐ RH
 - ☐ Powder-coated white (1 1/4" dia.) ☐ LH ☐ RH
- Fixture Wall ☐ LH ☐ RH ☐ Back wall
- ☐ Hand-held shower assembly with 30" slide bar and 60" hose
- ☐ Pressure balancing mixing valve
- Grate:
 - ☐ Stainless steel
 - ☐ White
 - ☐ Tamper-proof

OPTIONAL ACCESSORIES (available for all models)

- ☐ Large soap dish (12 1/2 W x 3 1/2 D x 1 1/2 H), shipped loose
- ☐ Small soap dish (7 W x 3 1/2 D x 1 1/2 H), shipped loose
- ☐ Curtain rod (Not ANSI compliant)
- ☐ Shower curtain
- ☐ Brass drain
- Colors:
 - Standard ☐ White
 - Upgraded ☐ Biscuit ☐ Bone
 - ☐ Other (contact customer service for custom color options)
- ☐ Additional accessories:



Int. Dim. 48 W x 36 D x 76 3/4 H

Ext. Dim. 54 W x 38 1/8 D x 78 3/4 H

Skirt Ht. 1 1/8 skirt

Packaged Wt. 170 lbs.

Material AcrylX™ applied acrylic

Warranty Lifetime Limited Residential Use/ 30-year Commercial Use*

* See terms and conditions for details

inches

To complete your order, this document must be signed and faxed to the Aquatic Centralized Customer Service Center.

Fax (866) 544-5353 • Phone (800) 945-2726

For pricing of units and additional options, reference the Aquatic Price Book. • Please indicate custom changes on reverse side drawings.

Rev. 03.02.17



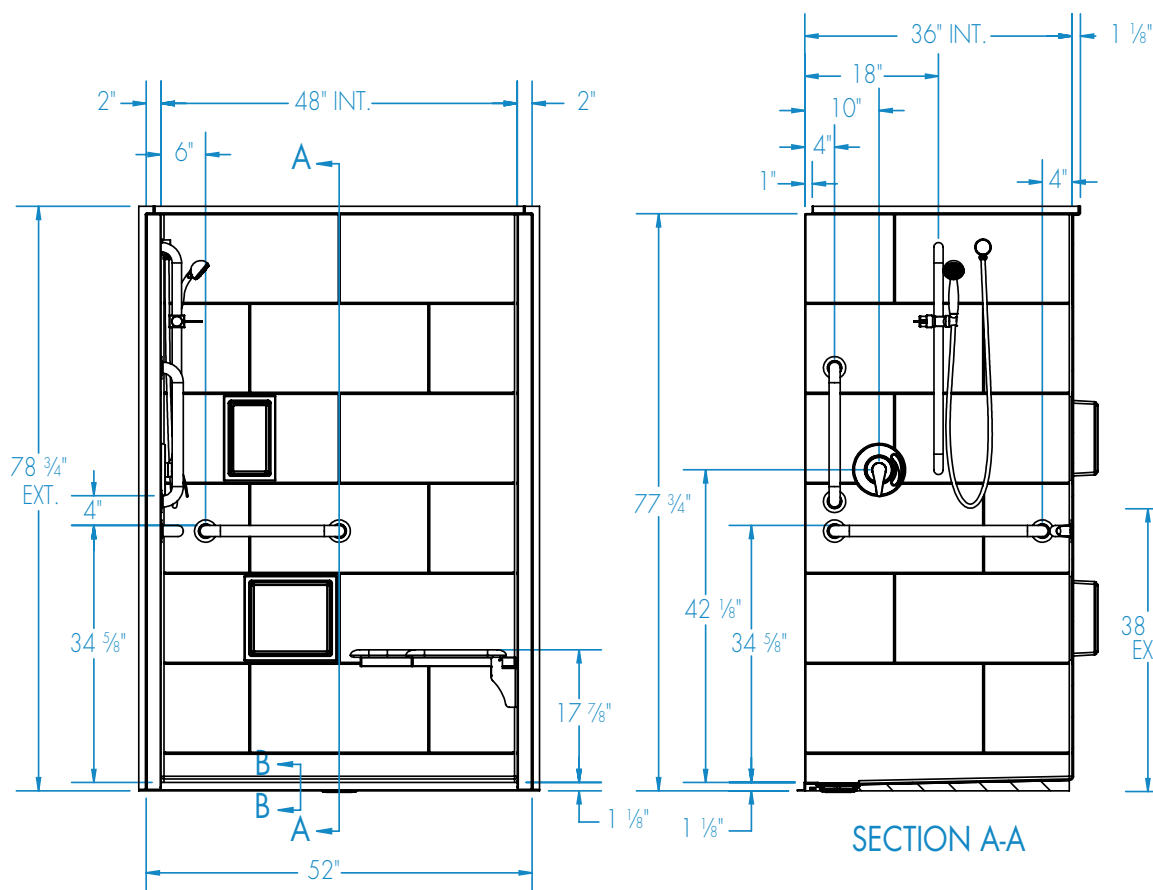
Submittal Sheet

Aquatic products may be specified as Lasco Bathware.

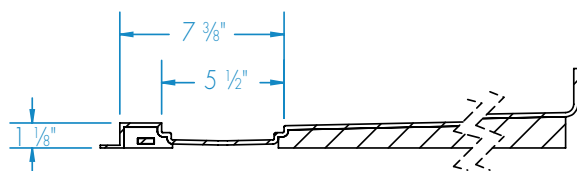
14836BFSCCTR

ANSI Type B Compliant with Seat

Please indicate changes needed.

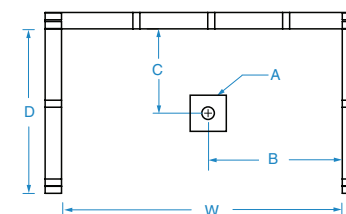


SECTION A-A



SECTION B-B

Trench grate, Included, not shown

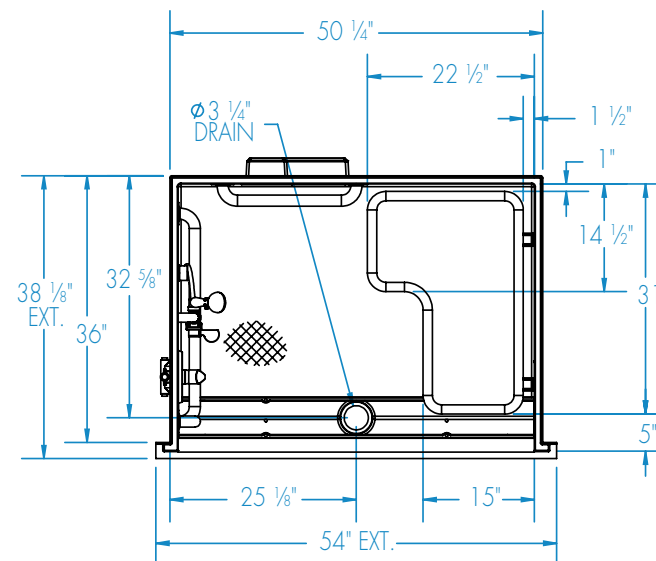


FRAMING DIMENSIONS inches (mm)

Type	D Depth	W Width	A	B	C
Alcove	36	50 1/4	Box Out	25 1/8	32 5/8

Installation Options:

1. Install in a recessed pit for rough-in floor installation.
2. Build sub-floor to level finished floor with top of shower threshold.



Shell tolerance: +0, - 3/8" All other tolerances: ± 1"

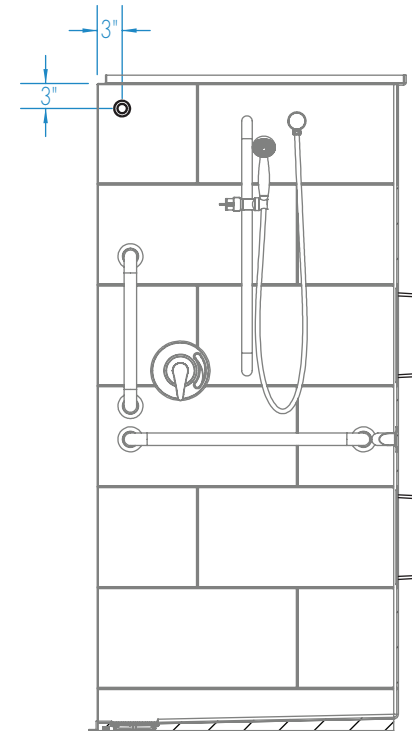
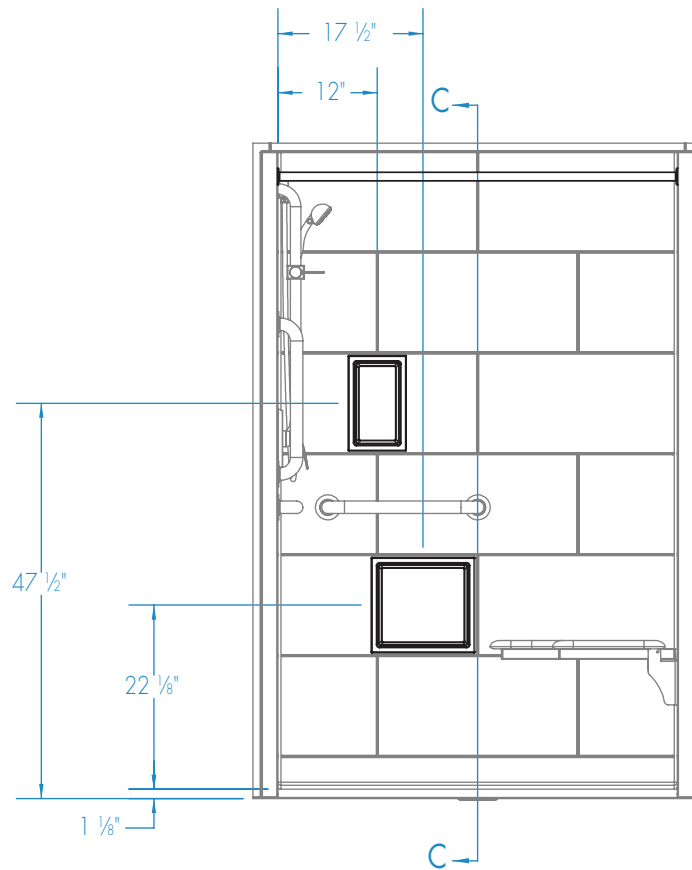


Submittal Sheet

Aquatic products may be specified as Lasco Bathware.

14836BFSCCTR ANSI Type B Compliant with Seat
Please indicate changes needed.

Curtain Rod and Soap Dish Locations (Standard Valve Configuration)



SECTION C-C

Shell tolerance: $+0, -\frac{3}{16}"$ All other tolerances: $\pm 1"$