



Submittal Sheet

Aquatic products may be specified as Lasco Bathware.

16030BFSBTTR

ADA compliant without Seat

CUSTOMER: _____

JOB NAME: _____

PO #: _____ QUOTE #: _____

DATE: _____ QUANTITY: _____

SHIP TO: _____

_____/_____/_____
PLUMBING CONTRACTOR APPROVAL DATE

_____/_____/_____
GENERAL CONTRACTOR APPROVAL DATE

_____/_____/_____
ENGINEER APPROVAL DATE

_____/_____/_____
ARCHITECT APPROVAL DATE

STANDARD FEATURES

- Pre-leveled base
- AcrylX™ applied acrylic surface
- ½" skirt
- ½" COL exterior threshold
- Compliant when properly installed
- Center drain outlet
- Integral front trench drain
- Lifetime Limited Warranty Residential Use/ 30-year Commercial Use
- 12" x 24" subway tile
- Slip resistant, textured bottom [ASTM F-462]
- Code compliant when fully equipped and installed according to guidelines

CONFIGURATION (handed by fixture wall)

- ☐ Shell reinforced for future accessory installation
 - Fixture wall ☐ LH ☐ RH ☐ Back wall
 - ☐ Optional vertical bar reinforcement (entry wall)
 - ☐ LH ☐ RH ☐ Both
- ☐ Fully configured — ADA
 - Seat Location ☐ LH ☐ RH
 - Includes two 20" x 1½" diameter stainless grab bar located on the side walls;
 - One 48" x 1½" diameter stainless grab bar located on the back wall; pressure balancing mixing valve; hand-held shower assembly; and stainless steel grate per ADA guidelines.

CUSTOM OPTIONS (not available if ADA configuration is selected)

Grab bars:

- Two 20" (side walls) and one 48" (back wall)
- ☐ Stainless steel (1½" dia.)
- ☐ Powder-coated white (1¼" dia.)

Fixture Wall ☐ LH ☐ RH ☐ Back wall

- ☐ Hand-held shower assembly with 30" slide bar and 60" hose
- ☐ Pressure balancing mixing valve

Grate:

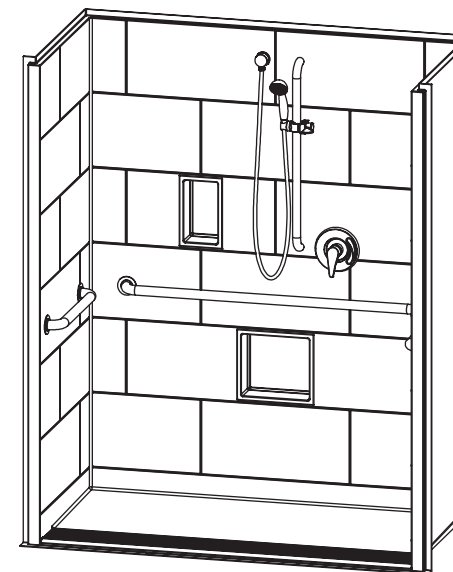
- ☐ Stainless steel
- ☐ White
- ☐ Tamper-proof

OPTIONAL ACCESSORIES (available for all models)

- ☐ Large soap dish (12½ W x 3½ D x 11½ H), shipped loose
- ☐ Small soap dish (7 W x 3½ D x 11½ H), shipped loose
- ☐ Curtain rod (Not ADA compliant)
- ☐ Shower curtain
- ☐ Brass drain

Colors:

- Standard ☐ White
- Upgraded ☐ Biscuit ☐ Bone
- ☐ Other (contact customer service for custom color options)
- ☐ Additional accessories:



Int. Dim. 60 W x 30 D x 76 ¾ H

Ext. Dim. 66 W x 32 ½ D x 78 ¾ H

Skirt Ht. ½ skirt, ½ COL exterior threshold

Packaged Wt. 210 lbs.

Material AcrylX™ applied acrylic

Warranty Lifetime Limited Residential Use/ 30-year Commercial Use*

* See terms and conditions for details

inches

To complete your order, this document must be signed and faxed to the Aquatic Centralized Customer Service Center.

Fax (866) 544-5353 • Phone (800) 945-2726

For pricing of units and additional options, reference the Aquatic Price Book. • Please indicate custom changes on reverse side drawings.

Rev. 03.02.17

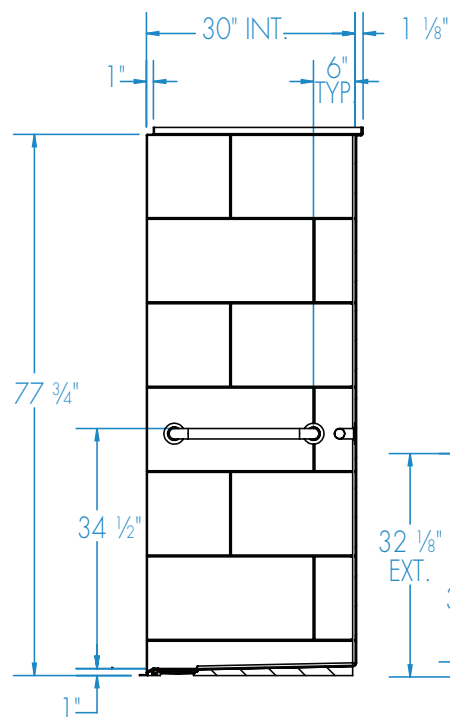
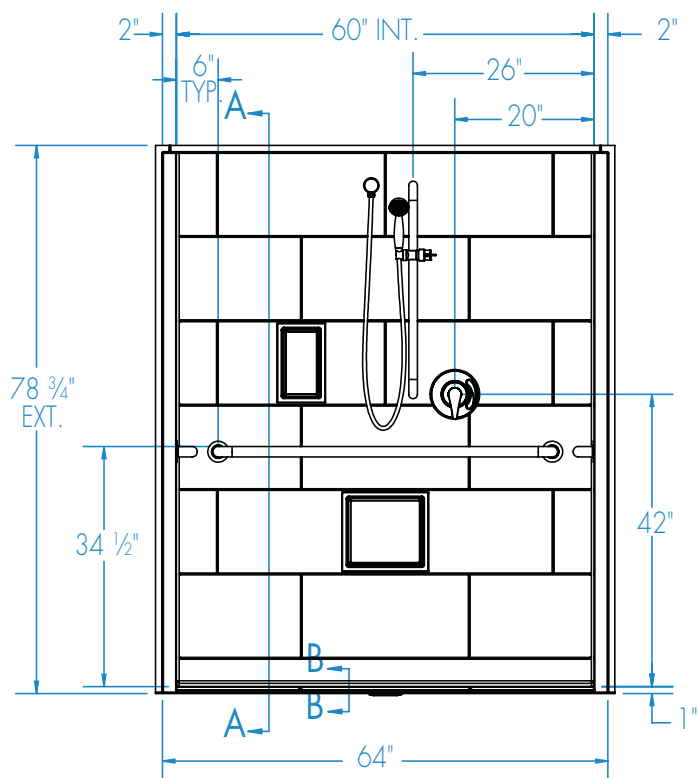


Submittal Sheet

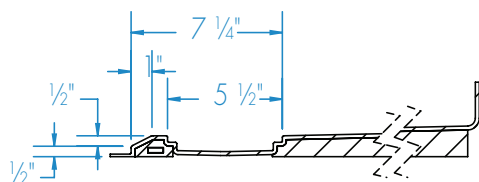
Aquatic products may be specified as Lasco Bathware.

16030BFSBTTR ADA compliant without Seat

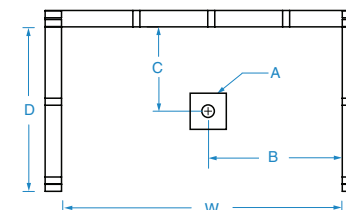
Please indicate changes needed.



SECTION A-A



SECTION B-B
Trench grate (Included) not shown

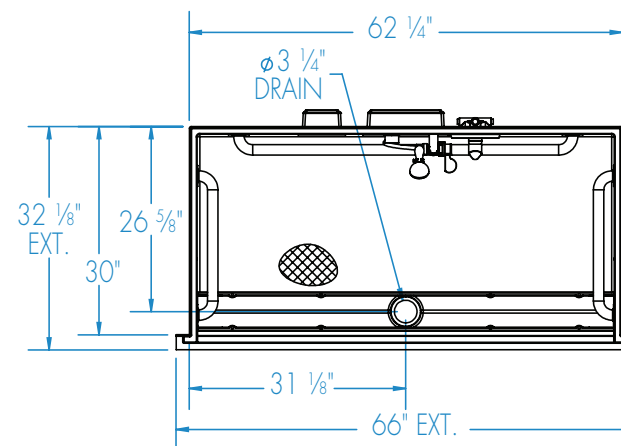


FRAMING DIMENSIONS inches (mm)

| Type | D Depth | W Width | A | B | C |
|--------|------------|------------|---------|--------|--------|
| Alcove | 30 | 62 1/4 | Box Out | 31 1/8 | 26 5/8 |

Installation Options:

1. Install in a recessed pit for rough-in floor installation.
2. Build sub-floor to level finished floor with top of shower threshold.



ADA compliant when fully equipped and installed according to guidelines.

Shell tolerance: +0, - 3/8" All other tolerances: ± 1"

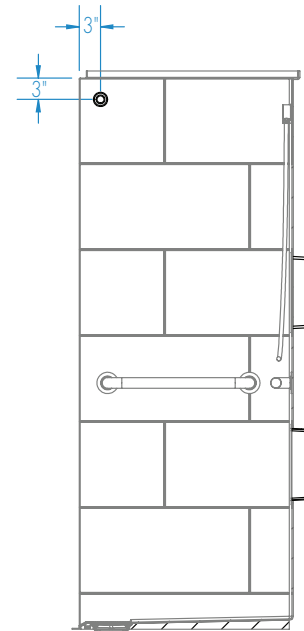
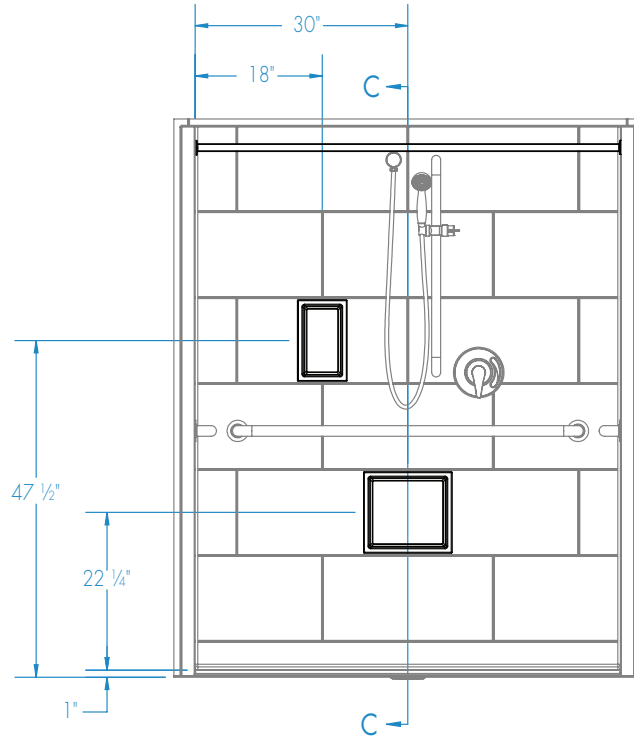


Submittal Sheet

Aquatic products may be specified as Lasco Bathware.

16030BFSBTTR ADA compliant without Seat
Please indicate changes needed.

Curtain Rod and Soap Dish Locations (Standard Valve Configuration)



SECTION C-C

Shell tolerance: +0, - 3/8" All other tolerances: ± 1"