



Submittal Sheet

Aquatic products may be specified as Lasco Bathware.

16030BFSBTTR

ADA/ANSI compliant with Seat

CUSTOMER: _____

JOB NAME: _____

PO #: _____ QUOTE #: _____

DATE: _____ QUANTITY: _____

SHIP TO: _____

_____/_____/_____
PLUMBING CONTRACTOR APPROVAL DATE

_____/_____/_____
GENERAL CONTRACTOR APPROVAL DATE

_____/_____/_____
ENGINEER APPROVAL DATE

_____/_____/_____
ARCHITECT APPROVAL DATE

STANDARD FEATURES

- Pre-leveled base
- AcrylX™ applied acrylic surface
- ½" skirt
- ½" COL exterior threshold
- Compliant when properly installed
- Center drain outlet
- Integral front trench drain
- Lifetime Limited Warranty Residential Use/ 30-year Commercial Use
- 12" x 24" subway tile
- Slip resistant, textured bottom [ASTM F-462]
- Code compliant when fully equipped and installed according to guidelines

CONFIGURATION (handed by seat location)

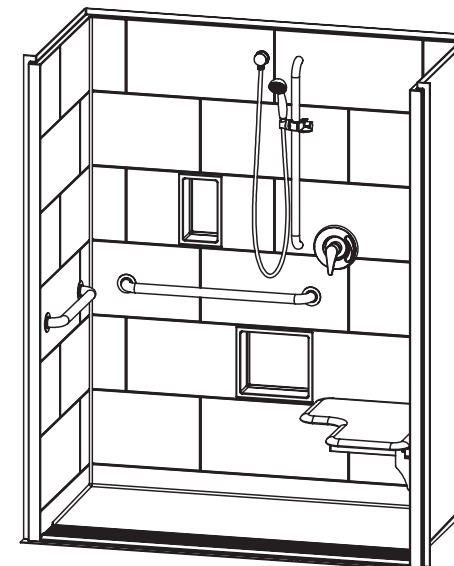
- ☐ Shell reinforced for future accessory installation
Seat Wall ☐ LH ☐ RH
☐ Optional vertical bar reinforcement (entry wall)
☐ LH ☐ RH ☐ Both
- ☐ Fully configured — ADA/ANSI
Seat Location ☐ LH ☐ RH
Includes one 20" x 1½" diameter stainless grab bar located on the side wall; One 30" x 1½" diameter stainless grab bar located on the back wall; white cushioned, L-shaped fold-up seat; pressure balancing mixing valve; hand-held shower assembly; and stainless steel grate. Grab bar, mixing valve and handheld shower installed adjacent to seat per ADA/ANSI guidelines.

CUSTOM OPTIONS (not avail. if ADA/ANSI configuration is selected)

- ☐ L-shaped fold-up seat ☐ LH ☐ RH
☐ Cushioned white ☐ Phenolic teak ☐ Phenolic white
- Grab bars:
One 20" (side wall) and one 30" (back wall)
☐ Stainless steel (1½" dia.) ☐ LH ☐ RH
☐ Powder-coated white (1¼" dia.) ☐ LH ☐ RH
- Fixture Wall ☐ LH ☐ RH ☐ Back wall
- ☐ Hand-held shower assembly with 30" slide bar and 60" hose
☐ Pressure balancing mixing valve
- Grate:
☐ Stainless steel
☐ White
☐ Tamper-proof

OPTIONAL ACCESSORIES (available for all models)

- ☐ Large soap dish (12½ W x 3½ D x 11½ H), shipped loose
☐ Small soap dish (7 W x 3½ D x 11½ H), shipped loose
☐ Curtain rod (Not ADA/ANSI compliant)
☐ Shower curtain
☐ Brass drain
- Colors:
Standard ☐ White
Upgraded ☐ Biscuit ☐ Bone
☐ Other (contact customer service for custom color options)
- ☐ Additional accessories:



Int. Dim. 60 W x 30 D x 76 ¾ H

Ext. Dim. 66 W x 32 ½ D x 78 ¾ H

Skirt Ht. ½ skirt, ½ COL exterior threshold

Packaged Wt. 210 lbs.

Material AcrylX™ applied acrylic

Warranty Lifetime Limited Residential Use/ 30-year Commercial Use*

* See terms and conditions for details

inches

To complete your order, this document must be signed and faxed to the Aquatic Centralized Customer Service Center.

Fax (866) 544-5353 • Phone (800) 945-2726

For pricing of units and additional options, reference the Aquatic Price Book. • Please indicate custom changes on reverse side drawings.

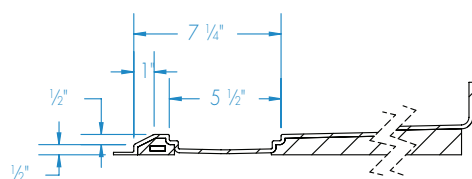
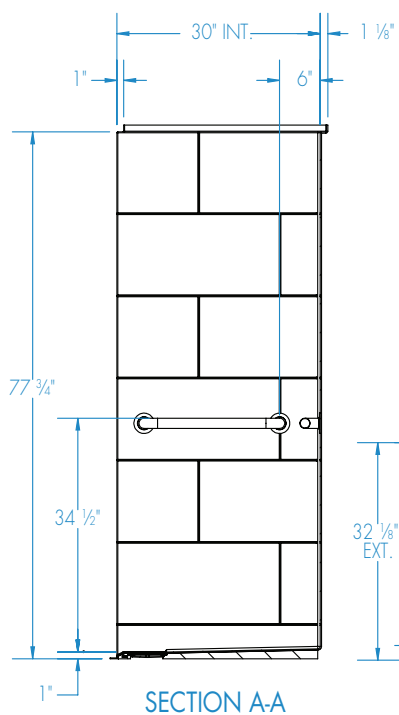
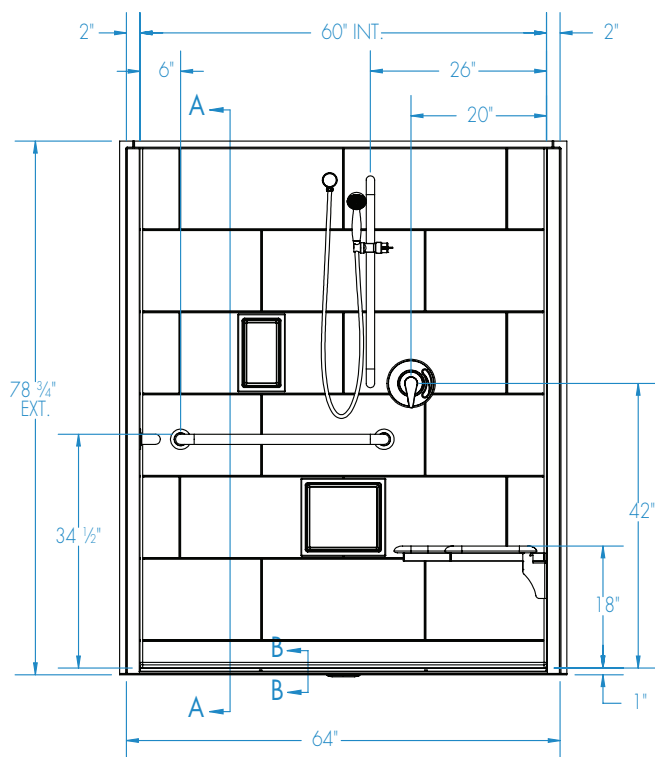
Rev. 03.02.17



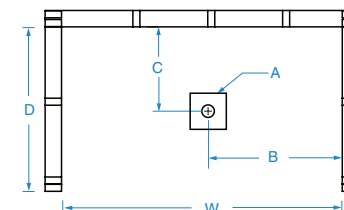
Submittal Sheet

Aquatic products may be specified as Lasco Bathware.

16030BFSBTTR ADA/ANSI compliant with Seat
Please indicate changes needed.



SECTION B-B
Trench grate (Included) not shown

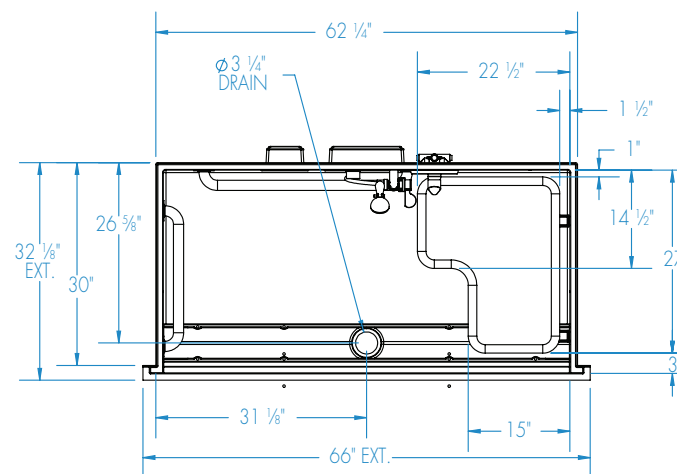


FRAMING DIMENSIONS inches (mm)

Type	D Depth	W Width	A	B	C
Alcove	30	62 1/4	Box Out	31 1/8	26 5/8

Installation Options:

1. Install in a recessed pit for rough-in floor installation.
2. Build sub-floor to level finished floor with top of shower threshold.



ADA/ANSI compliant when fully equipped and installed according to guidelines.

Shell tolerance: +0, - 3/8" All other tolerances: ± 1"

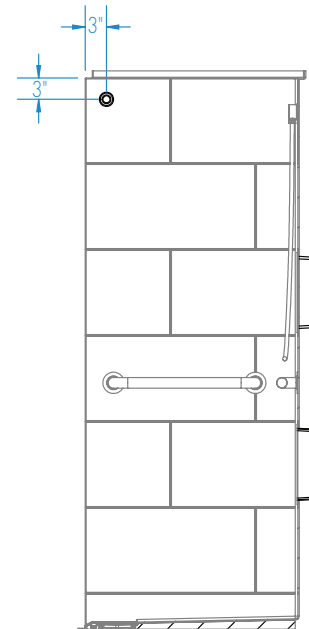
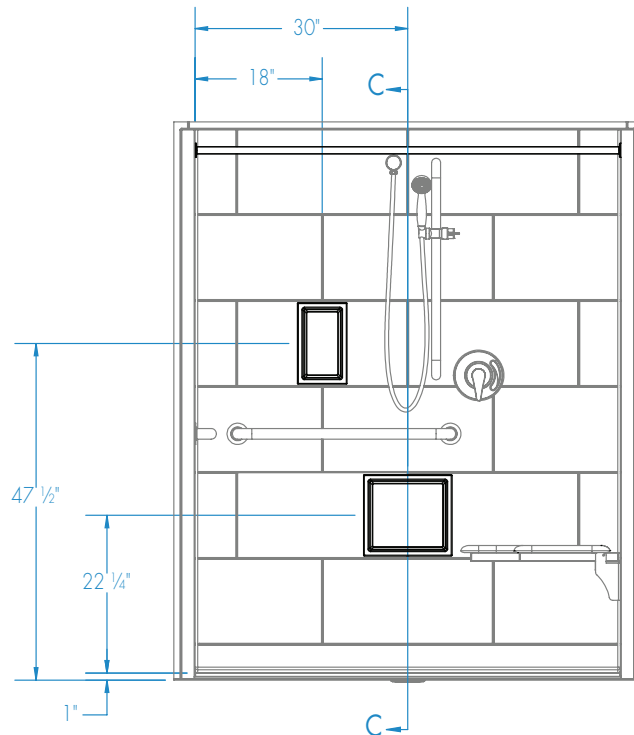


Submittal Sheet

Aquatic products may be specified as Lasco Bathware.

16030BFSBTTR ADA/ANSI compliant with Seat
Please indicate changes needed.

Curtain Rod and Soap Dish Locations (Standard Valve Configuration)



SECTION C-C

Shell tolerance: +0, - 3/8" All other tolerances: ± 1"