



# Submittal Sheet

Aquatic products may be specified as Lasco Bathware.

# 16034BFSBTTR

ADA/ANSI compliant with Seat

CUSTOMER: \_\_\_\_\_

JOB NAME: \_\_\_\_\_

PO #: \_\_\_\_\_ QUOTE #: \_\_\_\_\_

DATE: \_\_\_\_\_ QUANTITY: \_\_\_\_\_

SHIP TO: \_\_\_\_\_

\_\_\_\_\_/\_\_\_\_\_/\_\_\_\_\_  
PLUMBING CONTRACTOR APPROVAL DATE

\_\_\_\_\_/\_\_\_\_\_/\_\_\_\_\_  
GENERAL CONTRACTOR APPROVAL DATE

\_\_\_\_\_/\_\_\_\_\_/\_\_\_\_\_  
ENGINEER APPROVAL DATE

\_\_\_\_\_/\_\_\_\_\_/\_\_\_\_\_  
ARCHITECT APPROVAL DATE

## STANDARD FEATURES

- Pre-veled base
- AcrylX™ applied acrylic surface
- ½" skirt
- ½" COL exterior threshold
- Compliant when properly installed
- Center drain outlet
- Integral front trench drain
- Lifetime Limited Warranty Residential Use/ 30-year Commercial Use
- 12" x 24" subway tile
- Slip resistant, textured bottom [ASTM F-462]
- Code compliant when fully equipped and installed according to guidelines

## CONFIGURATION (handed by seat location)

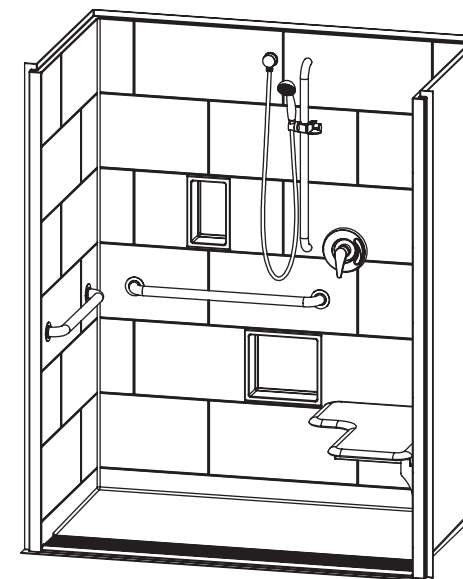
- ☐ Shell reinforced for future accessory installation
  - Seat Wall ☐ LH ☐ RH
  - ☐ Optional vertical bar reinforcement (entry wall)
    - ☐ LH ☐ RH ☐ Both
- ☐ Fully configured — ADA/ANSI
  - Seat Location ☐ LH ☐ RH
  - Includes one 24" x 1½" diameter stainless grab bar located on the side wall;  
One 30" x 1½" diameter stainless grab bar located on the back wall; white cushioned,  
L-shaped fold-up seat; pressure balancing mixing valve; hand-held shower assembly;  
and stainless steel grate. Grab bar, mixing valve and handheld shower installed adjacent  
to seat per ADA/ANSI guidelines.

## CUSTOM OPTIONS (not avail. if ADA/ANSI configuration is selected)

- ☐ L-shaped fold-up seat ☐ LH ☐ RH
- ☐ Cushioned white ☐ Phenolic teak ☐ Phenolic white
- Grab bars:
  - One 24" (side wall) and one 30" (back wall)
    - ☐ Stainless steel (1½" dia.) ☐ LH ☐ RH
    - ☐ Powder-coated white (1¼" dia.) ☐ LH ☐ RH
  - Fixture Wall ☐ LH ☐ RH ☐ Back wall
- ☐ Hand-held shower assembly with 30" slide bar and 60" hose
- ☐ Pressure balancing mixing valve
- Grate:
  - ☐ Stainless steel
  - ☐ White
  - ☐ Tamper-proof

## OPTIONAL ACCESSORIES (available for all models)

- ☐ Large soap dish (12½ W x 3½ D x 11½ H), shipped loose
- ☐ Small soap dish (7 W x 3½ D x 11½ H), shipped loose
- ☐ Curtain rod (Not ADA/ANSI compliant)
- ☐ Shower curtain
- ☐ Brass drain
- ☐ 12" high 3-piece wall extension
- Colors:
  - Standard ☐ White
  - Upgraded ☐ Biscuit ☐ Bone
  - ☐ Other (contact customer service for custom color options)
- ☐ Additional accessories:



Int. Dim. 60 W x 34 D x 76 ¾ H

Ext. Dim. 66 W x 36 ½ D x 78 ¾ H

Skirt Ht. ½ skirt, ½ COL exterior threshold

Packaged Wt. 210 lbs.

Material AcrylX™ applied acrylic

Warranty Lifetime Limited Residential Use/ 30-year Commercial Use\*

\* See terms and conditions for details

inches

To complete your order, this document must be signed and faxed to the Aquatic Centralized Customer Service Center.

**Fax (866) 544-5353 • Phone (800) 945-2726**

For pricing of units and additional options, reference the Aquatic Price Book. • Please indicate custom changes on reverse side drawings.

Rev. 03.02.17



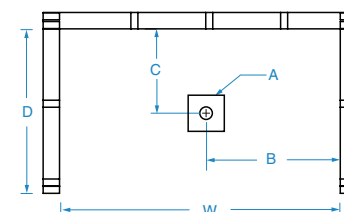
# Submittal Sheet

Aquatic products may be specified as Lasco Bathware.

## 16034BFSBTTR

ADA/ANSI compliant with Seat

Please indicate changes needed.

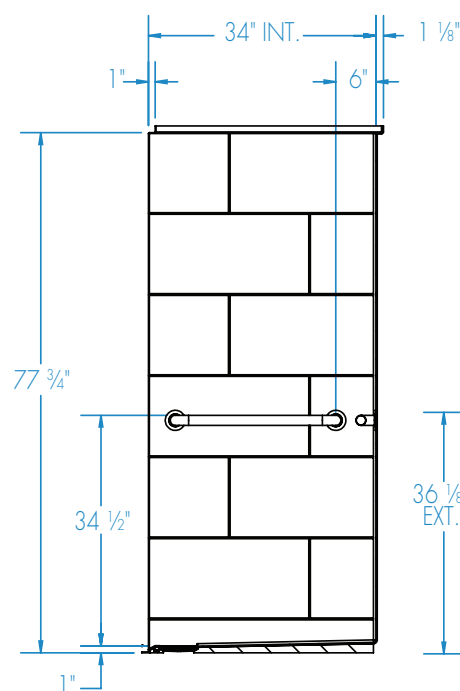
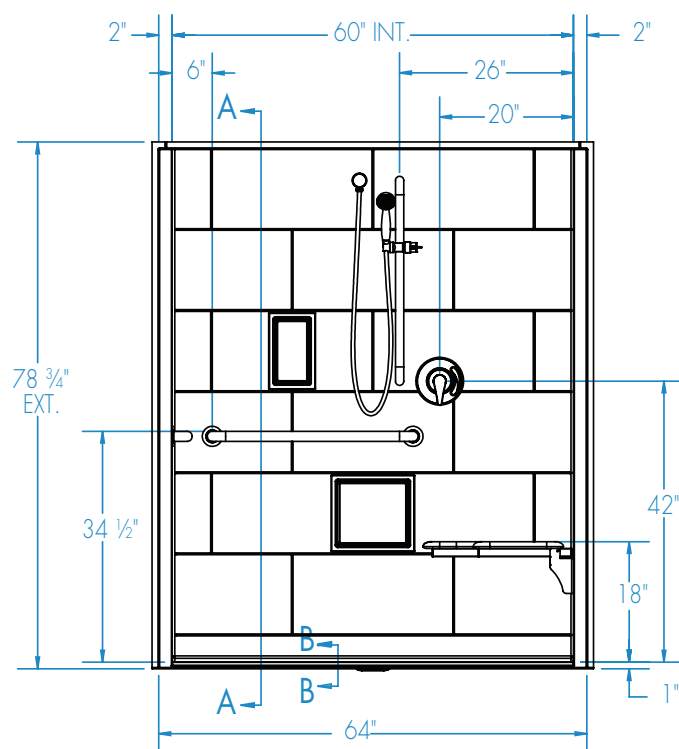


FRAMING DIMENSIONS inches (mm)

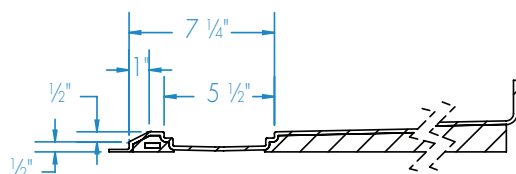
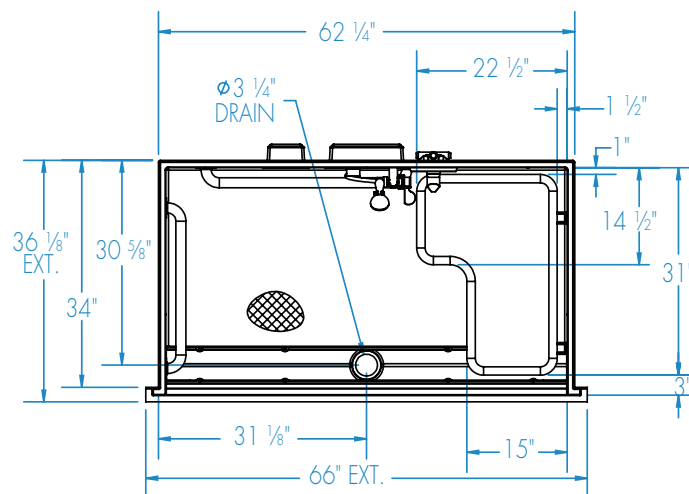
Type	D Depth	W Width	A	B	C
Alcove	34	62 1/4	Box Out	31 1/8	30 5/8

**Installation Options:**

1. Install in a recessed pit for rough-in floor installation.
2. Build sub-floor to level finished floor with top of shower threshold.



SECTION A-A



SECTION B-B  
trench grate (included), not shown

ADA/ANSI compliant when fully equipped and installed according to guidelines.

Shell tolerance: +0, - 3/8" All other tolerances: ± 1"

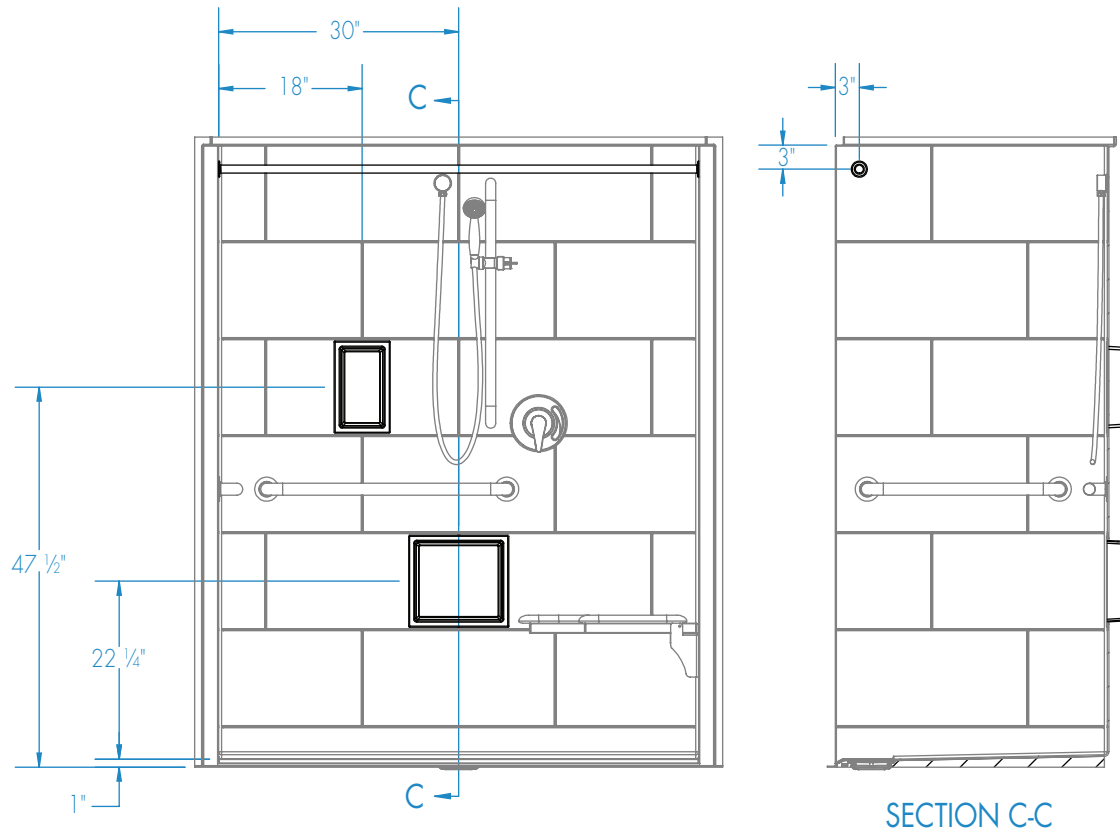


# Submittal Sheet

Aquatic products may be specified as Lasco Bathware.

**16034BFSBTTR** ADA/ANSI compliant with Seat  
Please indicate changes needed.

## Curtain Rod and Soap Dish Locations (Standard Valve Configuration)



Shell tolerance: +0, - 3/8\"

FAX TO THE AQUATIC CENTRALIZED CUSTOMER SERVICE CENTER (866) 544-5353

Rev. 03.02.17