



# Submittal Sheet

Aquatic products may be specified as Lasco Bathware.

## 16036BFSCCTR

ADA Compliant without Seat

CUSTOMER: \_\_\_\_\_

JOB NAME: \_\_\_\_\_

PO #: \_\_\_\_\_ QUOTE #: \_\_\_\_\_

DATE: \_\_\_\_\_ QUANTITY: \_\_\_\_\_

SHIP TO: \_\_\_\_\_

\_\_\_\_\_/\_\_\_\_\_/\_\_\_\_\_  
PLUMBING CONTRACTOR APPROVAL DATE

\_\_\_\_\_/\_\_\_\_\_/\_\_\_\_\_  
GENERAL CONTRACTOR APPROVAL DATE

\_\_\_\_\_/\_\_\_\_\_/\_\_\_\_\_  
ENGINEER APPROVAL DATE

\_\_\_\_\_/\_\_\_\_\_/\_\_\_\_\_  
ARCHITECT APPROVAL DATE

### STANDARD FEATURES

- Pre-leveled base
- AcrylX™ applied acrylic surface
- 1 1/8" skirt
- Compliant when properly installed
- Center drain outlet
- Integral front trench drain
- Lifetime Limited Warranty Residential Use/ 30-year Commercial Use
- 12" x 24" subway tile
- Slip resistant, textured bottom [ASTM F-462]
- Code compliant when fully equipped and installed according to guidelines

### CONFIGURATION (handed by fixture wall)

- ☐ Shell reinforced for future accessory installation
    - Fixture wall ☐ LH ☐ RH ☐ Back wall
    - ☐ Optional vertical bar reinforcement (entry wall)
      - ☐ LH ☐ RH ☐ Both
  - ☐ Fully configured — ADA
    - ☐ Fully configured without seat — ADA
    - Seat Location ☐ LH ☐ RH
- Includes two 28" x 1 1/2" diameter stainless grab bar located on the side walls;  
One 48" x 1 1/2" diameter stainless grab bar located on the back wall; pressure  
balancing mixing valve; hand-held shower assembly; and stainless steel grate per  
ADA guidelines.

### CUSTOM OPTIONS (not available if ADA configuration is selected)

Grab bars:

Two 28" (side walls) and one 48" (back wall)

- ☐ Stainless steel (1 1/2" dia.)
- ☐ Powder-coated white (1 1/4" dia.)

Fixture wall ☐ LH ☐ RH ☐ Back wall

- ☐ Hand-held shower assembly with 30" slide bar and 60" hose
- ☐ Pressure balancing mixing valve

Grate:

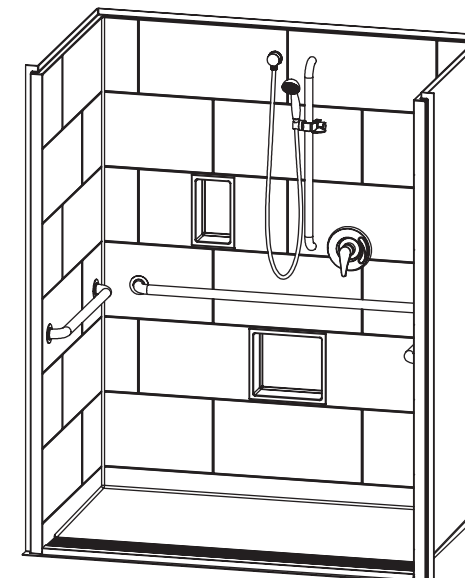
- ☐ Stainless steel
- ☐ White
- ☐ Tamper-proof

### OPTIONAL ACCESSORIES (available for all models)

- ☐ Large soap dish (12 1/2" W x 3 1/2" D x 1 1/2" H), shipped loose
- ☐ Small soap dish (7" W x 3 1/2" D x 1 1/2" H), shipped loose
- ☐ Curtain rod (Not ADA compliant)
- ☐ Shower curtain
- ☐ Brass drain

Colors:

- Standard ☐ White
- Upgraded ☐ Biscuit ☐ Bone
- ☐ Other (contact customer service for custom color options)
- ☐ Additional accessories: \_\_\_\_\_



Int. Dim. 60 W x 36 D x 76 3/4 H

Ext. Dim. 66 W x 38 1/8 D x 78 3/4 H

Skirt Ht. 1 1/8 skirt, 1/2 COL exterior threshold

Packaged Wt. 210 lbs.

Material AcrylX™ applied acrylic

Warranty Lifetime Limited Residential Use/ 30-year Commercial Use\*

\* See terms and conditions for details

inches

To complete your order, this document must be signed and faxed to the Aquatic Centralized Customer Service Center.

**Fax (866) 544-5353 • Phone (800) 945-2726**

For pricing of units and additional options, reference the Aquatic Price Book. • Please indicate custom changes on reverse side drawings.

Rev. 03.02.17

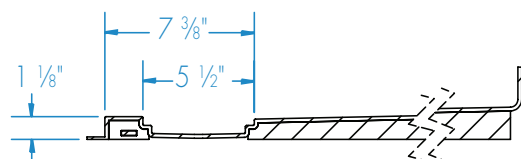
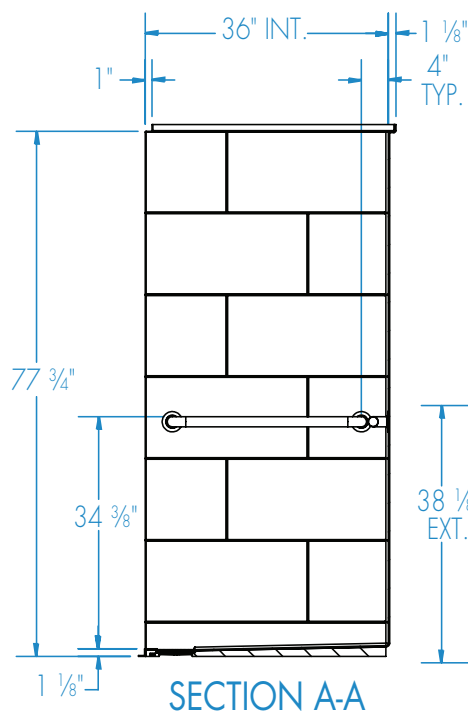
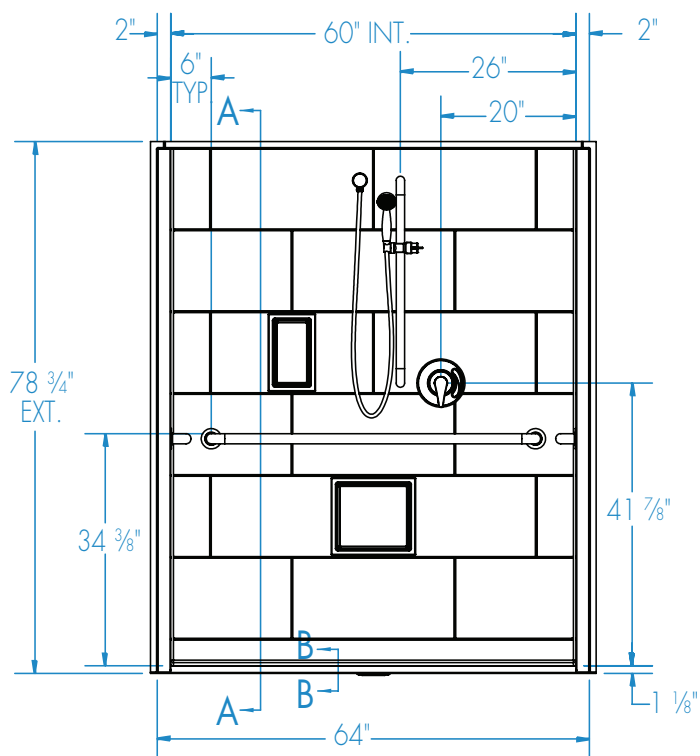


# Submittal Sheet

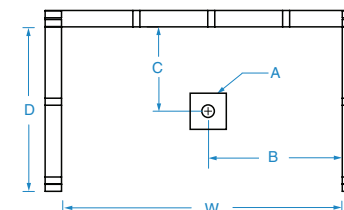
Aquatic products may be specified as Lasco Bathware.

## 16036BFSCCTR ADA Compliant without Seat

Please indicate changes needed.



SECTION B-B  
Trench grate (Included) not shown

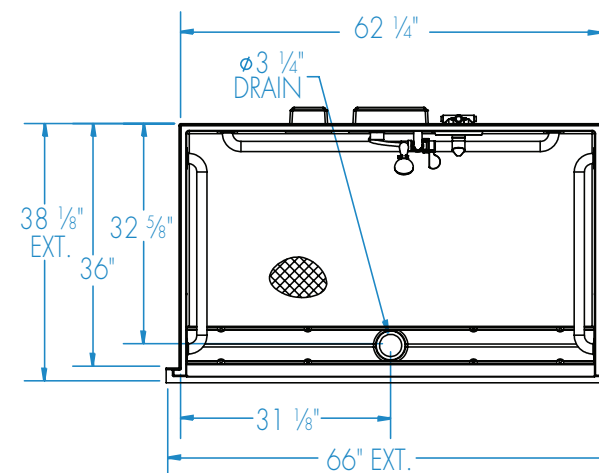


FRAMING DIMENSIONS inches (mm)

Type	D Depth	W Width	A	B	C
Alcove	36	62 1/4	Box Out	31 1/8	32 5/8

### Installation Options:

1. Install in a recessed pit for rough-in floor installation.
2. Build sub-floor to level finished floor with top of shower threshold.



ADA/ANSI compliant when fully equipped and installed according to guidelines.

Shell tolerance: +0, - 3/8" All other tolerances: ± 1"

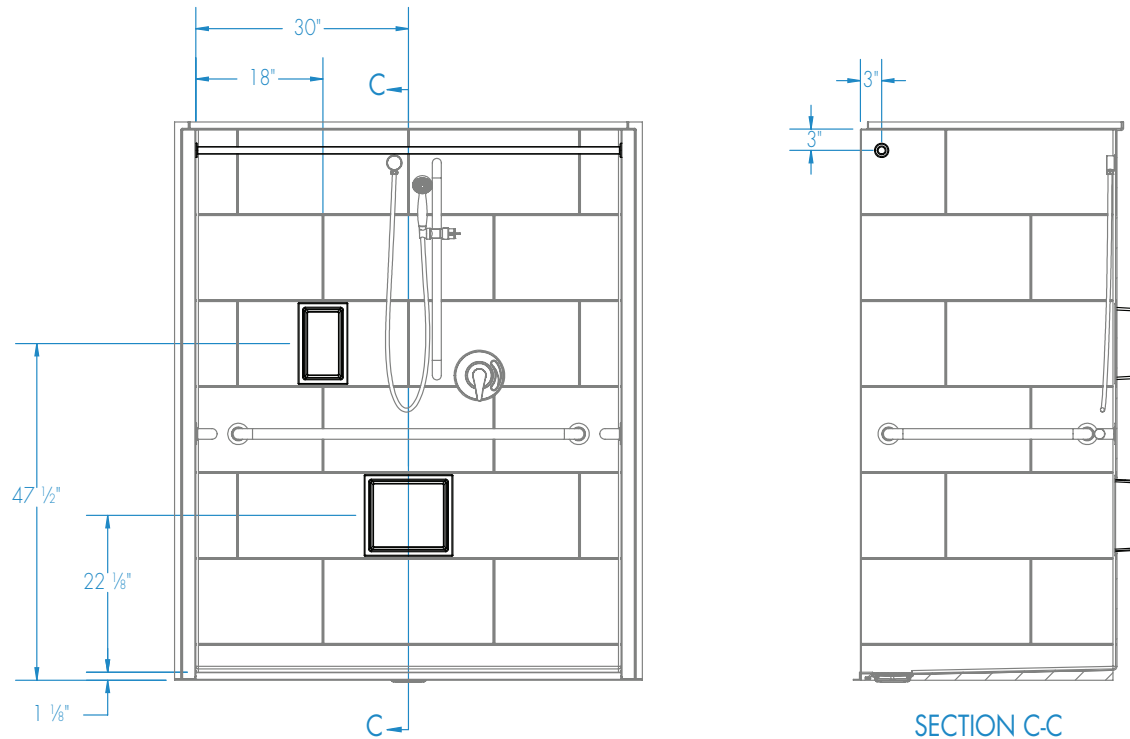


# Submittal Sheet

Aquatic products may be specified as Lasco Bathware.

**16036BFSC TTR** ADA Compliant without Seat  
Please indicate changes needed.

## Curtain Rod and Soap Dish Locations (Standard Valve Configuration)



Shell tolerance: +0, - 3/8\"

FAX TO THE AQUATIC CENTRALIZED CUSTOMER SERVICE CENTER (866) 544-5353

Rev. 03.02.17