

CUSTOMER: _____

JOB NAME: _____

PO #: _____

QUOTE #: _____ QUANTITY: _____

SHIP TO: _____

_____/_____/_____
PLUMBING CONTRACTOR APPROVAL DATE

_____/_____/_____
GENERAL CONTRACTOR APPROVAL DATE

_____/_____/_____
ENGINEER APPROVAL DATE

_____/_____/_____
ARCHITECT APPROVAL DATE

IMPORTANT: ADA compliant showers with NO interior threshold will have water escape onto the bathroom floor. Aquatic highly recommends you take the following precautions:

1. Install only the minimum number of ADA units without an interior threshold required for each job. If possible install Aquatic's accessible models that have a ½ interior threshold to reduce the amount of water that escapes from the shower.
2. When installing units with NO interior threshold, install a FLOOR DRAIN to control the water that escapes onto the bathroom floor.
3. Depending on your application, you may choose to install Aquatic's vinyl flexible dam or removable threshold, which helps better retain water within the shower. However, these items may not necessarily meet ADA or other code requirements. Always confirm code compliance with your local building authority.

STANDARD FEATURES

- Code compliant when fully equipped and installed according to guidelines
- Lustrous, durable, easy-to-clean Lucite® cast acrylic
- Integral toiletry shelves
- Integral dome
- LH or RH drain location
- Slip resistant, textured bottom [ASTM F-462]

CONFIGURATION

- ☐ Fully equipped with seat — ANSI
Includes four 24" x 1½" diameter grab bars; one 18" x 1½" Diameter vertical grab bar; tri-fold removable seat pressure balancing mixing valve and hand-held shower assembly per ANSI guidelines

CUSTOM OPTIONS (not available if ANSI configuration is selected)

Fixture Wall ☐ LH ☐ RH

Grab bars:

Four horizontal 24" and one vertical 18"

Stainless steel (1½" dia.) ☐ LH ☐ RH

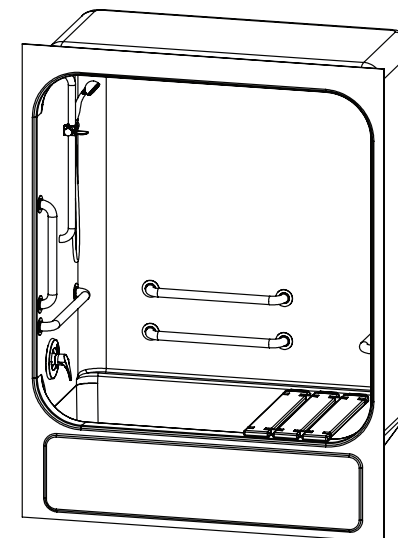
Powder-coated white (1¼" dia.) ☐ LH ☐ RH

- ☐ Tri-fold, plastic removable seat
☐ Teakwood finish fold up seat
☐ Hand-held shower assembly with 30" slide bar and 60" hose
☐ Pressure balancing mixing valve

OPTIONAL ACCESSORIES (available for all models)

- ☐ Soap dish
☐ Curtain rod (Not ANSI compliant)
☐ Shower curtain
☐ Brass drain
- Colors:
Standard ☐ White
Upgraded ☐ Biscuit
☐ Other (contact customer service for custom color options)
☐ Additional accessories

For pricing of units and additional options, reference the Aquatic Price Book.



Int. Dim.	60 W x 32 D x 80 ½ H
Ext. Dim.	65 W x 33 D x 84 H
Skirt Ht.	17 skirt
Packaged Wt.	185 lbs. gross
Material	Premium cast acrylic
Warranty	Acrylic Finished Products — Five Years

inches

To complete your order, this document must be signed and faxed to the Aquatic Centralized Customer Service Center.

Fax (866) 544-5353 • Phone (800) 945-2726

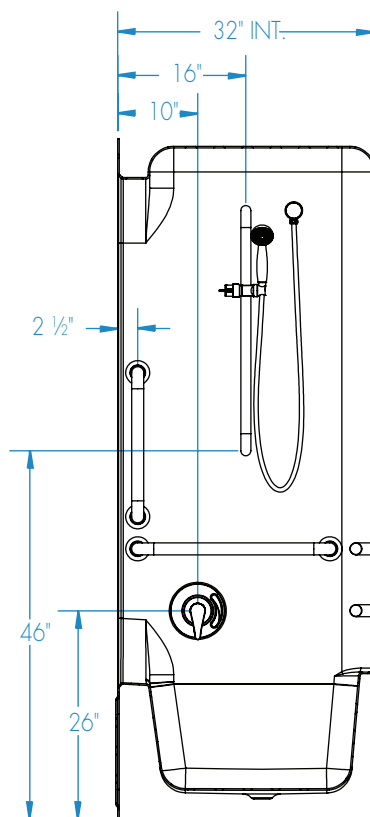
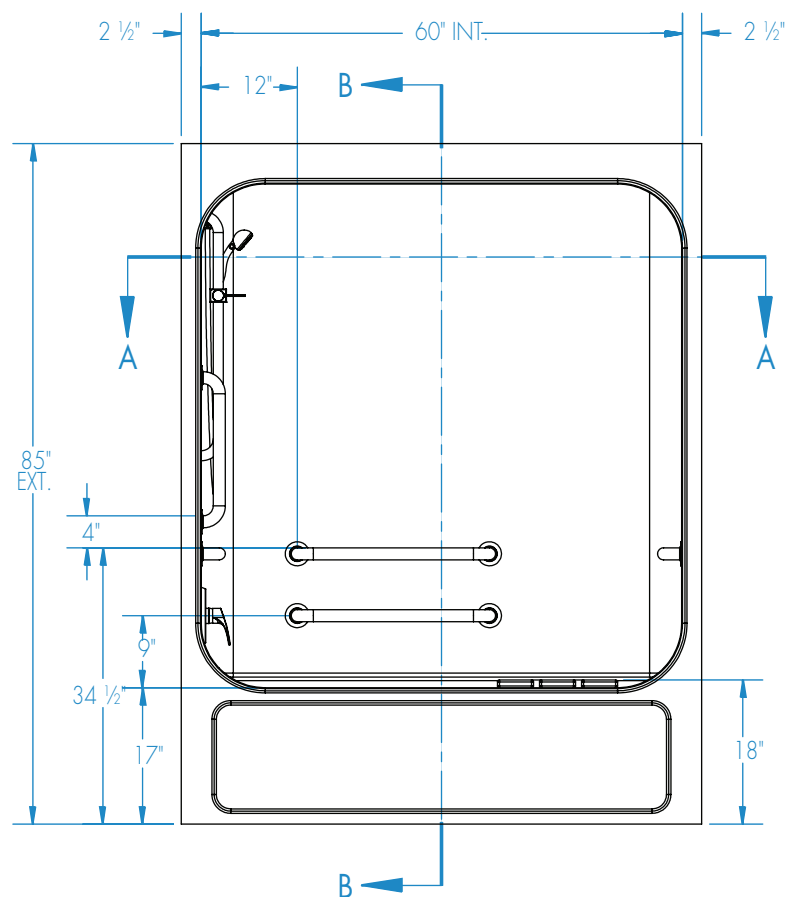


Submittal Sheet

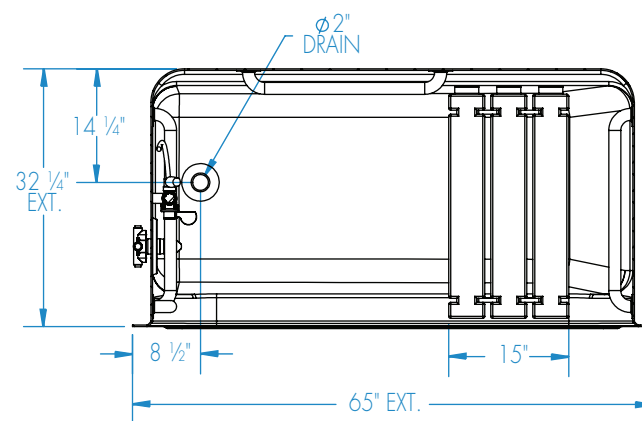
Aquatic products may be specified as Lasco Bathware.

6032ITS ANSI Compliant

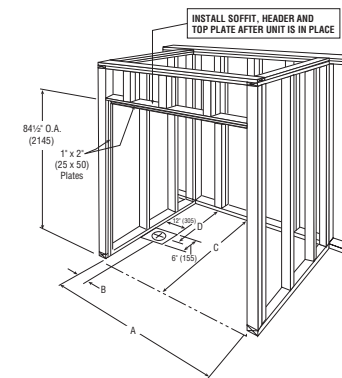
Please indicate changes needed.



SECTION B-B



SECTION A-A



FRAMING DIMENSIONS Inches

A	B	C	D
65 1/8	8 1/2	33	15

Installation Options:

1. Install in a recessed pit for rough-in floor installation.
2. Build sub-floor to level finished floor with top of shower threshold.

Shell tolerance: +0, -3/8" All other tolerances: ±1"



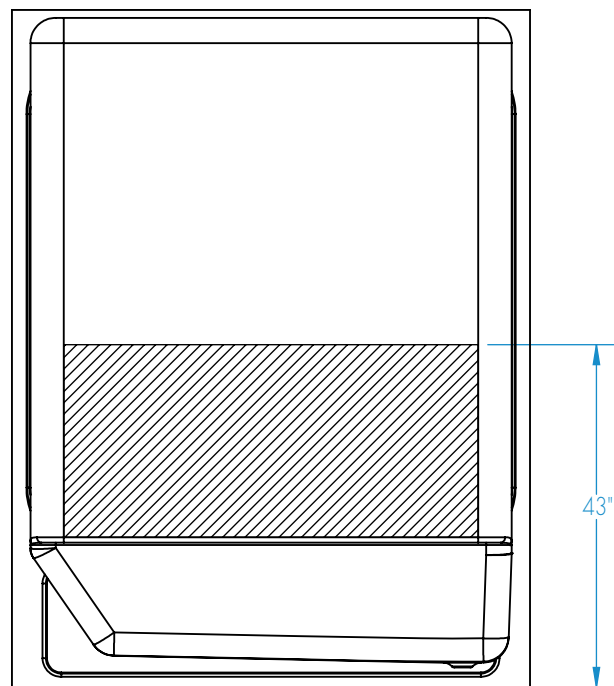
Submittal Sheet

Aquatic products may be specified as Lasco Bathware.

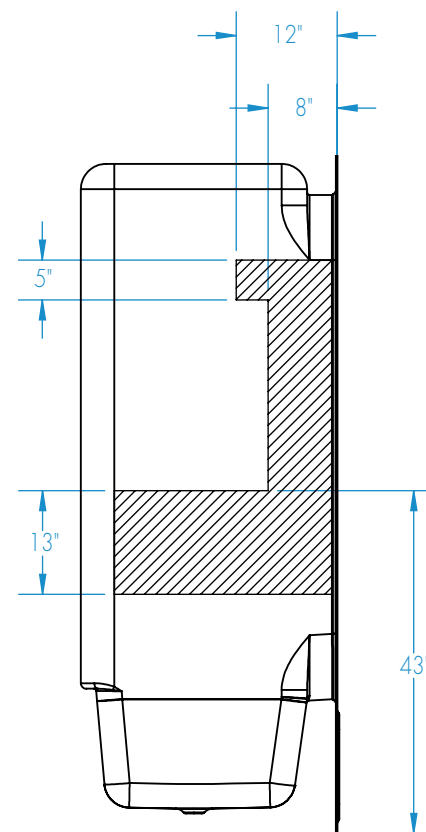
6032ITS ANSI Compliant

Please indicate changes needed.

Reinforcement Locations (Standard)



BACK VIEW



SIDE VIEW (typ.)



= GRAB BAR REINFORCEMENT

Shell tolerance: +0, - $\frac{3}{16}$ " All other tolerances: ± 1 "