

# 16036BFSC TTR – ACCESSIBLE SHOWERS

## With Seat

Interior: 60 x 36 x 76 ¾

Exterior: 66 x 38 ⅛ x 78 ¾

inches

The 16036BFSC TTR roll-in shower features innovative installation design, including an engineered leveled base and improved front threshold with molded integral linear trench drain. A true time and money saver, our pre-leveled base lets you install directly on a **level** floor. And its front threshold is engineered to keep a constant level with the innovative nailing flange.



Shown fully-equipped

## AQUATIC ADVANTAGE

- National distribution
- 6 manufacturing facilities
- Private fleet
- Centralized customer service
- Field support

## COLOR & TRIM OPTIONS

Stock	Upgraded
-------	----------

White

Biscuit  
Bone

\*\*Additional custom colors available.  
(Contact Customer Service)

## FEATURES

- Pre-leveled base
- AcrylX™ applied acrylic surface
- 1 ⅛" skirt
- Barrier free when properly installed
- Smooth large subway tile wall
- Center front drain outlet
- Integral front trench drain
- Lifetime Limited Warranty Residential Use/30-year Commercial Use

## OPTIONS

- Grab bars
- Fold-up seat
- Hand-held shower assembly with slide bar
- Pressure balancing mixing valve
- Large soap dish
- Small soap dish
- Curtain rod and/or shower curtain, shipped loose
- Tamper-proof grate

## CODE COMPLIANCE

- ADA
- FHA
- ICC/ANSI A117.1
- HUD UM73a
- CSA B45.5-11 / IAPMO Z124-2011

\*\*Code compliant when fully equipped and installed according to guidelines.



Aquatic products may be specified as Lasco Bathware.

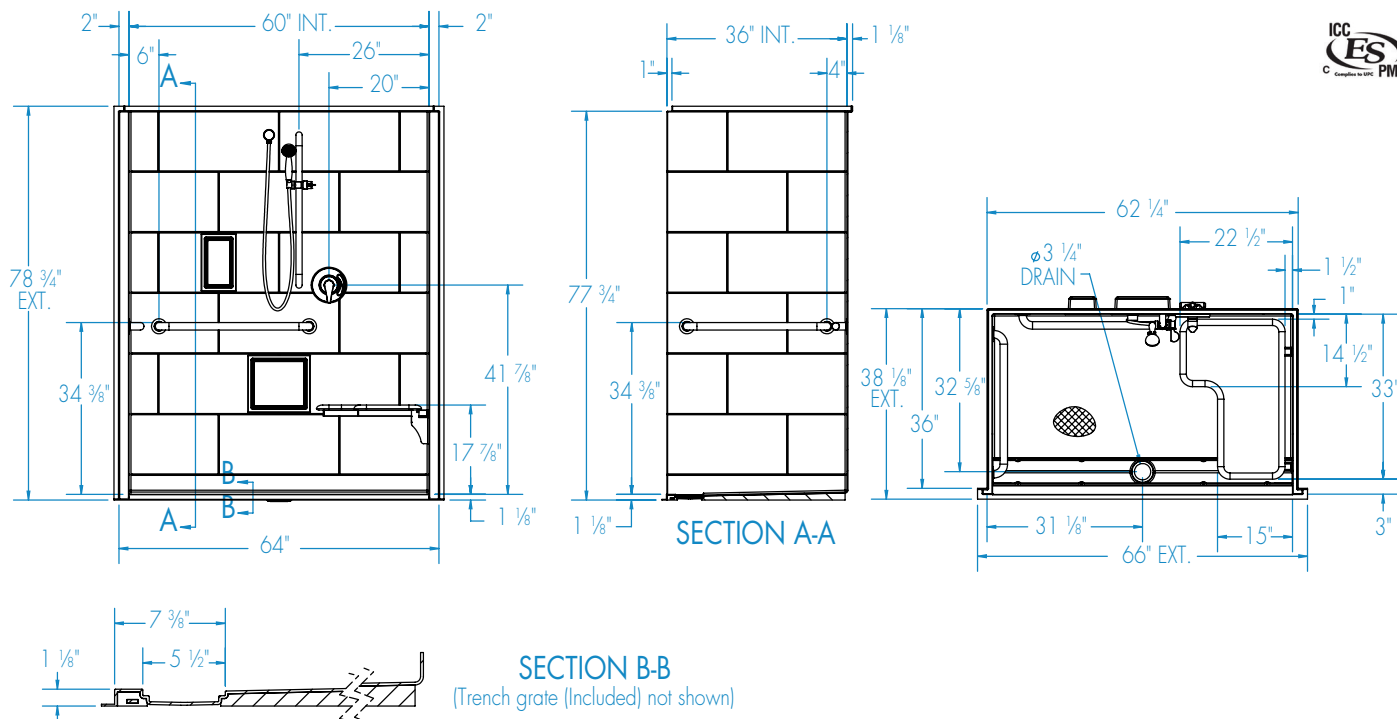


**With Seat**

Interior: 60 x 36 x 76 ¾

Exterior: 66 x 38 ⅛ x 78 ¾

inches



**FEATURES**

Dimensional Tolerance  $\pm \frac{3}{8}$ ". Dimensions needed for site preparation should be measured from the unit. Manufacturer assumes no responsibility for preparatory work.

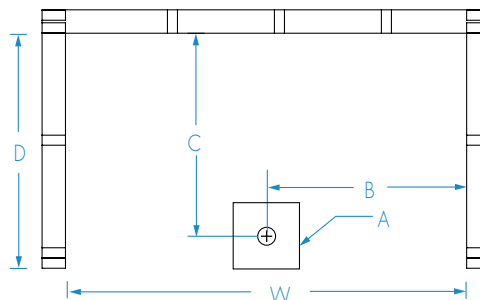
Type and Model #	Material	Wall Finish	Pieces	Drain	Dam/Skirt Height	Net Wt. lbs	Pkg. Wt. lbs
Shower 16036BFSCTTR	AcrylX™ applied acrylic	Smooth tile	1	Center Front	1 ⅛ skirt	200	210

**DIMENSIONS**

Specifications	inches
Width: Ext. / Int.	66 / 60
Depth: Ext. / Int.	38 ⅛ / 36
Height: Ext. / Int.	78 ¾ / 76 ¾
Enclosure Opening:	60
Skirt Height:	1 ⅛
Drain Rough-In (from Back Wall)	32 ⅝
Drain Rough-In (from Side Wall)	31 ⅛

**FRAMING DIMENSIONS** inches

Type	D Depth	W Width	H Height	A	B	C
Alcove	36	62 ¼	-	Box Out	31 ⅛	32 ⅝



**Aquatic products may be specified as Lasco Bathware.**