

# 254027 – EVERYDAY BATHS

54 x 27 1/8 x 15 inches



## FEATURES

- Alcove bath
- Ergonomic backrest
- Integral tiling flange (3T)
- Integral skirt
- Slip-resistant textured bottom
- Left or right hand drain
- AcrylX™ applied acrylic surface
- Lifetime limited warranty

## OPTIONS

- Designer drain, waste & overflow

## AQUATIC ADVANTAGE

- National distribution
- 6 manufacturing facilities
- Private fleet
- Centralized customer service
- Field support

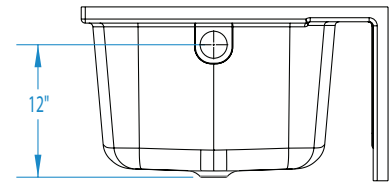
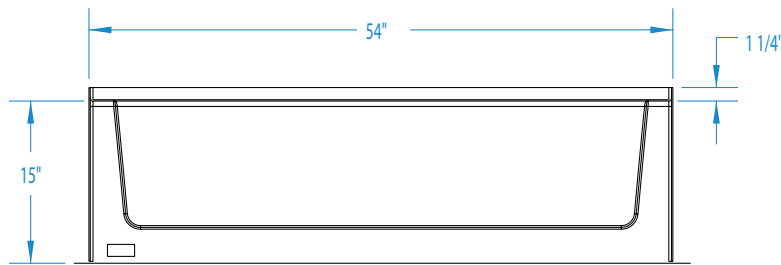
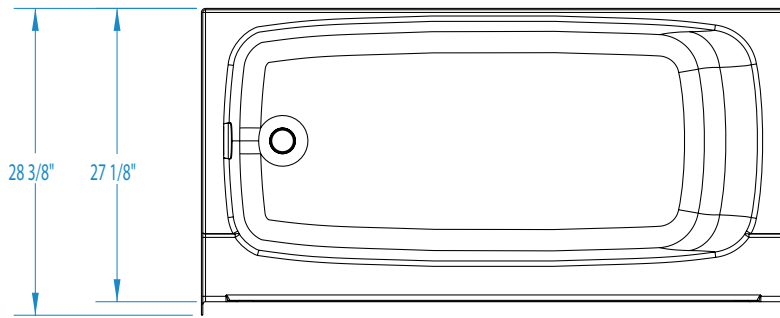
## COLOR OPTIONS

Stock	Upgraded	Premium
White	Almond Linen/Biscuit Bone	Black Mexican Sand Sand Bar Sterling Silver



**254027**

54 x 27 1/8 x 15  
inches



**FEATURES** lbs Dimensional Tolerance  $\pm 3/16$ ". Dimensions needed for site preparation should be measured from the unit. Aquatic assumes no responsibility for preparatory work.

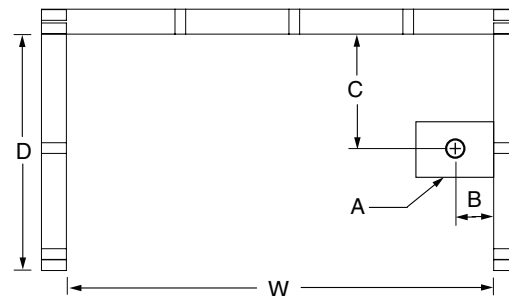
Model #	Material	Jets	Motor	Controls	Drain	Net Wt.	Pkg. Wt.
Soaker #254027	AcrylX™	-	-	-	LH or RH	52	62

**DIMENSIONS**

Specifications	inches
Width: Overall / Net	54
Depth: Overall / Net	28 3/8 / 27 1/8
Height: Overall / Net	16 1/4 / 15
Enclosure Opening	-
Skirt Height	15
Drain Rough-In (from Back Wall)	12 1/4
Drain Rough-In (from Side Wall)	2 1/2
Drain: Diameter / Clearance	2 / 1/2

**FRAMING DIMENSIONS** inches

Type	D Depth	W Width	H Height	A	B	C
Alcove	28 3/8	54 1/8		Box Out	2 1/2	12 1/4



**SUMP DATA**

Top of Drain to Bottom of Overflow	Capacity to Overflow gal	Min. Operating Capacity gal	WIDTH @ centerline		DEPTH @ centerline	
			Top	Bottom	Top	Bottom
10	40	-	49	43	22 1/2	20 1/4