

6030CTSM – A² COMPOSITE TUB/SHOWER

inches (mm)

60 x 30 x 79 (1525 x 760 x 2005) • Fax on Demand #1369

A² COMPOSITE

Lightweight and durable, our A² Composite is an engineered compound of resin, glass and special fillers formed into sheets. These sheets are then placed under high pressure and heat to liquify the compound, allowing it to flow and take the shape of almost any form imaginable. The results are simple, stylish and a snap to install.



FEATURES

- Above Floor Rough (AFR)
- Durable high gloss finish
- Smooth wall, 4 piece molded sectionals
- Pre-Levelled base
- Caulkless Installation
- Leakproof right angle joint flanges
- Easy Wedge & Lock Installation
- Multiple integral soap shelves
- Left, right drain
- Slip resistant, textured bottom
- Available in White and Biscuit
- 15 year residential limited warranty

AQUATIC ADVANTAGE

- National distribution
- 6 manufacturing facilities
- Private fleet
- Centralized customer service
- Field support
- 24-hour fax-on-demand

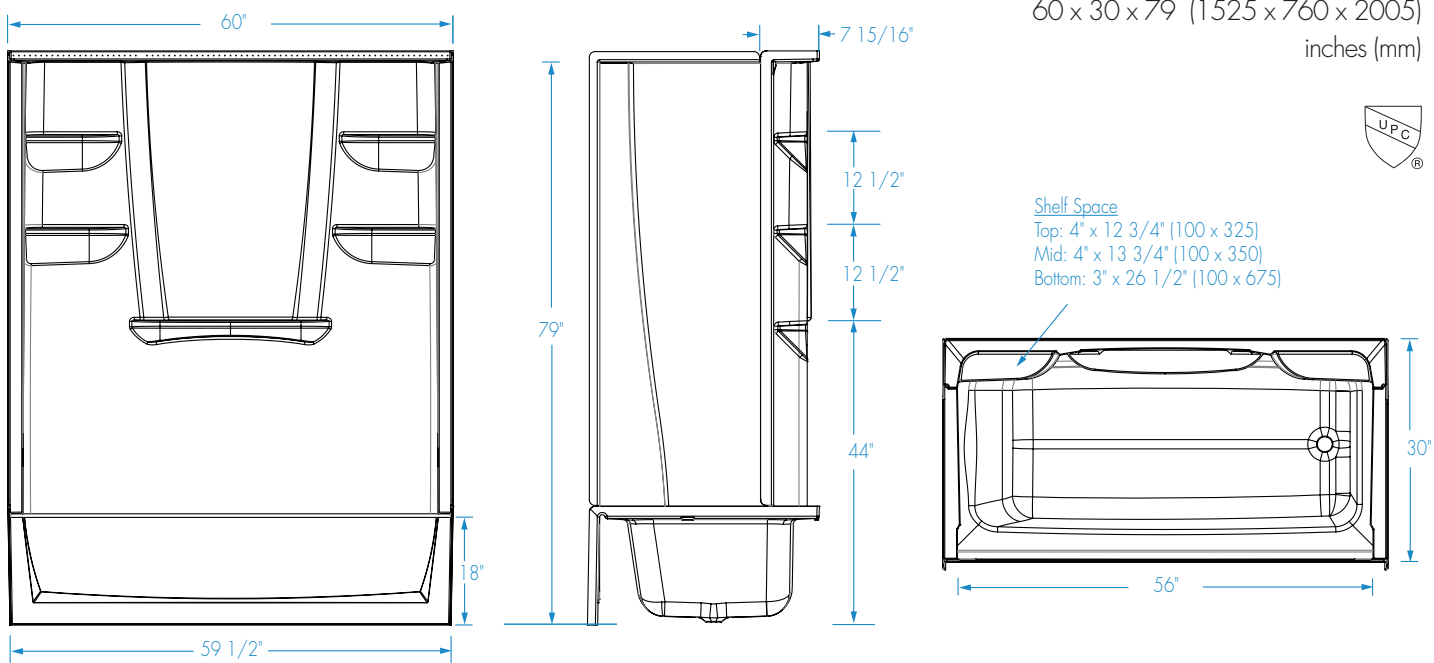


AQUATIC
The bath people



6030CTSM

60 x 30 x 79 (1525 x 760 x 2005)
inches (mm)



FEATURES lbs (kg) Dimensional Tolerance $\pm \frac{3}{16}$ ". Dimensions needed for site preparation should be measured from the unit. Aquatic assumes no responsibility for preparatory work.

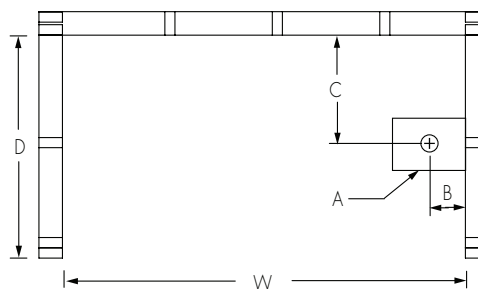
| Model # | Material | Jets | Motor | Controls | Drain | Net Wt. | Pkg. Wt. |
|----------------------|-----------|------|-------|----------|----------|----------|----------|
| Tub-Shower #6030CTSM | Composite | - | - | - | LH or RH | 128 (58) | 138 (63) |

DIMENSIONS

| Specifications | inches (mm) |
|---------------------------------|---------------------------|
| Width: Overall / Net | 60 (1525) |
| Depth: Overall / Net | 31 1/4 (795) / 30 (760) |
| Height: Overall / Net | 80 3/8 (2040) / 79 (2005) |
| Enclosure Opening | 56 3/4 (1520) |
| Skirt Height | 18 (455) |
| Drain Rough-In (from Back Wall) | 14 1/4 (360) |
| Drain Rough-In (from Side Wall) | 2 7/8 (75) |
| Drain: Diameter / Clearance | 2 (50) / 3 1/2 (90) |

FRAMING DIMENSIONS inches (mm)

| Type | D Depth | W Width | H Height | A | B | C |
|--------|--------------|------------|---------------|---------|------------|--------------|
| Alcove | 31 1/4 (795) | 60 (1525) | 80 3/8 (2040) | Box Out | 2 7/8 (75) | 14 1/4 (360) |



SUMP DATA

| Top of Drain to Bottom of Overflow | Capacity to Overflow gal (litr) | WIDTH @ centerline | | DEPTH @ centerline | |
|------------------------------------|---------------------------------|--------------------|---------------|--------------------|--------------|
| | | Top | Bottom | Top | Bottom |
| 9 7/8 (250) | 37 (940) | 51 1/2 (1310) | 45 1/2 (1155) | 22 1/4 (540) | 20 1/2 (520) |