



Submittal Sheet

Aquatic products may be specified as Lasco Bathware.

6036CFS

ADA/ANSI Compliant with Seat

CUSTOMER: _____

JOB NAME: _____

PO #: _____

QUOTE #: _____ QUANTITY: _____

SHIP TO: _____

_____/_____/_____
PLUMBING CONTRACTOR APPROVAL DATE

_____/_____/_____
GENERAL CONTRACTOR APPROVAL DATE

_____/_____/_____
ENGINEER APPROVAL DATE

_____/_____/_____
ARCHITECT APPROVAL DATE

IMPORTANT: ADA compliant showers with NO interior threshold will have water escape onto the bathroom floor. Aquatic highly recommends you take the following precautions:

1. Install only the minimum number of ADA units without an interior threshold required for each job. If possible install Aquatic's accessible models that have a 1/2" interior threshold to reduce the amount of water that escapes from the shower.
2. When installing units with NO interior threshold, install a FLOOR DRAIN to control the water that escapes onto the bathroom floor.
3. Depending on your application, you may choose to install Aquatic's vinyl flexible dam or removable threshold, which helps better retain water within the shower. However, these items may not necessarily meet ADA or other code requirements. Always confirm code compliance with your local building authority.

STANDARD FEATURES

- Code compliant when fully equipped and installed according to guidelines
- Lustrous, durable, easy-to-clean Lucite® cast acrylic
- Integral dome
- Back fixture wall
- Center/center drain location
- Slip resistant, textured bottom [ASTM F-462]

CONFIGURATION

- ☐ Fully equipped with seat — ADA/ANSI
Seat location ☐ LH ☐ RH
Includes one 24" x 1 1/2" diameter grab bar located on the side wall;
One 30" x 1 1/2" diameter grab bar located on the back wall;
white-cushioned, L-shaped fold-up seat; pressure balancing mixing valve
and hand-held shower assembly (on back wall offset seat), per ADA/ANSI guidelines

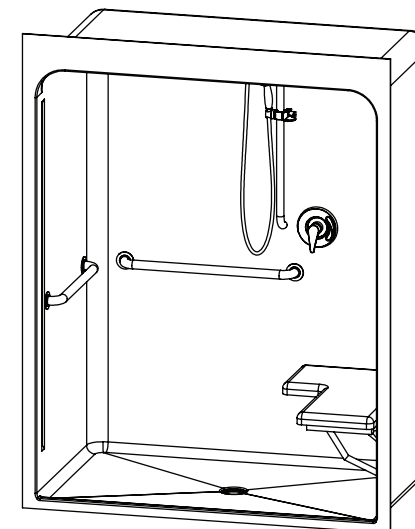
CUSTOM OPTIONS (not avail. if ADA/ANSI config. is selected)

- Fixture Wall ☐ LH ☐ RH ☐ Back Wall
Grab bars:
One 24" (side wall) and one 30" (back wall)
☐ Stainless steel (1 1/2" dia.) ☐ LH ☐ RH
☐ Powder-coated white (1 1/4" dia.) ☐ LH ☐ RH
L-shaped fold-up seat ☐ LH ☐ RH
☐ Cushioned white ☐ Phenolic teak ☐ Phenolic white
☐ Hand-held shower assembly with 30" slide bar and 60" hose
☐ Pressure balancing mixing valve

OPTIONAL ACCESSORIES (available for all models)

- ☐ Soap dish
☐ Curtain rod (Not ADA/ANSI compliant)
☐ Shower curtain
☐ Vinyl flexible dam
☐ Removable threshold
☐ Brass drain
Colors:
Standard ☐ White
Upgraded ☐ Biscuit
☐ Other (contact customer service for custom color options)
☐ Additional accessories:

For pricing of units and additional options, reference the Aquatic Price Book.



Int. Dim. 60 W x 36 D x 79 H
Ext. Dim. 65 W x 36 1/4 D x 83 3/4 H
Skirt Ht. 1 3/4" skirt, 1/2" interior threshold
Packaged Wt. 220 lbs. gross
Material Premium cast acrylic
Warranty Acrylic Finished Products — Five Years

inches

To complete your order, this document must be signed and faxed to the Aquatic Centralized Customer Service Center.

Fax (866) 544-5353 • Phone (800) 945-2726

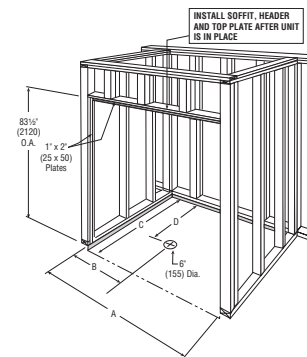


Submittal Sheet

Aquatic products may be specified as Lasco Bathware.

6036CFS ADA/ANSI Compliant with Seat

Please indicate changes needed.

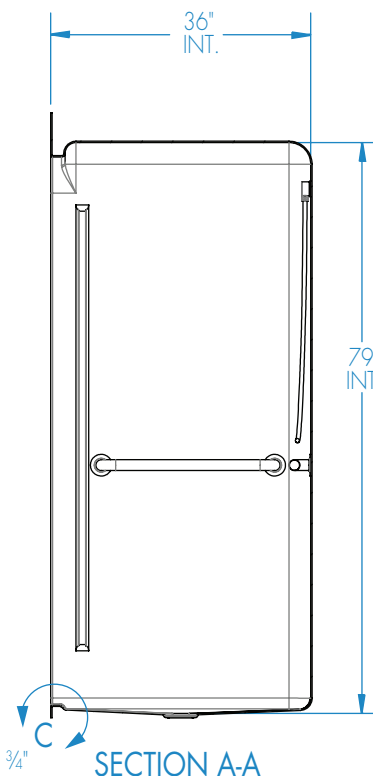
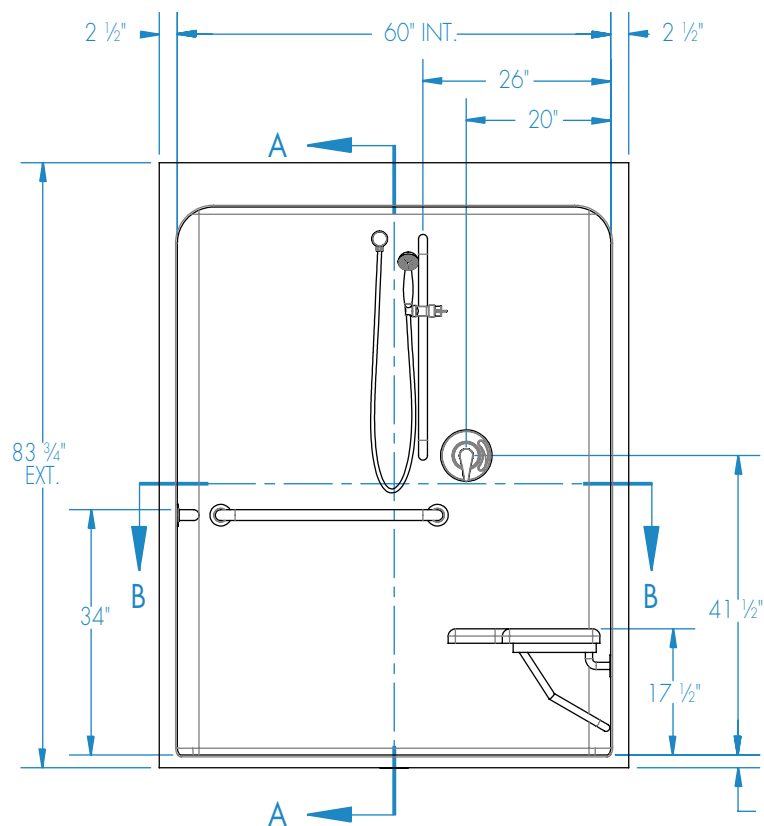


FRAMING DIMENSIONS Inches

A	B	C	D
65 1/8	32 1/2	37	19

Installation Options:

1. Install in a recessed pit for rough-in floor installation.
2. Build sub-floor to level finished floor with top of shower threshold.

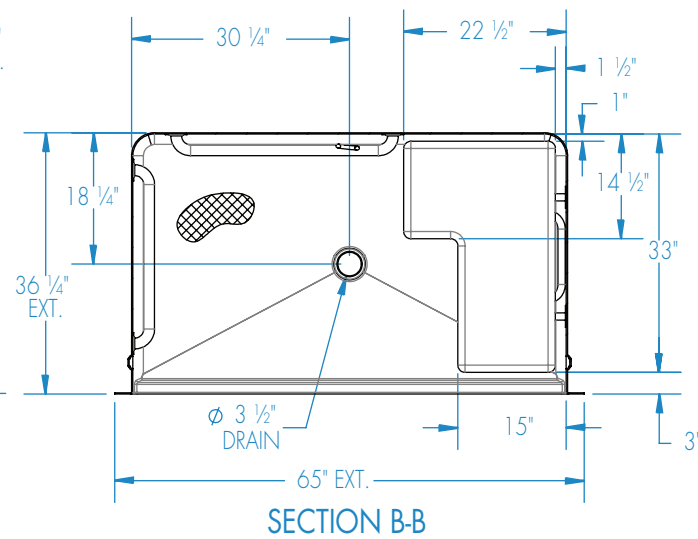


SECTION A-A



Recess or build-up required

DETAIL C



SECTION B-B

Shell tolerance: +0, -3/8" All other tolerances: ±1"

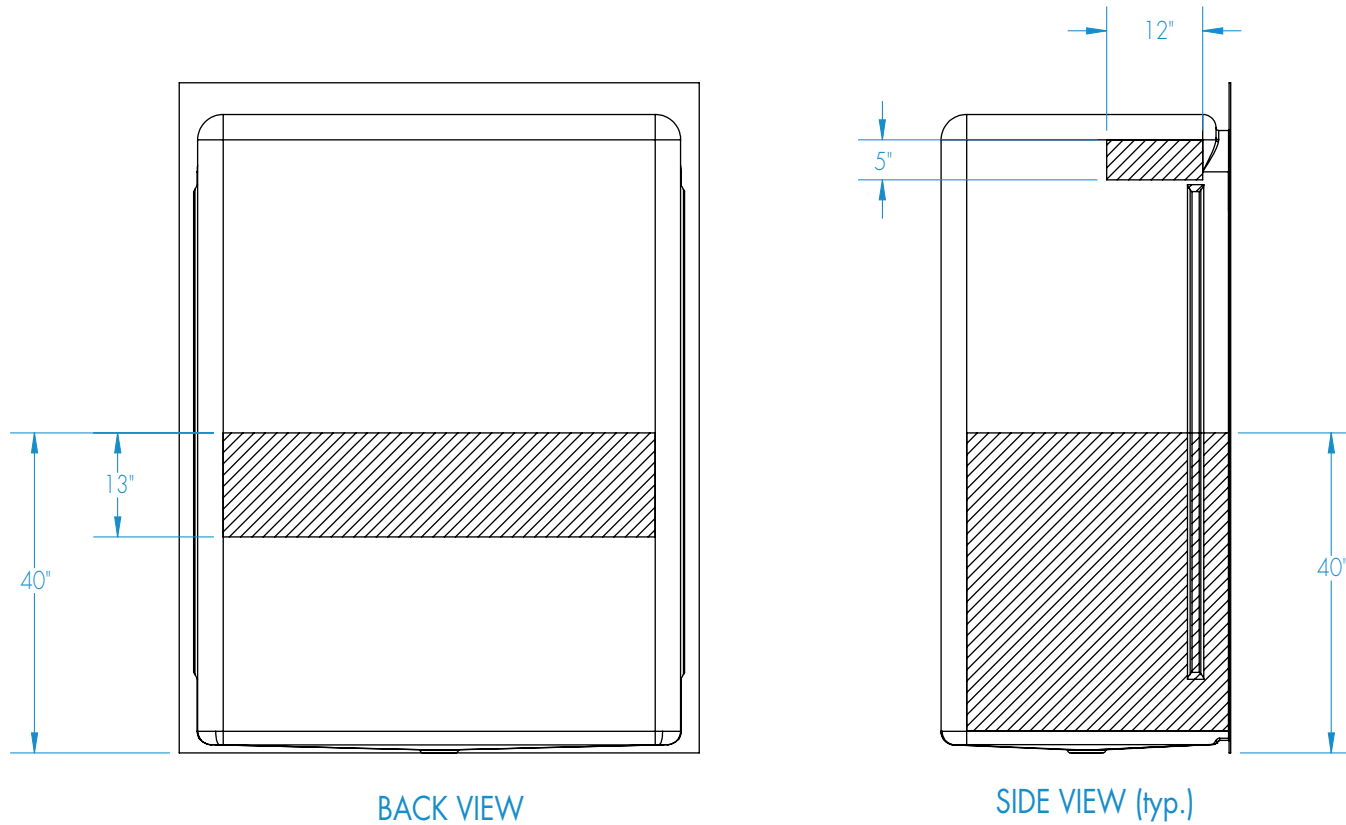


Submittal Sheet

Aquatic products may be specified as Lasco Bathware.

6036CFS ADA/ANSI Compliant with Seat
Please indicate changes needed.

Reinforcement Locations (Standard)



 = GRAB BAR REINFORCEMENT

Shell tolerance: +0, - 3/8" All other tolerances: ± 1"



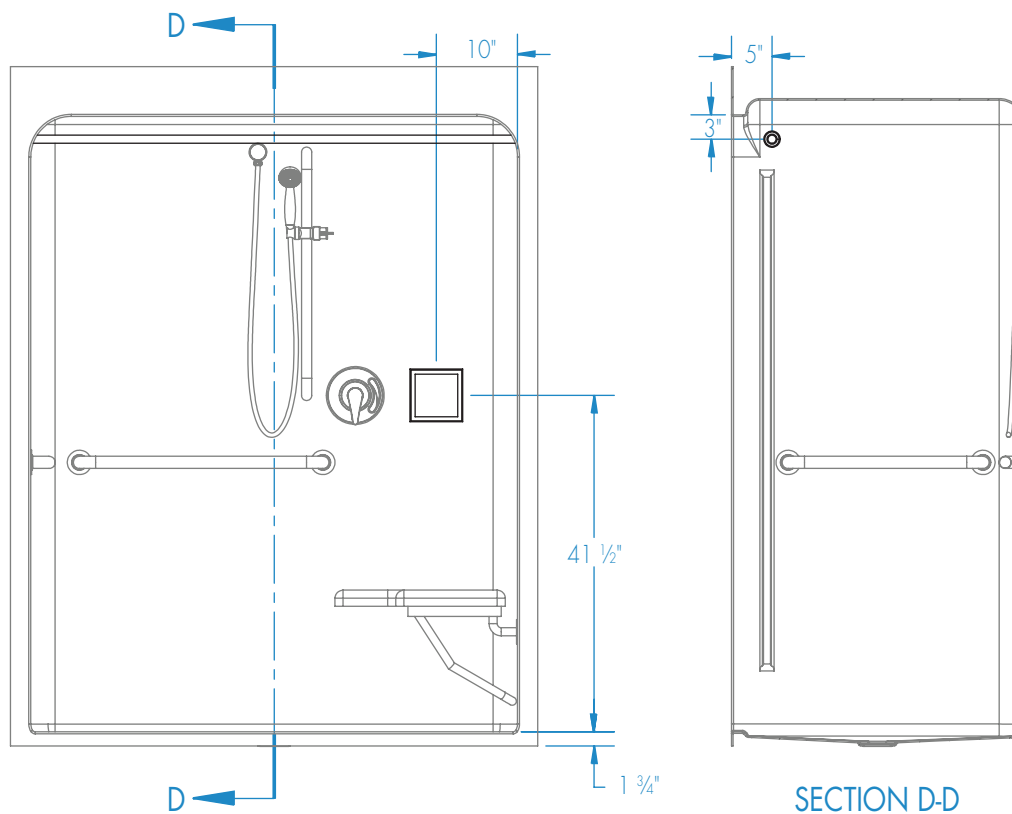
Submittal Sheet

Aquatic products may be specified as Lasco Bathware.

6036CFS ADA/ANSI Compliant with Seat

Please indicate changes needed.

Curtain Rod and Soap Dish Locations (Standard Valve Configuration)



Shell tolerance: +0, - 3/8" All other tolerances: ± 1"

FAX TO THE AQUATIC CENTRALIZED CUSTOMER SERVICE CENTER (866) 544-5353

Rev. 07.13.17