

# ALANA I – EVERYDAY BATHS

60 x 42 x 18 ½ inches

SOAKER MODEL #2660410

WHIRLPOOL MODEL #2660411



## FEATURES

- Island bath
- Deep bathing well
- Ergonomic backrest
- Slip-resistant textured bottom
- Universal drain
- AcrylX™ applied acrylic surface
- Lifetime limited warranty

### Whirlpool Features:

- 4 directional hydrotherapy jets
- Color matched or clear trim
- Pneumatic on/off control
- Advanced safety suction system

## OPTIONS

- Designer drain, waste & overflow

## AQUATIC ADVANTAGE

- National distribution
- 6 manufacturing facilities
- Private fleet
- Centralized customer service
- Field support

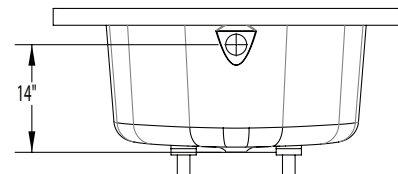
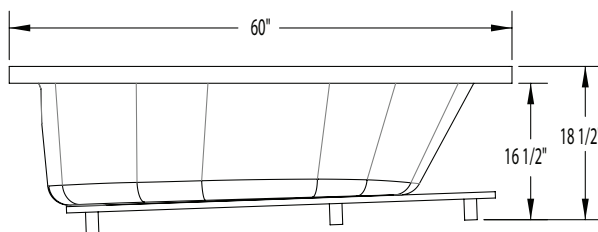
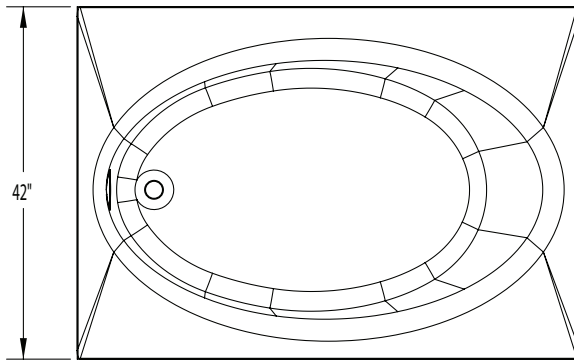
## COLOR OPTIONS

Stock	Upgraded	Premium
White (C)	Almond (NA) Linen/Biscuit (C) Bone (C)	Black (NA) Mexican Sand (NA) Sand Bar (NA) Sterling Silver (NA)



# ALANA I

60 x 42 x 18 1/2  
inches



**FEATURES** lbs      Dimensional Tolerance  $\pm 3/16"$ . Dimensions needed for site preparation should be measured from the unit. Aquatic assumes no responsibility for preparatory work.

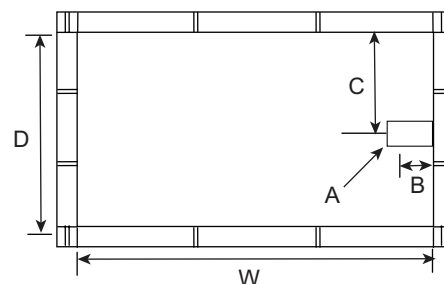
Model #	Material	Jets	Motor	Controls	Drain	Net Wt.	Pkg. Wt.
Soaker #2660410	AcrylX™	0	-	-	Universal	64	69
Whirlpool #2660411	AcrylX™	4	63 GPM	Pneumatic	Universal	124	129

## DIMENSIONS

Specifications	inches
Width: Overall / Net	60
Depth: Overall / Net	42 / 42
Height: Overall / Net	18 1/2
Enclosure Opening	-
Skirt Height	
Drain Rough-In (from Back Wall)	21
Drain Rough-In (from Side Wall)	2 1/2
Drain: Diameter / Clearance	2 / 1

## FRAMING DIMENSIONS inches

Type	D Depth	W Width	H Height	A	B	C
Island (4T)	40	58	18	Box Out	2 1/2	21
Island (Drop-In)	40	58	16 1/2	Box Out	2 1/2	21



## SUMP DATA

Top of Drain to Bottom of Overflow	Capacity to Overflow gal	Min. Operating Capacity gal	WIDTH @ centerline		DEPTH @ centerline	
			Top	Bottom	Top	Bottom
10 7/8	55	50	52	42	29 1/2	27 1/2