



Submittal Sheet

Aquatic products may be specified as Lasco Bathware.

1363BFC2P

ANSI Compliant

CUSTOMER: _____

JOB NAME: _____

PO #: _____

QUOTE #: _____ QUANTITY: _____

SHIP TO: _____

_____/_____/_____
PLUMBING CONTRACTOR APPROVAL DATE

_____/_____/_____
GENERAL CONTRACTOR APPROVAL DATE

_____/_____/_____
ENGINEER APPROVAL DATE

_____/_____/_____
ARCHITECT APPROVAL DATE

IMPORTANT:

ADA compliant showers with NO interior threshold will have water escape onto the bathroom floor. Aquatic highly recommends you take the following precautions:

1. Install only the minimum number of ADA units without an interior threshold required for each job. If possible install Aquatic's accessible models that have a ½" interior threshold to reduce the amount of water that escapes from the shower.
2. When installing units with NO interior threshold, install a FLOOR DRAIN to control the water that escapes onto the bathroom floor.
3. Depending on your application, you may choose to install Aquatic's vinyl flexible dam or removable threshold, which helps better retain water within the shower. However, these items may not necessarily meet ADA or other code requirements. Always confirm code compliance with your local building authority.

STANDARD FEATURES

- Code compliant when fully equipped and installed according to guidelines
- Barrier-free design
- Center drain location
- Slip resistant, textured bottom [ASTM F-462]

CONFIGURATION

- ☐ Fully equipped with seat-ANSI
Seat location ☐ LH ☐ RH
Includes 1½" diameter stainless steel L-shaped grab bar;
1½" dia. X 18" vertical grab bar; white-cushioned, L-shaped
fold-up seat; pressure balancing mixing valve and hand-held
shower assembly, (installed opposite side of seat) per ANSI guidelines

CUSTOM OPTIONS (not available if ANSI configuration is selected)

- Fixture Wall ☐ LH ☐ RH ☐ Back wall
Horizontal L-shaped grab bar
Stainless steel (1½" dia.) ☐ LH ☐ RH
Powder-coated white (1¼" dia.) ☐ LH ☐ RH
☐ Hand-held shower assembly with 30" slide bar and 60" hose
☐ Pressure balancing mixing valve

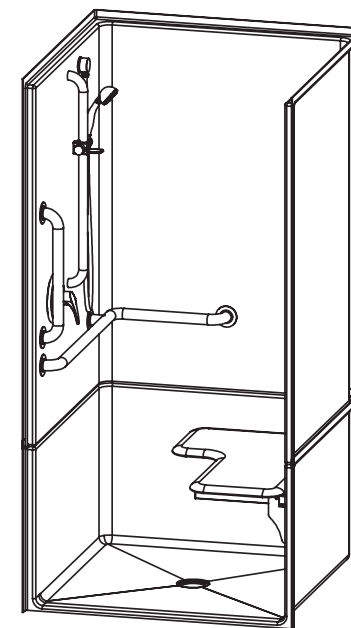
OPTIONAL ACCESSORIES (available for all models)

- ☐ Soap dish
☐ Curtain rod (Not ANSI compliant)
☐ Shower curtain
☐ Vinyl flexible dam
☐ Removable threshold
☐ Brass drain

Colors:

- Standard ☐ White
Upgraded ☐ Almond ☐ Biscuit ☐ Bone
☐ Other (contact customer service for custom color options)
☐ Additional accessories:

For pricing of units and additional options, reference the Aquatic Price Book.



Int. Dim. 36 W x 36 D x 75 ¼ H
Ext. Dim. 39 W x 38 ¼ D x 77 ½ H
Skirt Ht. ¾ skirt, NO interior threshold
Packaged Wt. 182 lbs. gross
Material AcrylX™ applied acrylic
Warranty AcrylX™ Finished Products — Lifetime Limited
(30 year commercial)

inches

To complete your order, this document must be signed and faxed to the Aquatic Centralized Customer Service Center.

Fax (866) 544-5353 • Phone (800) 945-2726

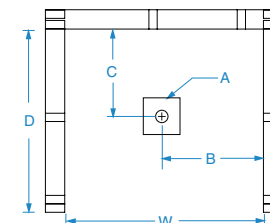


Submittal Sheet

Aquatic products may be specified as Lasco Bathware.

1363BFC2P ANSI Compliant

Please indicate changes needed.

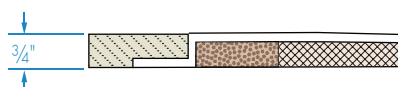
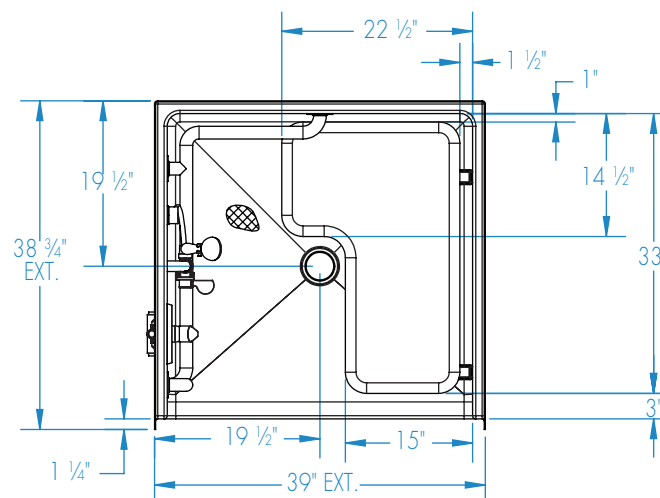
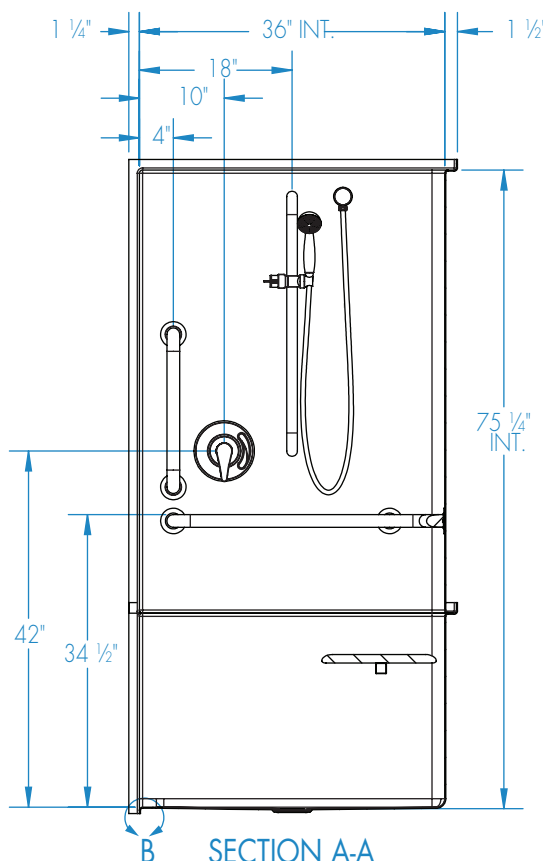
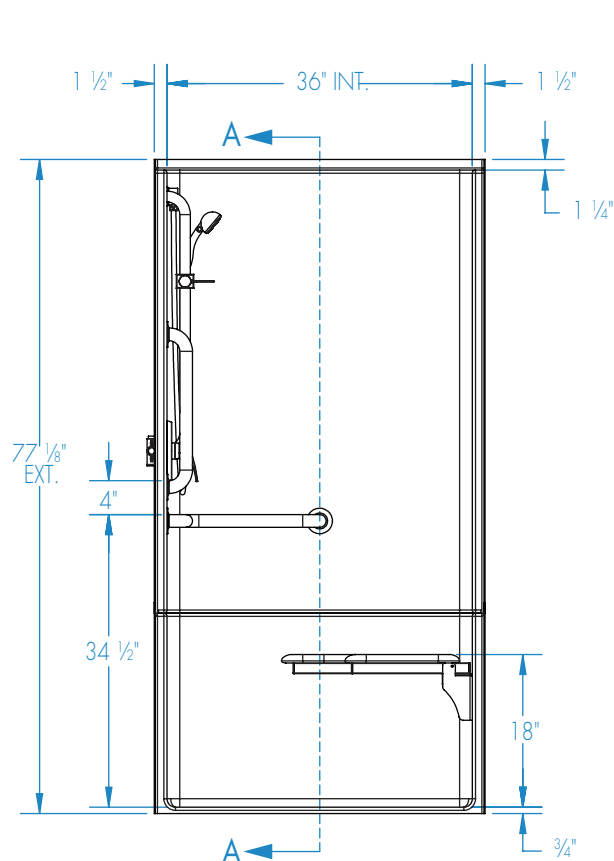


FRAMING DIMENSIONS inches

Type	D Depth	W Width	A	B	C
Alcove	38 3/4	39 1/8	Box Out	19 1/2	19

Installation Options:

1. Install in a recessed pit for rough-in floor installation.
2. Build sub-floor to level finished floor with top of shower threshold.



Recess or build-up required

DETAIL B

Shell tolerance: +0, -3/8" All other tolerances: ±1"



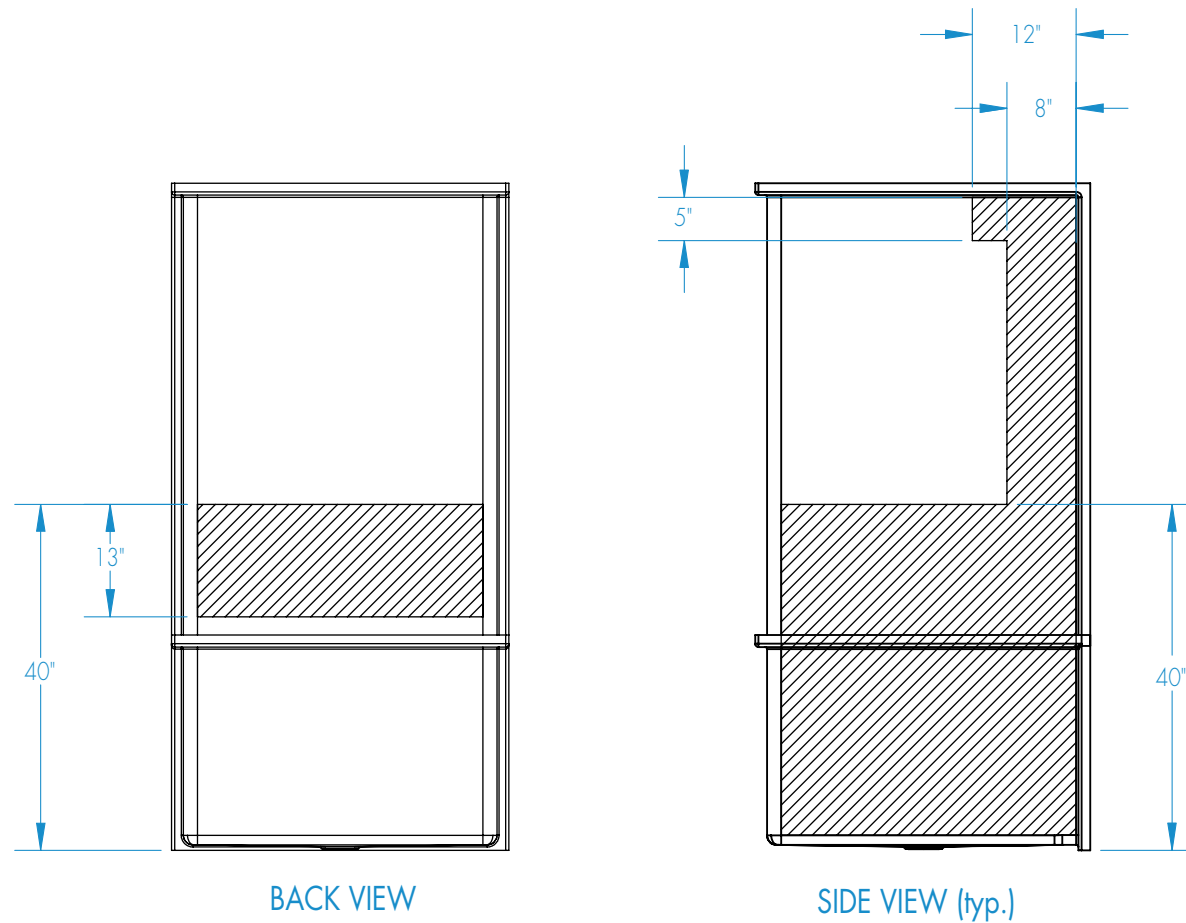
Submittal Sheet

Aquatic products may be specified as Lasco Bathware.

1363BFC2P ANSI Compliant

Please indicate changes needed.

Reinforcement Locations (Standard)



Shell tolerance: +0, - $\frac{3}{16}$ " All other tolerances: ± 1 "



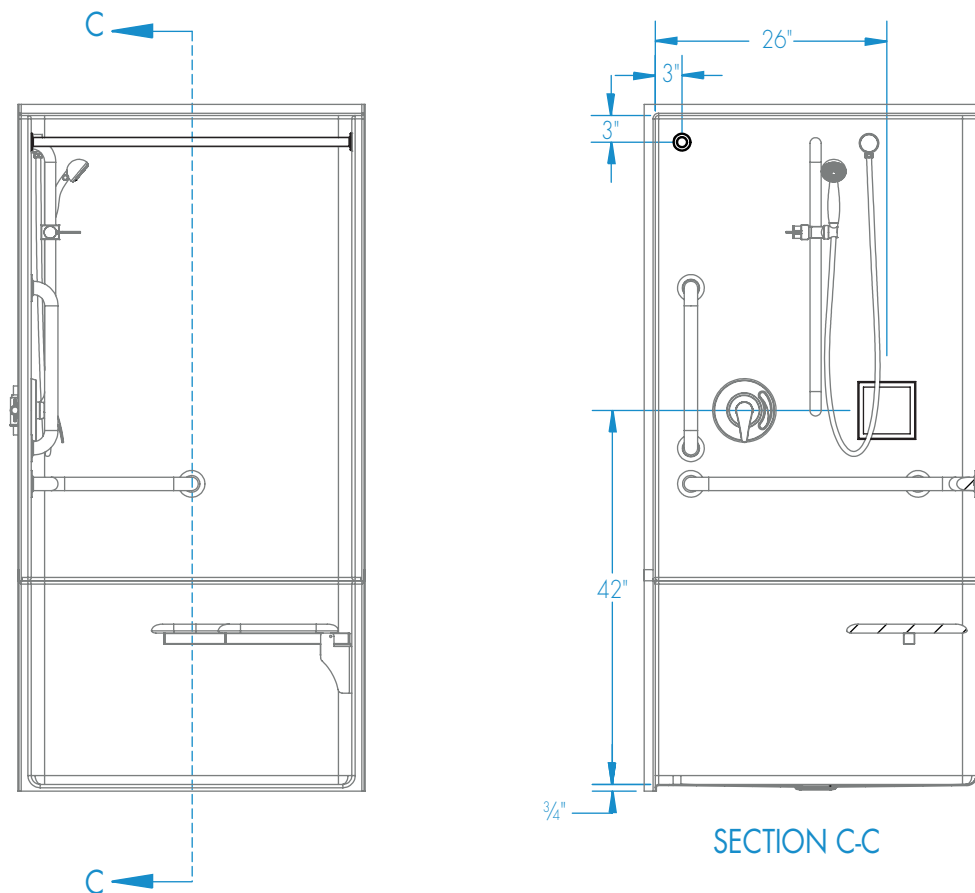
Submittal Sheet

Aquatic products may be specified as Lasco Bathware.

1363BFC2P ANSI Compliant

Please indicate changes needed.

Curtain Rod and Soap Dish Locations (Standard Valve Configuration)



Shell tolerance: +0, - 3/8" All other tolerances: ± 1"