



# Submittal Sheet

Aquatic products may be specified as Lasco Bathware.

## 1363BFSMA

521 CMR Compliant\*

CUSTOMER: \_\_\_\_\_

JOB NAME: \_\_\_\_\_

PO #: \_\_\_\_\_

QUOTE #: \_\_\_\_\_ QUANTITY: \_\_\_\_\_

SHIP TO: \_\_\_\_\_

\_\_\_\_\_/\_\_\_\_\_/\_\_\_\_\_  
PLUMBING CONTRACTOR APPROVAL DATE

\_\_\_\_\_/\_\_\_\_\_/\_\_\_\_\_  
GENERAL CONTRACTOR APPROVAL DATE

\_\_\_\_\_/\_\_\_\_\_/\_\_\_\_\_  
ENGINEER APPROVAL DATE

\_\_\_\_\_/\_\_\_\_\_/\_\_\_\_\_  
ARCHITECT APPROVAL DATE

**IMPORTANT:** ADA compliant showers with NO interior threshold will have water escape onto the bathroom floor. Aquatic highly recommends you take the following precautions:

1. Install only the minimum number of ADA units without an interior threshold required for each job. If possible install Aquatic's accessible models that have a ½" interior threshold to reduce the amount of water that escapes from the shower.
2. When installing units with NO interior threshold, install a FLOOR DRAIN to control the water that escapes onto the bathroom floor.
3. Depending on your application, you may choose to install Aquatic's vinyl flexible dam or removable threshold, which helps better retain water within the shower. However, these items may not necessarily meet ADA or other code requirements. Always confirm code compliance with your local building authority.

### STANDARD FEATURES

- Code compliant when fully equipped and installed according to guidelines
- Barrier-free design
- Center drain location
- Slip resistant, textured bottom [ASTM F-462]

### CONFIGURATION

- ☐ Fully equipped-521CMR\*  
Seat location ☐ LH ☐ RH  
Includes two 30" x 1¼" diameter etched grab bars; white-cushioned, rectangular fold-up seat; pressure balancing mixing valve and hand-held shower assembly (on back wall offset seat), per 521 CMR guidelines

### CUSTOM OPTIONS (not available if 521 CMR config. is selected)

- Fixture Wall ☐ Left ☐ Right ☐ Back Wall  
☐ Etched grab bars: Two 30" x 1¼" dia. (side wall)  
☐ Hand-held shower assembly with 30" slide bar and 60" hose  
☐ Pressure balancing mixing valve

### OPTIONAL ACCESSORIES (available for all models)

- ☐ Soap dish  
☐ Curtain rod  
☐ Shower curtain  
☐ Vinyl flexible dam  
☐ Removable threshold  
☐ Brass drain

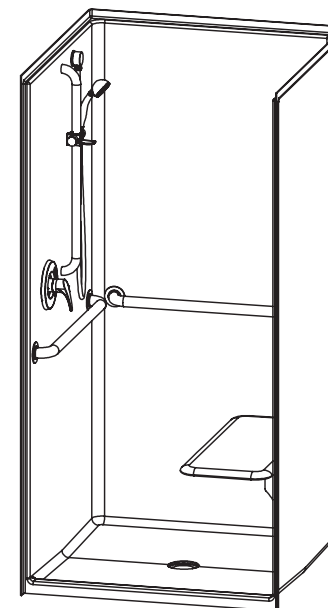
Colors:

- Standard ☐ White  
Upgraded ☐ Almond ☐ Biscuit ☐ Bone  
☐ Other (contact customer service for custom color options)  
☐ Additional accessories:

For pricing of units and additional options, reference the Aquatic Price Book.

\*This configuration may not be compliant in all applications.

Call customer service to confirm MA code compliance.



Int. Dim.	36 W x 36 D x 74 ½ H
Ext. Dim.	38 W x 38 ¼ D x 77 ½ H
Skirt Ht.	1 ¾ skirt, ½ interior threshold
Packaged Wt.	182 lbs. gross
Material	AcrylX™ applied acrylic
Warranty	AcrylX™ Finished Products — Lifetime Limited (30 year commercial)

inches

To complete your order, this document must be signed and faxed to the Aquatic Centralized Customer Service Center.

**Fax (866) 544-5353 • Phone (800) 945-2726**

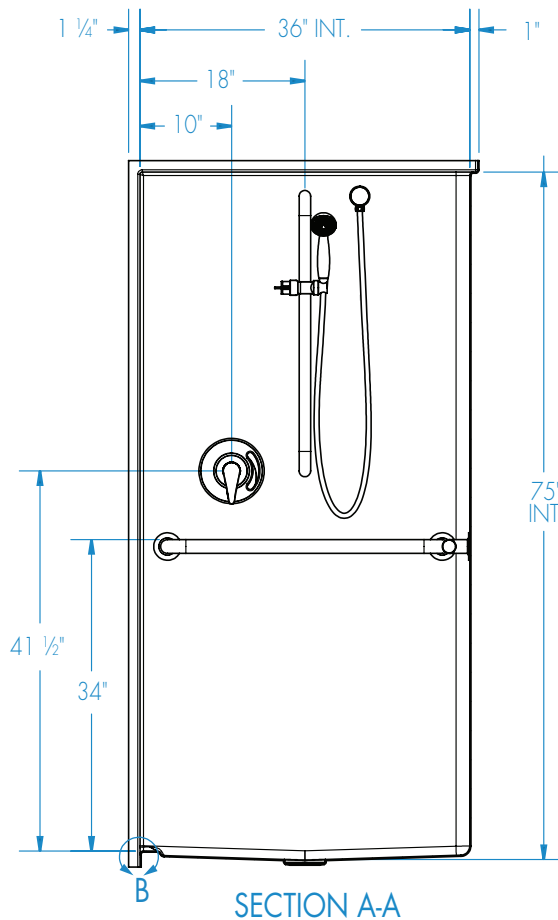
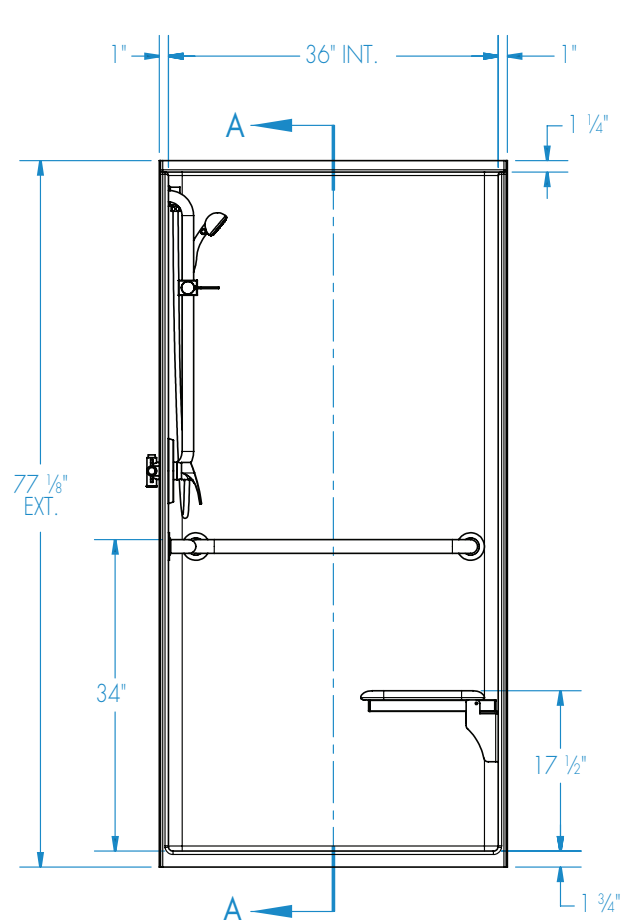


# Submittal Sheet

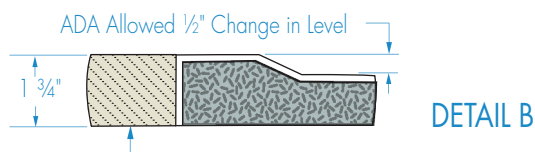
Aquatic products may be specified as Lasco Bathware.

**1363BFSMA** 521 CMR Compliant\*

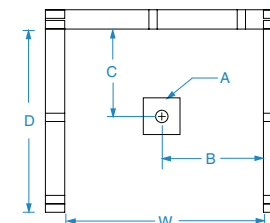
Please indicate changes needed.



SECTION A-A



DETAIL B

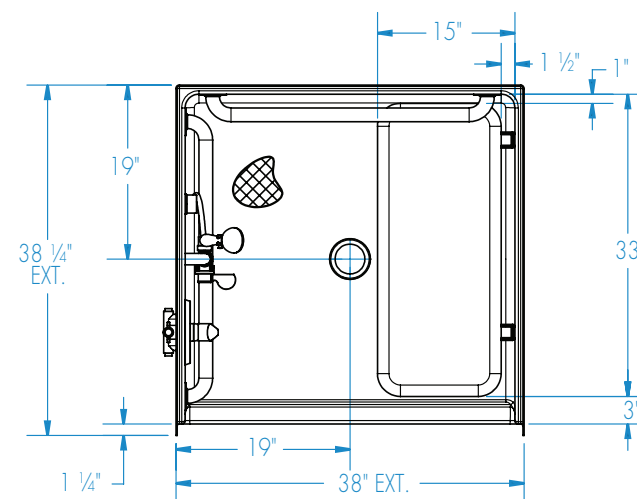


FRAMING DIMENSIONS inches

Type	D Depth	W Width	A	B	C
Alcove	38 1/4	38 1/8	Box Out	19	19

**Installation Options:**

1. Install in a recessed pit for rough-in floor installation.
2. Build sub-floor to level finished floor with top of shower threshold.



Shell tolerance: +0, - 3/8" All other tolerances: ± 1"