



# Submittal Sheet

Aquatic products may be specified as Lasco Bathware.

## F3636DPAN

ADA/ANSI Compliant

CUSTOMER: \_\_\_\_\_

JOB NAME: \_\_\_\_\_

PO #: \_\_\_\_\_

QUOTE #: \_\_\_\_\_ QUANTITY: \_\_\_\_\_

SHIP TO: \_\_\_\_\_

\_\_\_\_\_

\_\_\_\_\_/\_\_\_\_\_/\_\_\_\_\_  
PLUMBING CONTRACTOR APPROVAL DATE

\_\_\_\_\_/\_\_\_\_\_/\_\_\_\_\_  
GENERAL CONTRACTOR APPROVAL DATE

\_\_\_\_\_/\_\_\_\_\_/\_\_\_\_\_  
ENGINEER APPROVAL DATE

\_\_\_\_\_/\_\_\_\_\_/\_\_\_\_\_  
ARCHITECT APPROVAL DATE

### STANDARD FEATURES

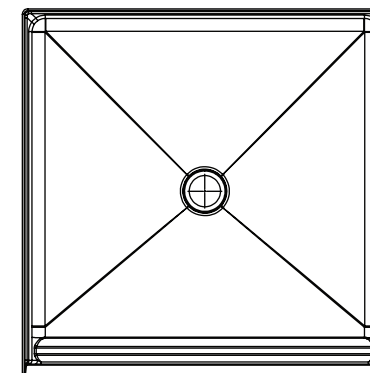
- Code compliant when fully equipped and installed according to guidelines
- Pre-leveled base
- Center drain location
- Slip resistant, textured bottom [ASTM F-462]

### OPTIONS

Colors:

- Standard ☐ White  
Upgraded ☐ Almond ☐ Biscuit ☐ Bone  
☐ Other (contact customer service for custom color options)  
☐ Brass drain

For pricing of units and additional options, reference the Aquatic Price Book.



### IMPORTANT:

ADA compliant showers with NO interior threshold will have water escape onto the bathroom floor. Aquatic highly recommends you take the following precautions:

1. Install only the minimum number of ADA units without an interior threshold required for each job. If possible install Aquatic's accessible models that have a 1/2" interior threshold to reduce the amount of water that escapes from the shower.
2. When installing units with NO interior threshold, install a FLOOR DRAIN to control the water that escapes onto the bathroom floor.
3. Depending on your application, you may choose to install Aquatic's vinyl flexible dam or removable threshold, which helps better retain water within the shower. However, these items may not necessarily meet ADA or other code requirements. Always confirm code compliance with your local building authority.



Int. Dim. 36 W x 36 D x 3 3/8 H  
Ext. Dim. 38 W x 38 1/4 D x 5 H  
Skirt Ht. 3/4 skirt, 1/2 beveled threshold  
Packaged Wt. 40 lbs. gross  
Material AcrylX™ applied acrylic  
Warranty AcrylX™ Finished Products — Lifetime Limited  
(30 year commercial)

inches

To complete your order, this document must be signed and faxed to the Aquatic Centralized Customer Service Center.

**Fax (866) 544-5353 • Phone (800) 945-2726**

Please indicate custom changes on reverse side drawings.

Rev. 10.13.17

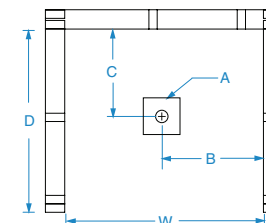
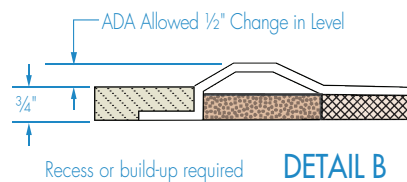
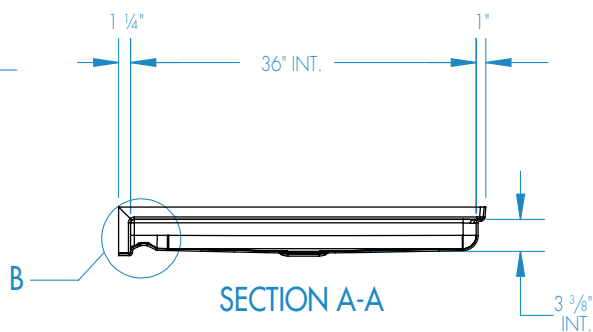
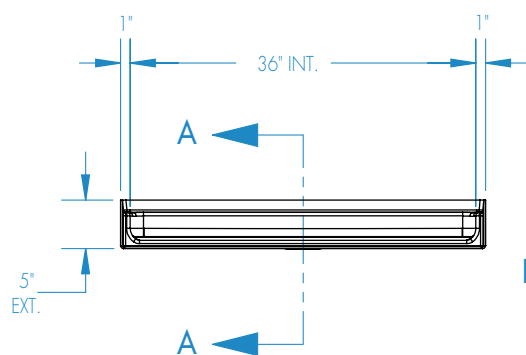
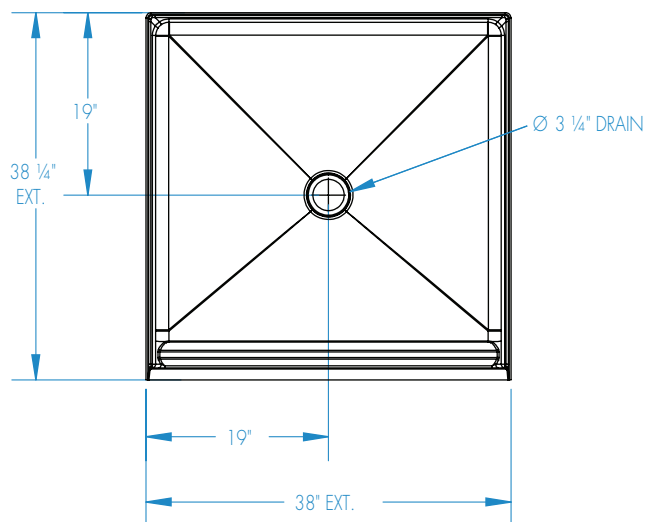


# Submittal Sheet

Aquatic products may be specified as Lasco Bathware.

**F3636DPAN** ADA/ANSI Compliant

Please indicate changes needed.



FRAMING DIMENSIONS inches

Type	D Depth	W Width	A	B	C
Alcove	38 1/4	38 1/8	Box Out	19	19

**Installation Options:**

1. Install in a recessed pit for rough-in floor installation.
2. Build sub-floor to level finished floor with top of shower threshold.

Shell tolerance: +0, - 3/8" All other tolerances: ± 1"