

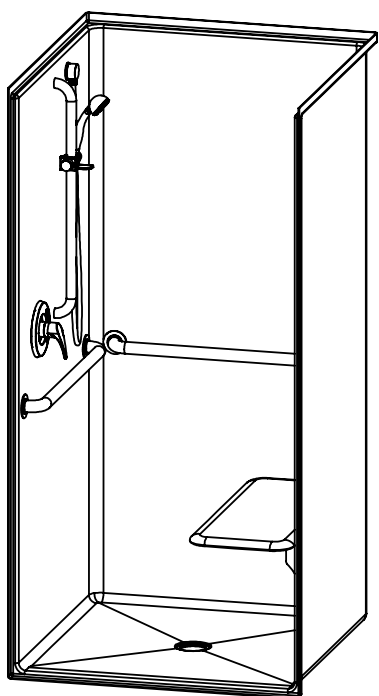
1363BFSCMA – ACCESSIBLE SHOWERS

inches

Interior: 36 x 36 x 75

Exterior: 38 x 38 1/4 x 77

The 1363BFSCMA transfer shower features innovative installation design, including an engineered leveled base and improved front threshold. A true time and money saver, our pre-leveled base lets you install directly on a **level** floor. And its front threshold is engineered to keep a constant level without the use of brackets during installation.



AQUATIC ADVANTAGE

- 6 manufacturing facilities
- Private fleet
- Centralized customer service
- Field support

COLOR & TRIM OPTIONS

| Stock | Upgraded |
|-------|----------|
| White | Almond |
| | Biscuit |
| | Bone |

**Additional custom colors available.
(Contact Customer Service)

FEATURES

- Massachusetts only
- Pre-leveled base
- AcrylX™ applied acrylic surface
- 3/4" skirt
- No threshold
- Barrier free when properly installed
- Smooth wall
- Center drain
- Lifetime limited warranty (30 year commercial)

OPTIONS

- RH or LH fixture wall
- Grab bars
- Fold-up seat
- Hand-held shower assembly with slide bar
- Pressure balancing mixing valve
- Soap dish
- Curtain rod and/ or shower curtain

CODE COMPLIANCE

- 521-CMR

**Code compliant when fully equipped and installed according to guidelines.



Aquatic products may be specified as Lasco Bathware.

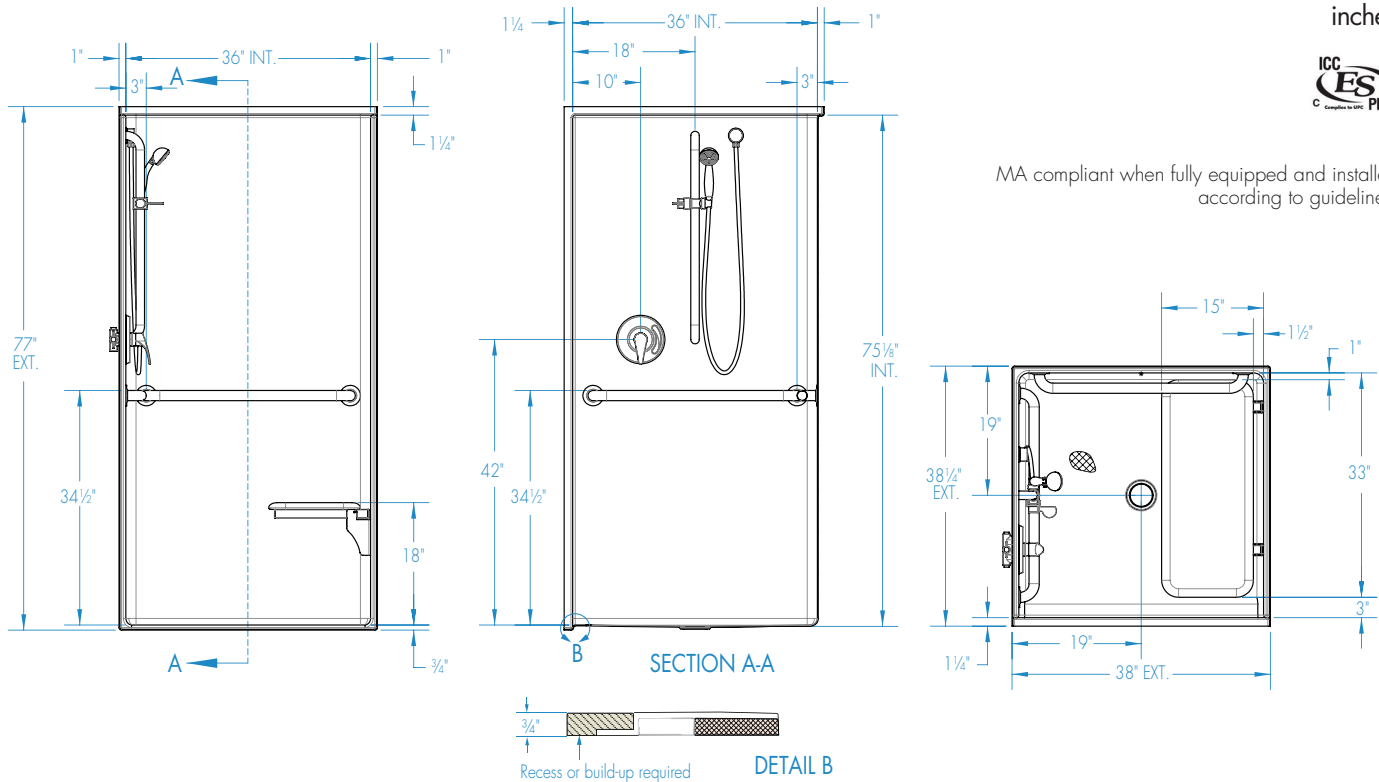


1363BFSCMA

Interior: 36 x 36 x 75
Exterior: 38 x 38 1/4 x 77
inches



MA compliant when fully equipped and installed according to guidelines.



FEATURES

Dimensional Tolerance $\pm \frac{3}{8}$ ". Dimensions needed for site preparation should be measured from the unit. Aquatic assumes no responsibility for preparatory work.

| Type and Model # | Material | Wall Finish | Pieces | Drain | Dam/Skirt Height | Net Wt. lbs | Pkg. Wt. lbs |
|--------------------|----------|-------------|--------|--------|--------------------------|-------------|--------------|
| Shower #1363BFSCMA | AcrylX™ | Smooth | 1 | Center | 3/4" skirt, NO threshold | 172 | 182 |

DIMENSIONS

| Specifications | inches |
|---------------------------------|-------------|
| Width: Overall / Net | 38 / 36 |
| Depth: Overall / Net | 38 1/4 / 36 |
| Height: Overall / Net | 77 / 75 |
| Enclosure Opening: | 36 |
| Skirt Height: | 3/4 |
| Drain Rough-In (from Back Wall) | 19 |
| Drain Rough-In (from Side Wall) | 19 |

FRAMING DIMENSIONS inches

| Type | D Depth | W Width | H Height | A | B | C |
|--------|---------|---------|----------|---------|----|----|
| Alcove | 38 1/4 | 38 1/8 | — | Box Out | 19 | 19 |

