

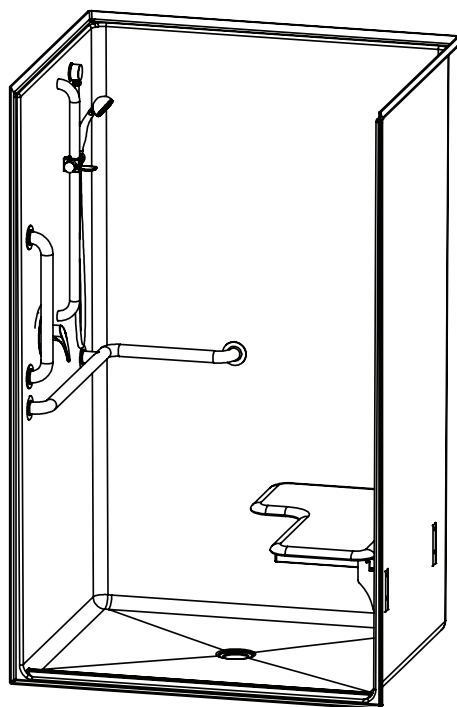
1483BFSD – ACCESSIBLE SHOWERS

inches

Interior: 46 x 36 x 75 ¼

Exterior: 48 x 38 ¼ x 77 ¼

The 1483BFSD accessible shower features innovative installation design, including an engineered leveled base and improved front threshold. A true time and money saver, our pre-leveled base lets you install directly on a **level** floor. And its front threshold is engineered to keep a constant level without the use of brackets during installation.



AQUATIC ADVANTAGE

- 6 manufacturing facilities
- Private fleet
- Centralized customer service
- Field support

COLOR & TRIM OPTIONS

Stock	Upgraded
White	Almond
	Biscuit
	Bone

**Additional custom colors available.
(Contact Customer Service)

FEATURES

- Pre-leveled base
- AcrylX™ applied acrylic surface
- ¾" skirt
- ½" interior threshold
- Barrier free when properly installed
- Smooth wall
- Center drain
- Lifetime limited warranty (30 year commercial)

OPTIONS

- RH or LH fixture wall
- Grab bars
- Fold-up seat
- Hand-held shower assembly with slide bar
- Pressure balancing mixing valve
- Soap dish
- Curtain rod and/ or shower curtain

CODE COMPLIANCE

- IAPMO Z124-2011
- CSA B45-11

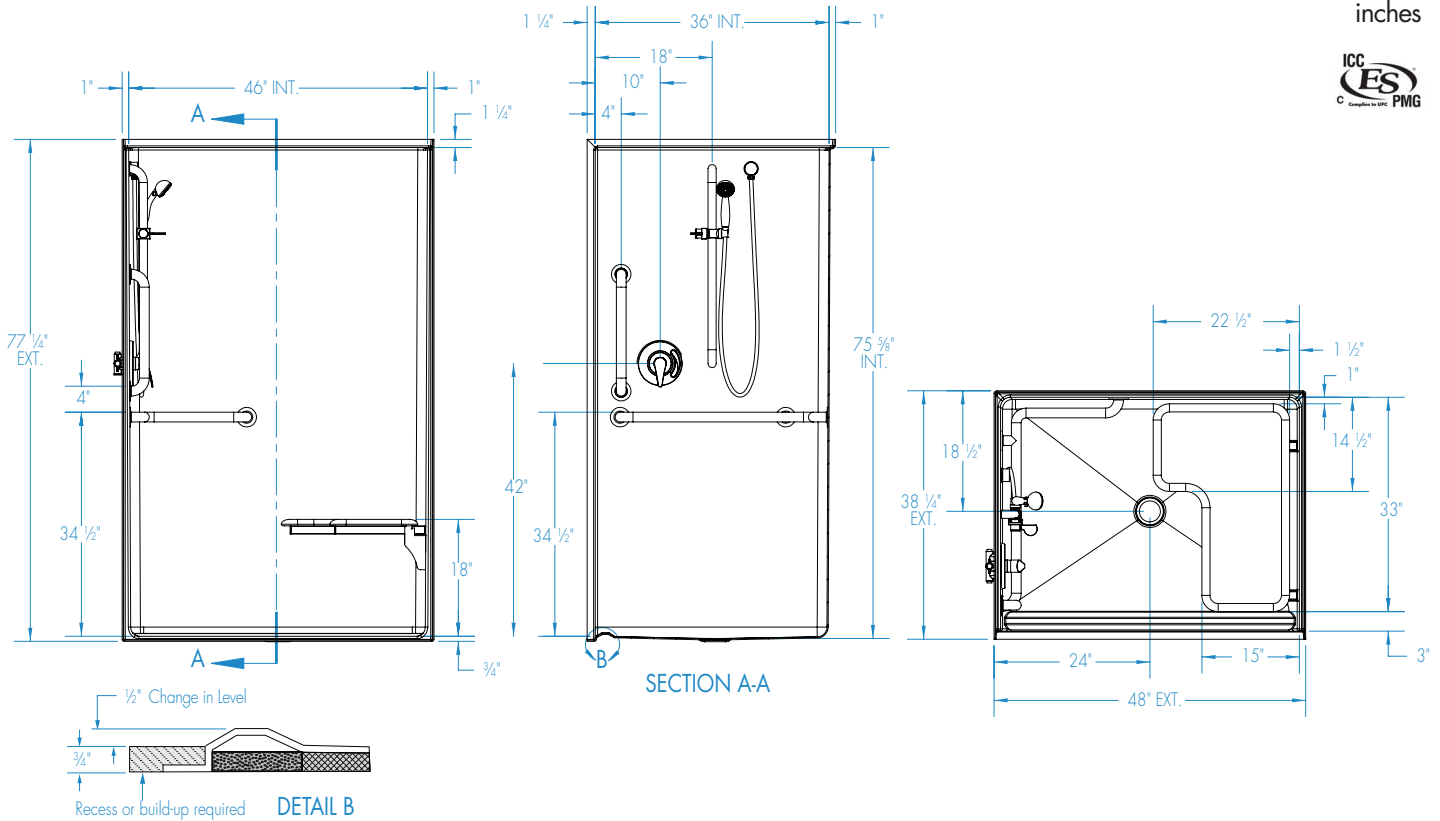


Aquatic products may be
specified as Lasco Bathware.



1483BFSD

Interior: 46 x 36 x 75 1/4
Exterior: 48 x 38 1/4 x 77 1/4
inches



FEATURES

Dimensional Tolerance $\pm \frac{3}{16}$ ". Dimensions needed for site preparation should be measured from the unit. Aquatic assumes no responsibility for preparatory work.

Type and Model #	Material	Wall Finish	Pieces	Drain	Dam/Skirt Height	Net Wt. lbs	Pkg. Wt. lbs
Shower #1483BFSD	AcrylX™	Smooth	1	Center	3/4" skirt 1/2" interior threshold	118	128

DIMENSIONS

Specifications	inches
Width: Overall / Net	48 / 46
Depth: Overall / Net	38 1/4 / 36
Height: Overall / Net	77 1/4 / 75 1/4
Enclosure Opening:	46
Skirt Height:	3/4
Drain Rough-In (from Back Wall)	18 1/2
Drain Rough-In (from Side Wall)	24

FRAMING DIMENSIONS inches

Type	D Depth	W Width	H Height	A	B	C
Alcove	38 1/4	48 1/8	—	Box Out	24	18 1/2

