

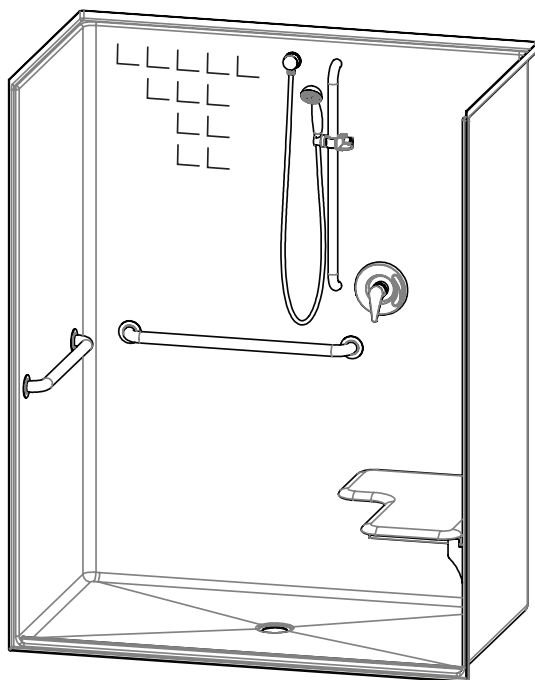
1603BFSTD – ACCESSIBLE SHOWERS

inches

Interior: 60 x 34 x 75 $\frac{5}{8}$

Exterior: 62 x 36 $\frac{1}{4}$ x 77 $\frac{1}{4}$

The 1603BFSTD roll-in shower features innovative installation design, including an engineered leveled base and improved front threshold. A true time and money saver, our pre-leveled base lets you install directly on a **level** floor. And its front threshold is engineered to keep a constant level without the use of brackets during installation.



AQUATIC ADVANTAGE

- National distribution
- 6 manufacturing facilities
- Private fleet
- Centralized customer service
- Field support

COLOR & TRIM OPTIONS

Stock	Upgraded
White	Almond Biscuit Bone

**Additional custom colors available.
(Contact Customer Service)

FEATURES

- Pre-leveled base
- AcrylX™ applied acrylic surface
- $\frac{3}{4}$ skirt
- $\frac{1}{2}$ threshold
- Barrier free when properly installed
- Smooth tile
- Center drain
- Lifetime limited warranty (30 year commercial)
- Region availability: East Zone

OPTIONS

- Grab bars
- Fold-up seat
- Hand-held shower assembly with slide bar
- Pressure balancing mixing valve
- Soap dish
- Curtain rod and/or shower curtain

CODE COMPLIANCE

- TAS
- ADA
- FHA
- ICC/ANSI A117.1
- IAPMO Z124-2011
- HUD UM73a
- CAN/CSA-B651-04
- CSA-B45-11

**Code compliant when fully equipped and installed according to guidelines.



Aquatic products may be specified as Lasco Bathware.

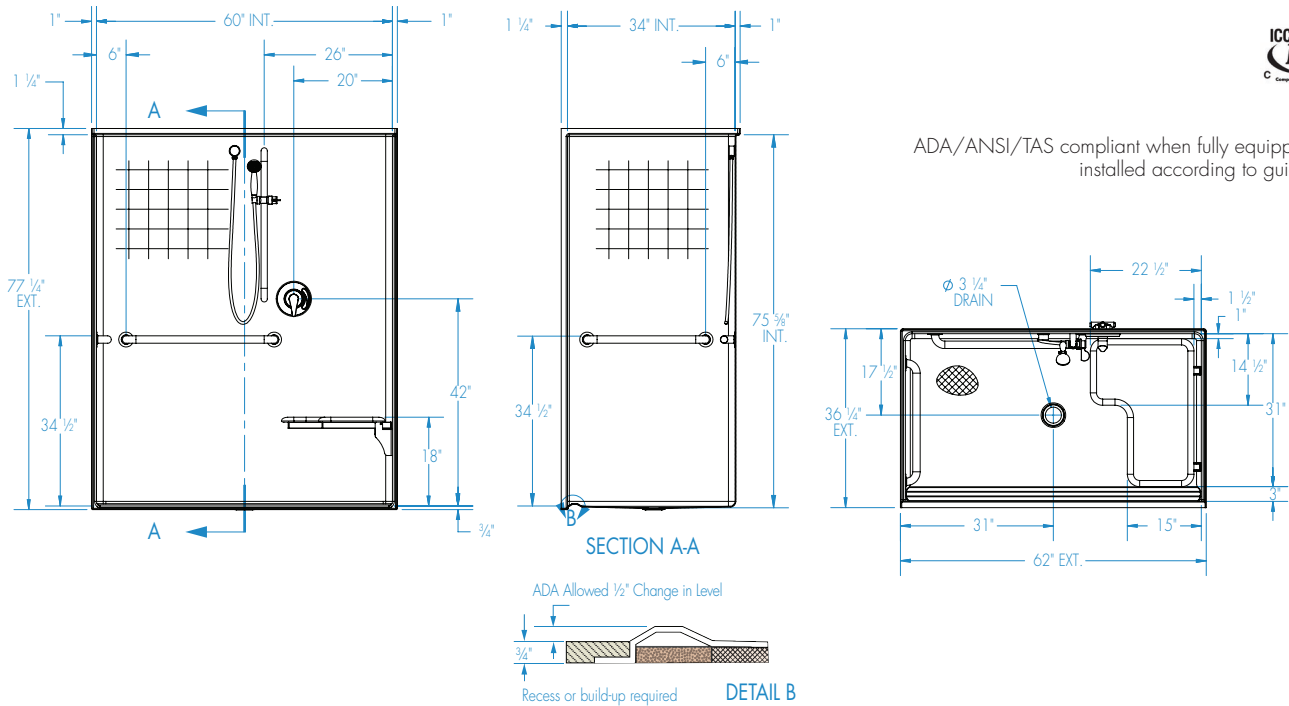


1603BFSTD

Interior: 60 x 34 x 75 5/8
Exterior: 62 x 36 1/4 x 77 1/4
inches



ADA/ANSI/TAS compliant when fully equipped and installed according to guidelines.



FEATURES

Dimensional Tolerance $\pm \frac{3}{8}$ ". Dimensions needed for site preparation should be measured from the unit. Aquatic assumes no responsibility for preparatory work.

Type and Model #	Material	Wall Finish	Pieces	Drain	Dam/Skirt Height	Net Wt. lbs	Pkg. Wt. lbs
Shower #1603BFSTD	AcrylX™	Smooth tile	1	Center	3/4" skirt, 1/2" threshold	202	212

DIMENSIONS

Specifications	inches
Width: External / Internal	62 / 60
Depth: External / Internal	36 1/4 / 34
Height: External / Internal	77 1/4 / 75 5/8
Enclosure Opening:	60
Skirt Height:	3/4
Drain Rough-In (from Back Wall)	17 1/2
Drain Rough-In (from Side Wall)	31

FRAMING DIMENSIONS inches

Type	D Depth	W Width	H Height	A	B	C
Alcove	36 1/4	62 1/8	—	Box Out	31	17 1/2

