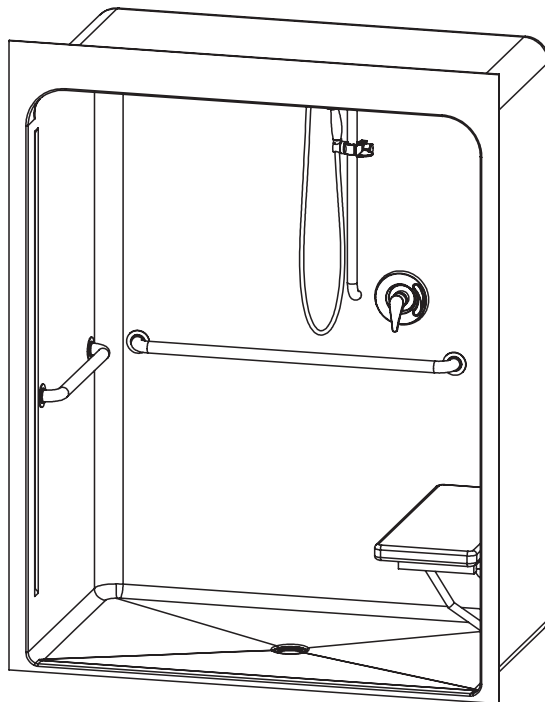


6036BFSCMA – ACCESSIBLE SHOWERS

inches

Interior: 60 x 36 x 79

Exterior: 65 x 37 x 83 ½



AQUATIC ADVANTAGE

- 6 manufacturing facilities
- Private fleet
- Centralized customer service
- Field support

COLOR & TRIM OPTIONS

Stock

Biscuit
White

**Additional custom colors available.
(Contact Customer Service)

FEATURES

- Massachusetts only
- Acrylic surface
- 1" (25 mm) skirt
- No interior threshold
- Barrier free when properly installed
- Smooth wall
- Center drain
- Integral dome
- 5-year limited warranty

OPTIONS

- Grab bars
- Molded seat
- Fold-up seat
- Hand-held shower assembly with slide bar
- Pressure balancing mixing valve
- Soap dish
- Curtain rod and/or shower curtain
- Dome light

CODE COMPLIANCE

- 521 CMR

**Code compliant when fully equipped and installed according to guidelines.



Aquatic products may be
specified as Lasco Bathware.

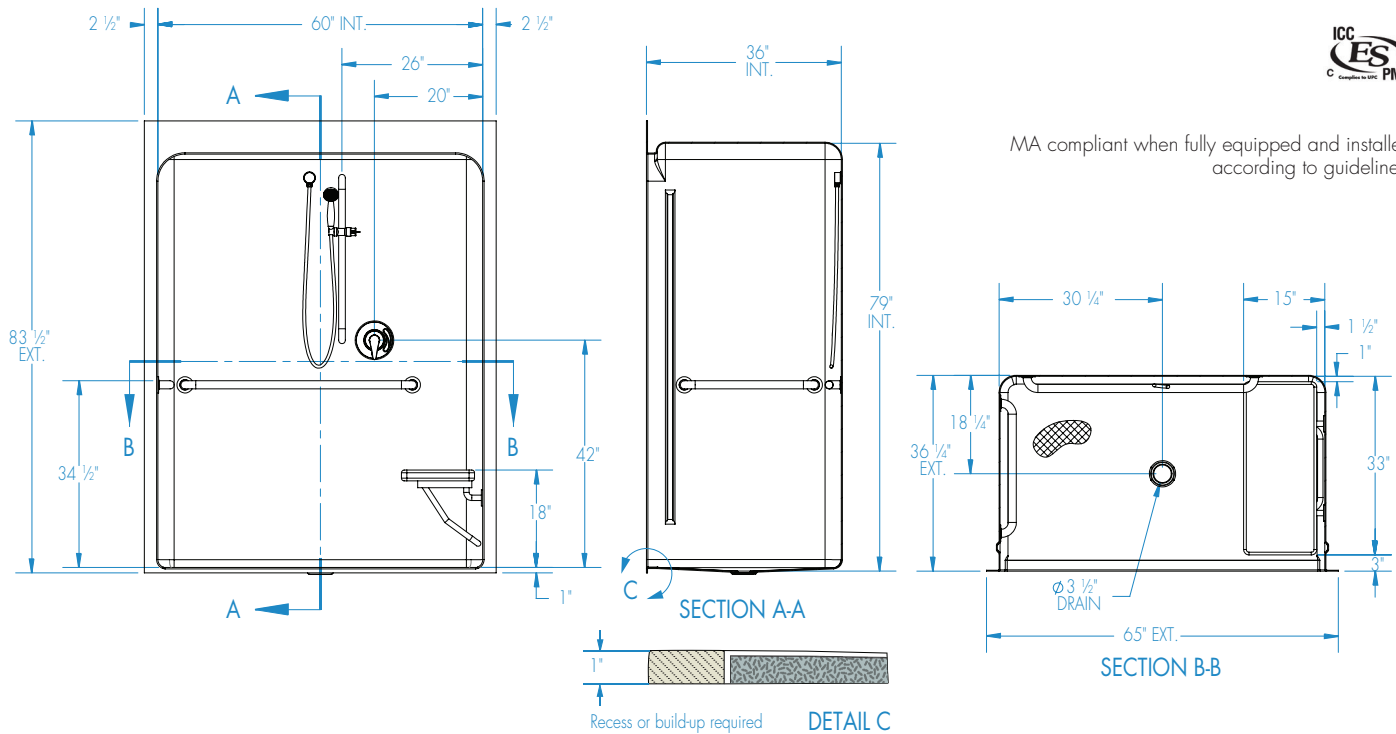


6036BFSCMA

Interior: 60 x 36 x 79
Exterior: 65 x 37 x 83 ½
inches



MA compliant when fully equipped and installed according to guidelines.



FEATURES lbs (kg) Dimensional Tolerance $\pm \frac{3}{8}$ ". Dimensions needed for site preparation should be measured from the unit. Aquatic assumes no responsibility for preparatory work.

Type and Model #	Material	Wall Finish	Pieces	Drain	Dam/Skirt Height	Net Wt.	Pkg. Wt.
Shower #6036BFSCMA	Acrylic	Smooth	1	Center	1" skirt, NO interior threshold	210	220

DIMENSIONS

Specifications	inches
Width: Overall / Net	65 / 60
Depth: Overall / Net	37 / 36
Height: Overall / Net	83 ½ / 79
Enclosure Opening:	60
Skirt Height:	1
Drain Rough-In (from Back Wall)	19
Drain Rough-In (from Side Wall)	32 ½

FRAMING DIMENSIONS inches

Type	D Depth	W Width	H Height	A	B	C
Alcove	37	65 ⅞	—	Box Out	32 ½	19

