



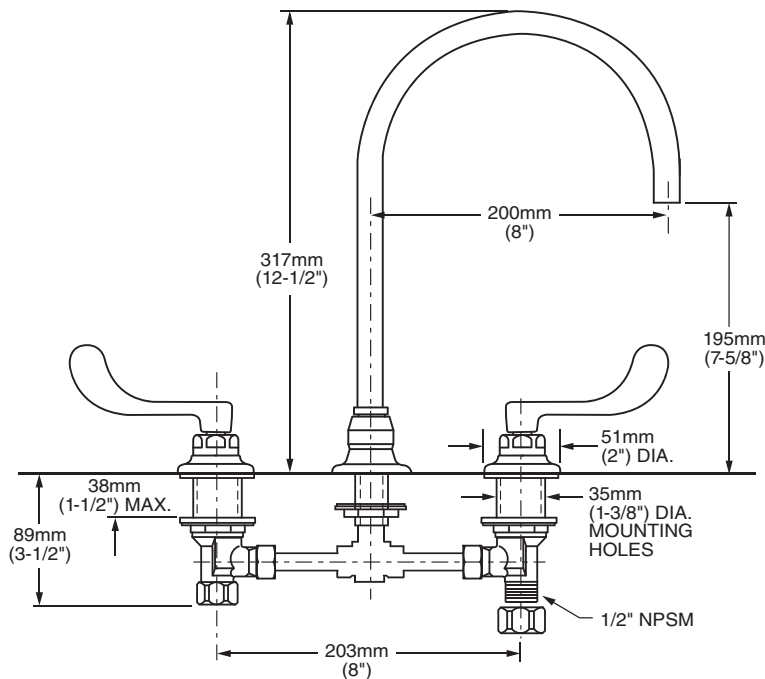
MONTERREY™ TWO-HANDLE WIDESPREAD LAVATORY FAUCET WITH LAMINAR FLOW IN BASE OF SPOUT RIGID/SWIVEL GOOSENECK SPOUT WITH 8" REACH



6540.188 Shown

MODEL NUMBER:

- 6540.188 Widespread Lavatory
1.5 gpm Pressure Compensating Laminar Flow device in base of spout. Field-Convertible rigid/swivel gooseneck spout with 8" reach. Plain spout end. Vandal-Resistant Wrist Blade Handles. Less drain and pop-up hole.



GENERAL DESCRIPTION:

Durable cast brass construction. Cast brass valve bodies with 8" rigid copper connection with compression fittings. 1/2" male threaded inlet shanks with brass coupling nuts. 1/4 turn ceramic disc valve cartridges. Field-Convertible rigid/swivel spout with 8" reach. Plain spout end. Vandal-Resistant Wrist Blade handles with blue & red color indexes. 1.5 gpm/5.7L/min. maximum flow rate.

PRODUCT FEATURES:

Laminar Flow Device in Base of Spout: Ideal for hospital applications.

Solid Brass Construction: Durable - Excellent in high use applications. Ideal for prolonged contact with water.

Ceramic Disc Valve Cartridges: Assures a lifetime of drip-free performance.

Field-Convertible Rigid/Swivel Spout: Easily converted in the field.

Lead Free: Faucet contains $\leq 0.25\%$ total lead content by weighted average.

SUGGESTED SPECIFICATION:

Two handle widespread lavatory faucet shall feature cast brass valve bodies with 8" rigid copper connection. Shall feature water-conserving 1.5 gpm/5.7L/min. pressure compensating laminar flow device in base of spout. Vandal-Resistant wrist blade handles. 1/4 turn washerless ceramic disc valve cartridges. Shall also feature field-convertible rigid/swivel spout with 8" reach and plain spout end. Fitting shall be American Standard Model # 6540.188.002.

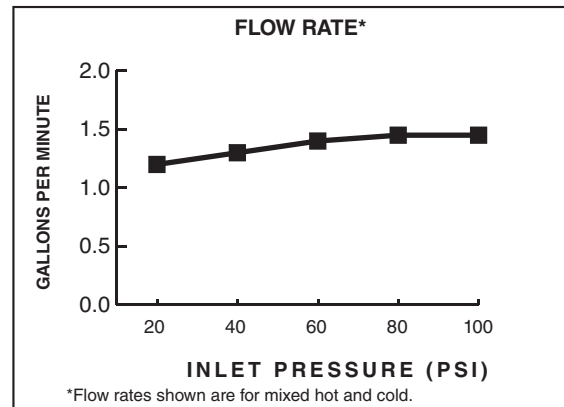


MONTERREY™ TWO-HANDLE WIDESPREAD LAVATORY FAUCET WITH LAMINAR FLOW IN BASE OF SPOUT RIGID/SWIVEL GOOSENECK SPOUT WITH 8" REACH

CODES AND STANDARDS

These products meet or exceed the following codes and standards:

ANSI 117.1
ASME A112.18.1
CSA B 125
NSF 61/Section 9 and Annex G



Product Number	Description	Finish
		Polished Chrome
		002
6540.188	Widespread Lavatory with field-convertible rigid/swivel gooseneck spout with 8" reach. 1.5 gpm/5.7L/min pressure compensating laminar flow device in base of spout. Plain spout end. Vandal-Resistant Wrist Blade Handles. Less drain and pop-up hole.	



Other Aerators Available:

Part Suffix	Description
L10	1.0 gpm (3.8 Lpm) PCA Non-Aerated Laminar Flow Outlet