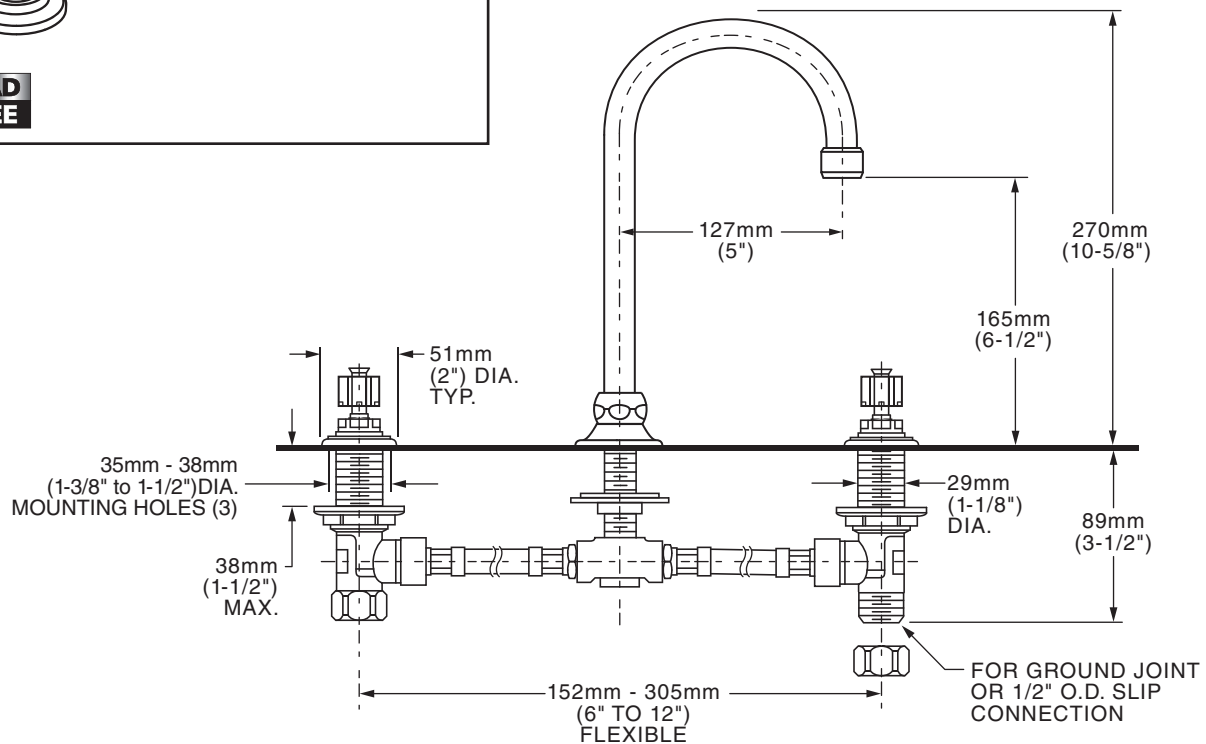




**MODEL NUMBER:**

- ☐ **7890.000 Bar/Pantry Sink Faucet**  
Gooseneck swivel spout. Less handles.

**Handles must be ordered separately.**



**GENERAL DESCRIPTION:**

Cast brass valve bodies with reinforced flexible hose connections for 6" to 12" (152mm to 305mm) installations. Amarilis 1/4 turn washerless ceramic disc valve cartridges. One-half inch male inlet shanks with brass coupling nuts and shank nuts. Brass gooseneck swivel spout. 2.2gpm/8.3L/min. maximum flow rate.

**PRODUCT FEATURES:**

**Ceramic Disc Valve Cartridges:** Assures a lifetime of drip-free performance.

**Brass Construction:** Durable - Excellent in high use applications. Ideal for prolonged contact with water.

**Lead Free:** Faucet contains  $\leq 0.25\%$  total lead content by weighted average.

**SUGGESTED SPECIFICATION:**

Two handle bar sink/pantry faucet shall feature cast brass valve bodies with reinforced flexible hose connections for 6" to 12" installations. All brass shank nuts and coupling nuts. Shall also feature 1/4 turn washerless ceramic disc valve cartridges. Faucet shall be American Standard Model # 7890.000.\_\_\_\_ and handle kit # 0000.\_\_\_\_.

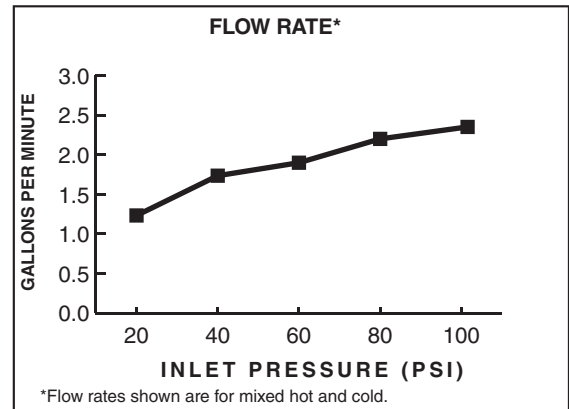


## HERITAGE/AMARILIS TWO-HANDLE PANTRY/BAR SINK FAUCET WITH BRASS GOOSENECK SPOUT

### CODES AND STANDARDS

These products meet or exceed the following codes and standards:

ASME A112.18.1  
CSA B 125  
NSF 61/Section 9 and Annex G  
NSF 372

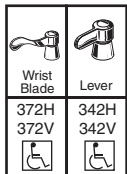


Product Number	Description	Finish Options
		Polished Chrome
		002
7890.000	Bar/Pantry Sink faucet. Less handles.	

#### Handles must be ordered separately.

To order **Less Handles** - Specify: 4 digit style number followed by three zeros and 3 digit finish number.

The above fittings will accept the following Amarilis-Series handles.



MEETS THE AMERICANS WITH DISABILITIES ACT GUIDELINES  
AND ANSI A117.1 REQUIREMENTS FOR ACCESSIBLE AND  
USABLE BUILDING FACILITIES-CHECK LOCAL CODES

#### Other Aerators Available:

Part Suffix	Description
LV15	1.5 gpm (5.7 Lpm) Vandal-Resistant PCA Non-Aerated Laminar Flow Outlet
L15	1.5 gpm (5.7 Lpm) PCA Non-Aerated Laminar Flow Outlet
V15	1.5 gpm (5.7 Lpm) Vandal-Resistant PCA Aerator
LV10	1.0 gpm (3.8 Lpm) Vandal-Resistant PCA Non-Aerated Laminar Flow Outlet
L10	1.0 gpm (3.8 Lpm) PCA Non-Aerated Laminar Flow Outlet
V10	1.0 gpm (3.8 Lpm) Vandal-Resistant PCA Aerator
V05	0.5 gpm (1.9 Lpm) Vandal-Resistant PCA Non-Aerated Spray
V035	0.35 gpm (1.3 Lpm) Vandal-Resistant PCA Non-Aerated Spray

\*PCA - Pressure Compensating

All modifications meet CALGreen Code