

WOC3018, WMS3018, WXR3018

ASSEMBLY INSTUCTIONS

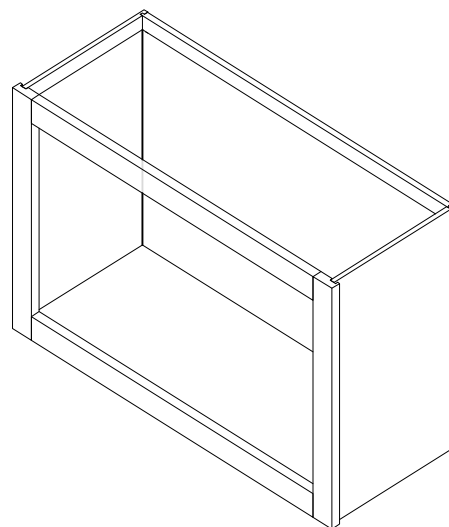
STEP 1: Joint side panel with back panel

STEP 2: Joint top panel with side panel

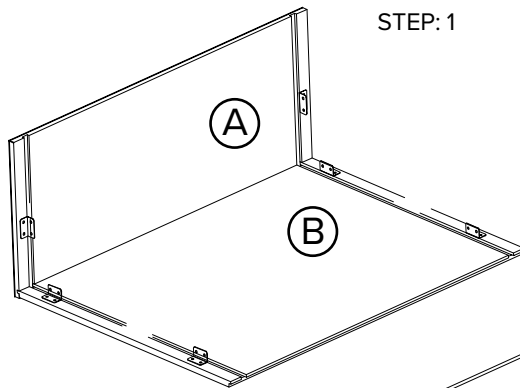
STEP 3: Joint bottom panel with side panel

STEP 4: Attach front face frame on

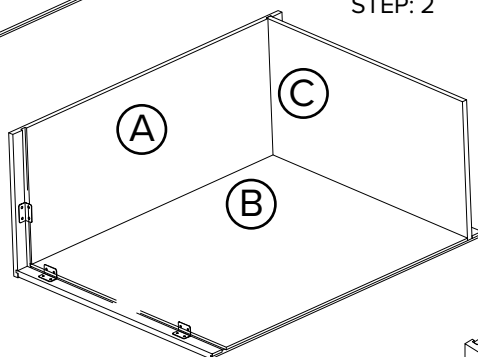
PARTS LIST		
NO.	Description	QTY
A	SIDE PANEL	2
B	BACK PANEL	1
C	TOP&BOTTOM PANEL	2
E	FACE FRAME	1



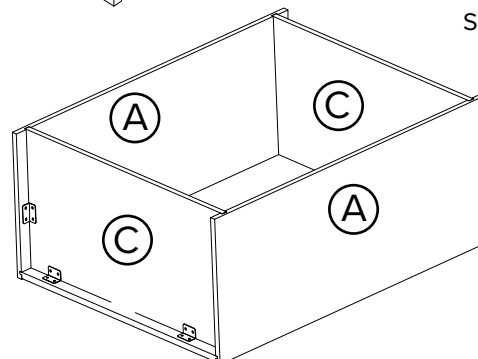
STEP: 1



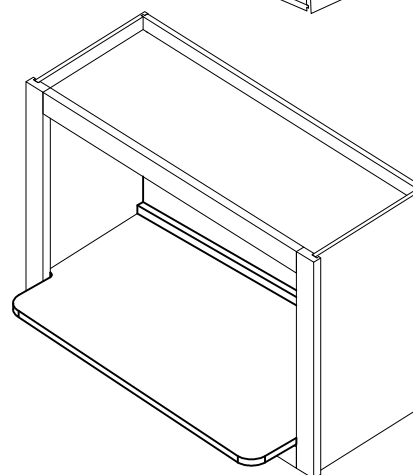
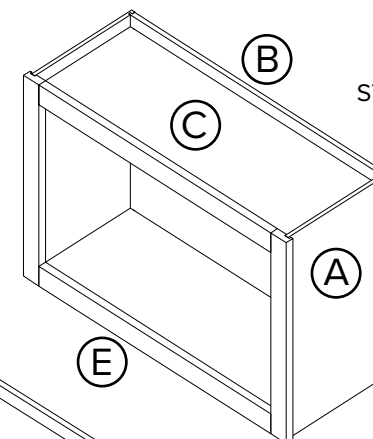
STEP: 2



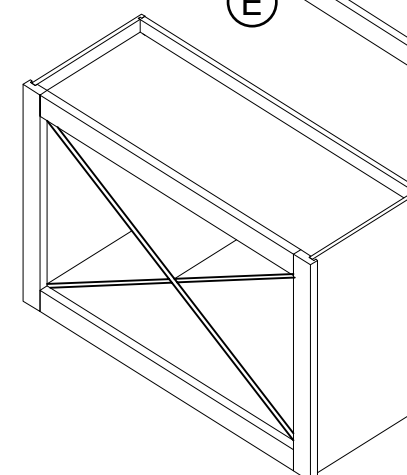
STEP: 3




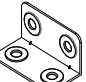

STEP: 4



WOC3018+WMSSELF



WOC3018+WXRSELF

3	9/16"ROUND HEAD SCREW 48		 9/16" round head screw
2	CLEAT	12	 Cleat
1	1"FLAT HEAD SCREW FOR CARCASS	16	 1" flat head screw
NO.	Description	QTY	PICTURE
HARDWARE LIST			