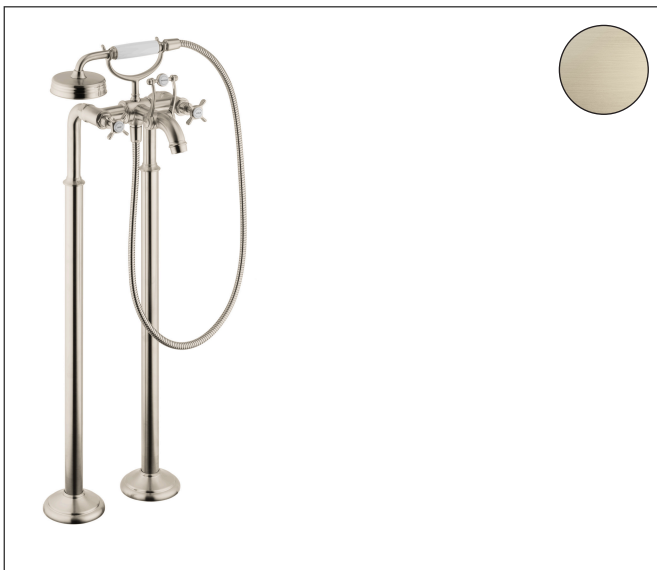


| | |
|-----------|--|
| Brand | AXOR |
| Art. Name | AXOR Montreux 2-Handle Freestanding Tub Filler Trim with Cross Handles and 1.8 GPM Handshower |
| Art. Nr. | 16562821 |
| Surface | Brushed Nickel |
| Pos. | 1 |

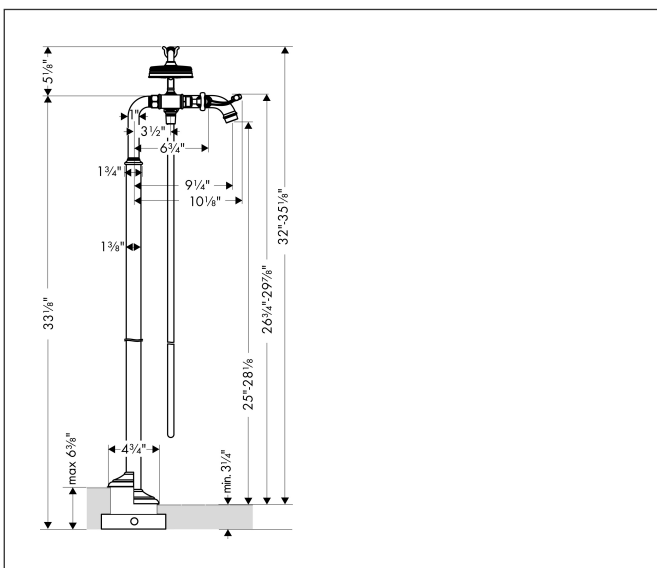
Product Picture



Features

- Spray type faucet: Aerated spray
- Spray type handshower: RainAir
- Maximum flow rate (at 3 bar): 18 l/min
- Flow rate of handshower (at 3 bar): 6.8 l/min
- Ceramic valves 90°
- Non-return valve

Drawing



Technology

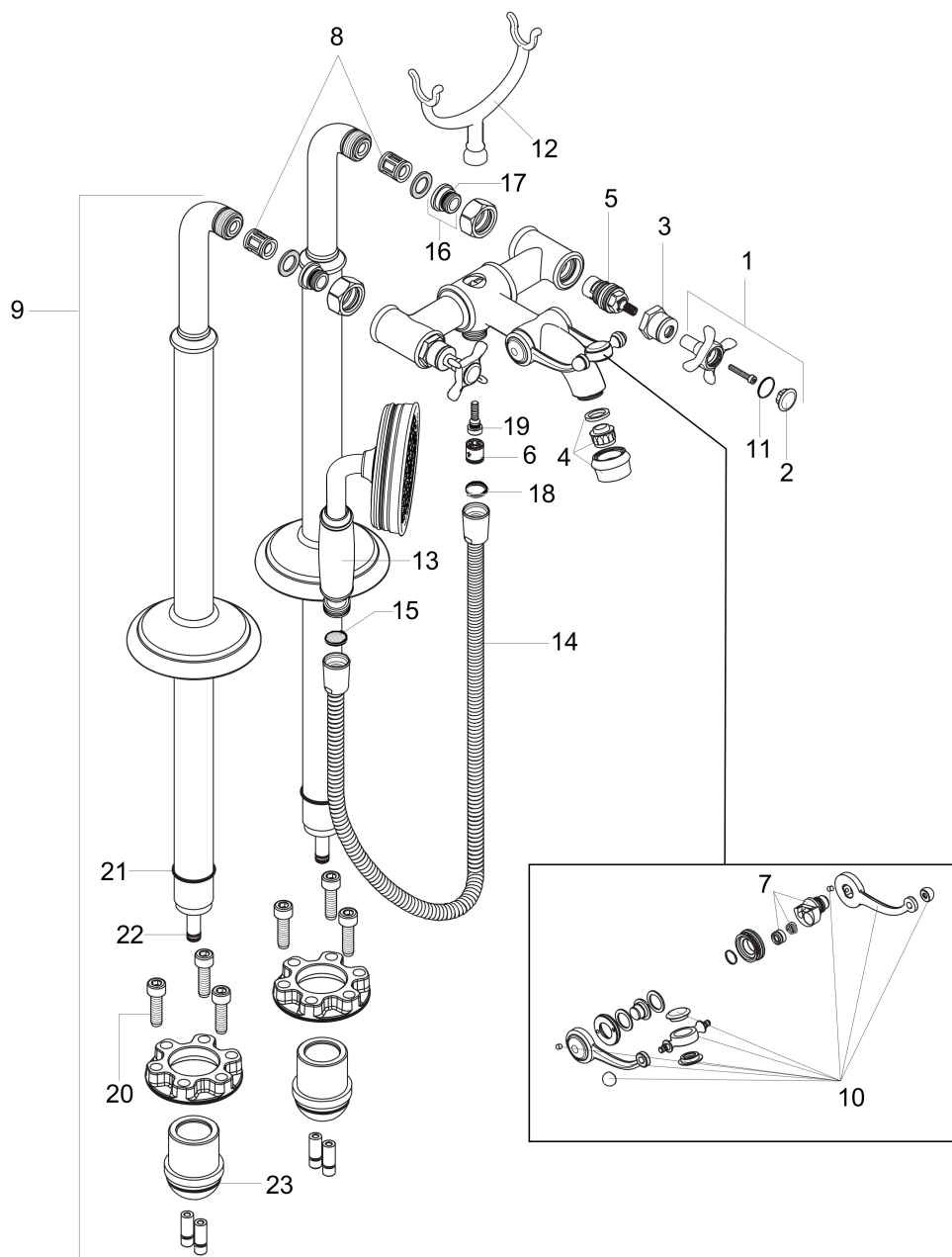


Spray Types



Brand AXOR
 Art. Name **AXOR Montreux** 2-Handle Freestanding Tub Filler Trim with Cross Handles and 1.8 GPM Handshower
 Art. Nr. 16562821
 Surface Brushed Nickel
 Pos. 1

Spare Parts Drawings for build year: >01/19



Brand AXOR
 Art. Name **AXOR Montreux** 2-Handle Freestanding Tub Filler Trim with Cross Handles and 1.8 GPM Handshower
 Art. Nr. 16562821
 Surface Brushed Nickel
 Pos. 1

Spare parts list for build year: >01/19

| Pos. | Description | Article number |
|------|---|----------------|
| 1 | handle | 16597820 |
| 2 | set of screw covers, cold / hot water / neutral | 97987000 |
| 3 | sleeve | 97993820 |
| 4 | aerator M22x1 (25 l/min) | 98575820 |
| 5 | shut off unit right closing | 94009000 |
| 6 | set of non return valves DW 15 | 94074000 |
| 7 | selector | 98591000 |
| 8 | noise reduction | 96429000 |
| 9 | pillar union | 98856820 |
| 10 | sliding gear lever | 98594820 |
| 11 | O-ring 16x2 | 98133000 |
| 12 | shower base | 98590820 |
| 13 | handshower | 04695820 |
| 14 | shower hose 1,25 m | 28112820 |
| 15 | filter packing | 94246000 |
| 16 | connecting thread | 97220000 |
| 17 | O-ring 15x2 | 98163000 |
| 18 | seal | 98058000 |
| 19 | O-ring 5x2 | 98215000 |
| 20 | hexagon socket screw M10x35 | 97670000 |
| 21 | O-ring 35x2 | 92604000 |
| 22 | O-ring 9x1,5 | 98117000 |
| 23 | O-ring 44x2,5 | 98162000 |