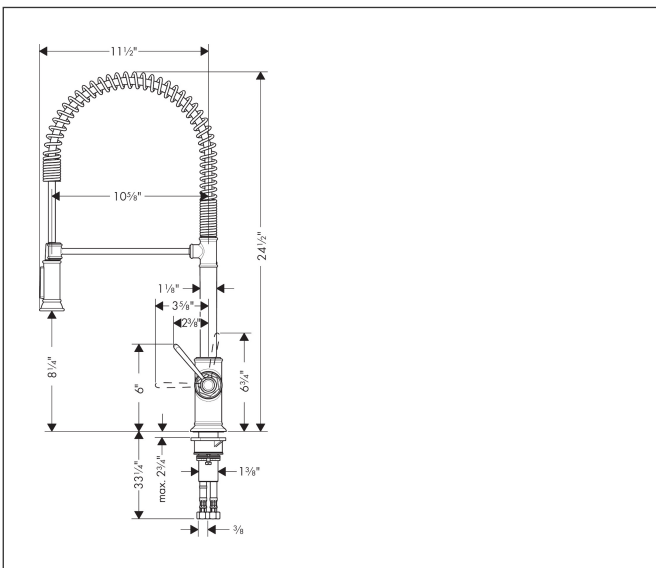


Brand AXOR
 Art. Name **AXOR Montreux** Semi-Pro Kitchen Faucet 2-Spray, 1.75 GPM
 Art. Nr. 16582801
 Surface Stainless Steel Optic
 Pos. 1

Product Picture



Drawing



Features

- Swivel range 360°
- Laminar spray and shower spray
- Lockable shower spray, spray return through pressing spray diverter
- Deck-mounted
- Maximum flow rate (at 3 bar): 6.6 l/min
- Ceramic cartridge
- G 3/8 hose connections
- Integrated non-return valve
- Single handle kitchen faucet, connection hoses, fixation set, installation manual

Technology

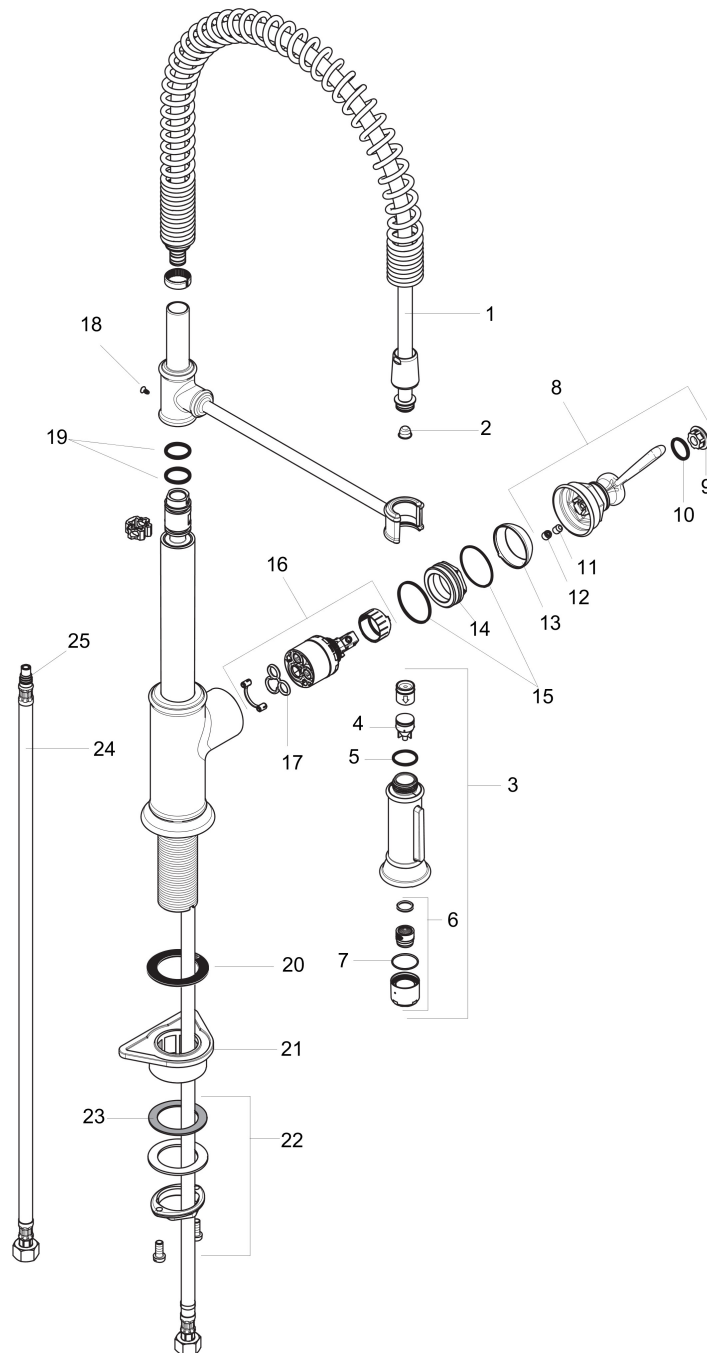


Spray Types



Brand AXOR
Art. Name **AXOR Montreux** Semi-Pro Kitchen Faucet 2-Spray, 1.75 GPM
Art. Nr. 16582801
Surface Stainless Steel Optic
Pos. 1

Spare Parts Drawings for build year: >01/18



Brand AXOR
 Art. Name **AXOR Montreux** Semi-Pro Kitchen Faucet 2-Spray, 1.75 GPM
 Art. Nr. 16582801
 Surface Stainless Steel Optic
 Pos. 1

Spare parts list for build year: >01/18

Pos.	Description	Article number
1	shower hose	97475000
2	filter	97735000
3	handspray	92967801
4	set of non return valves DW 15	97350000
5	O-ring 18x1,5	98231000
6	aerator laminar M22x1 (15 l/min)	95909000
7	O-ring 20x1	98140000
8	handle	92963800
9	cover cap	92964000
10	O-ring 16x2	98133000
11	hollow set screw M6x8	98444000
12	screw cover	96762000
13	flange	92965800
14	nut	92966000
15	O-ring 33x1,5	98164000
16	cartridge, assy	92730000
17	seal	95008000
18	screw	97662000
19	O-ring 17x2,5	98387000
20	sealing washer	97825000
21	support	97523000
22	fixing set (Ø 34)	95049000
23	lever collar	97548000
24	connection hose 35½" M8x0,75 3/8"	96316001
25	O-ring 7x1,5	98422000
a	non return valve	93218000