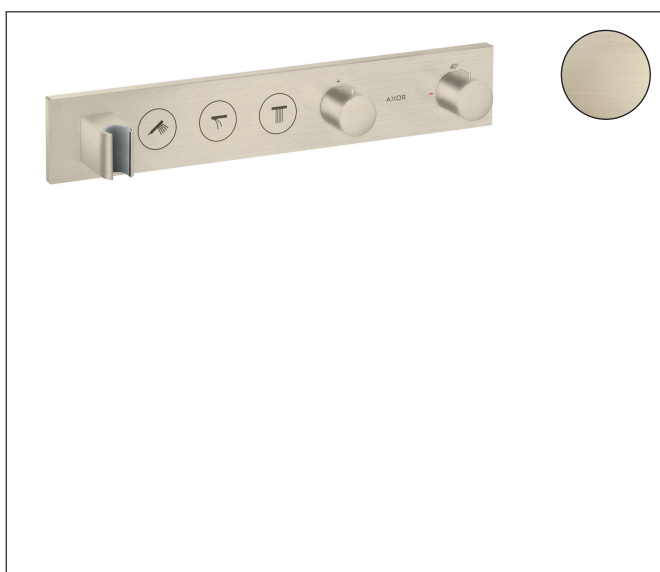


Brand AXOR
 Art. Name **AXOR ShowerSolutions** Thermostatic Module Trim Select for 3 Functions
 Art. Nr. 18356821
 Surface Brushed Nickel
 Pos. 1

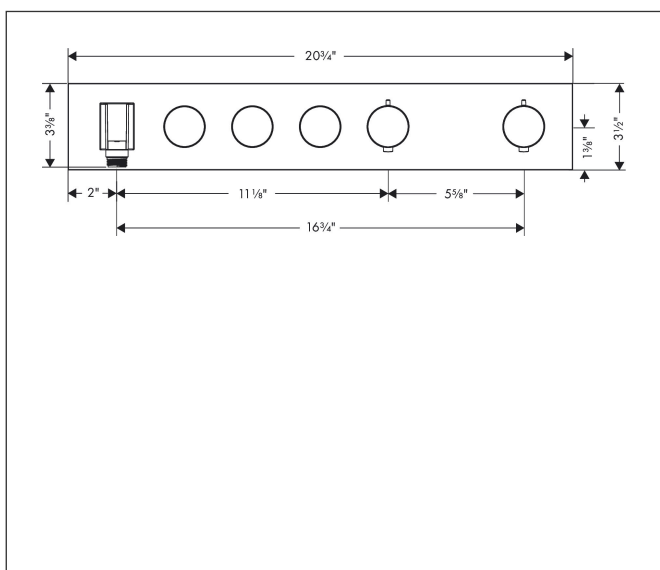
Product Picture



Features

- Consists of: thermostat module, shower holder
- Multiple outlets can be run simultaneously
- Select button on/off control for 3 functions
- Thermostat cartridge, Start/stop valve to operate the functions
- Flow rate left and right: 6.6 l/min
- Flow rate per outlet (at 3 bar): 21.9 l/min
- Safety stop at 40°C
- For shower hoses with a conical nut
- Thermostat is delivered with buttons Rain large, Waterfall, handshower

Drawing

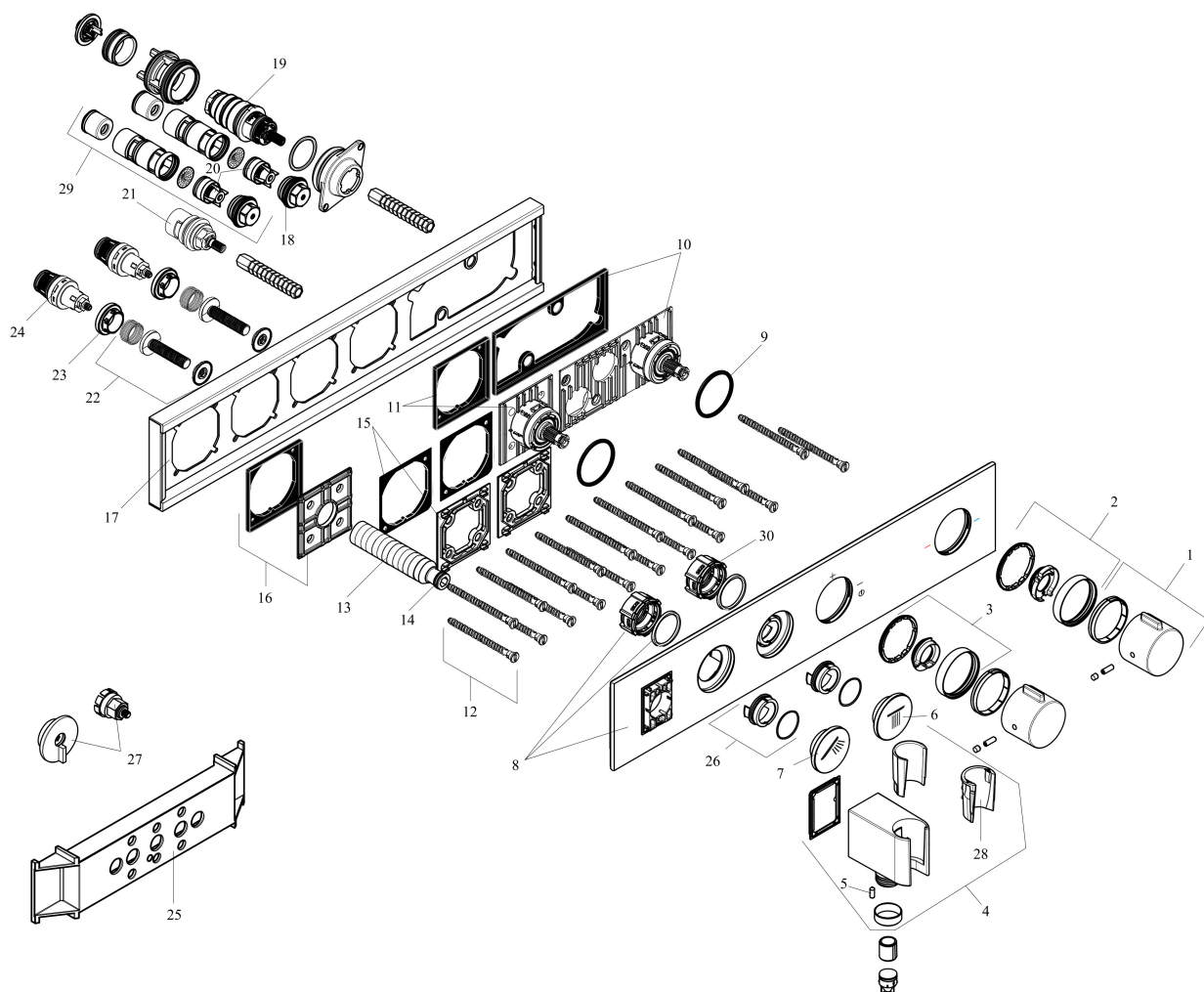


Technology



Brand AXOR
Art. Name **AXOR ShowerSolutions** Thermostatic Module Trim Select for 3 Functions
Art. Nr. 18356821
Surface Brushed Nickel
Pos. 1

Spare Parts Drawings for build year: >01/21



Brand AXOR
 Art. Name **AXOR ShowerSolutions** Thermostatic Module Trim Select for 3 Functions
 Art. Nr. 18356821
 Surface Brushed Nickel
 Pos. 1

Spare parts list for build year: >01/21

| Pos. | Description | Article number |
|------|-----------------------------------|----------------|
| 1 | handle | 93313820 |
| 2 | safety set | 93337820 |
| 3 | safety set | 93338820 |
| 4 | shower holder, assy | 93114820 |
| 5 | hollow set screw M4x8 | 97669000 |
| 6 | symbol head shower | 93308820 |
| 7 | symbol handshower | 93307820 |
| 8 | cover | 93323820 |
| 9 | O-ring 38x2,5 | 98198000 |
| 10 | adapter for handle | 93109000 |
| 11 | adapter for handle | 93315000 |
| 12 | mounting kit | 93102000 |
| 13 | connecting thread G $\frac{1}{2}$ | 98933000 |
| 14 | O-ring 11x2 | 98127000 |
| 15 | support element | 93330000 |
| 16 | support element | 93314000 |
| 17 | escutcheon | 93327000 |
| 18 | O-ring 20x2 | 98165000 |
| 19 | thermostat cartridge | 98282000 |
| 20 | non return valve | 96655000 |
| 21 | shut off unit | 98536000 |
| 22 | Select-adapter | 93103000 |
| 23 | nut | 98368000 |
| 24 | shut off unit | 95758000 |
| 25 | fit-up aid | 92540000 |
| 26 | adapter for symbol | 93398000 |
| 27 | fit-up aid | 93487000 |
| 28 | guide (conical) | 94163000 |
| 29 | service unit | 93406000 |
| a | symbol tub | 93335820 |
| b | symbol body shower | 93334820 |
| c | symbol Flood jet | 93309820 |
| d | symbol Mono | 93310820 |
| e | symbol PowderRain inside | 93311820 |

Brand AXOR
Art. Name **AXOR ShowerSolutions** Thermostatic Module Trim Select for 3 Functions
Art. Nr. 18356821
Surface Brushed Nickel
Pos. 1

Spare parts list for build year: >01/21

| Pos. | Description | Article number |
|------|---------------------------|----------------|
| f | symbol PowderRain outside | 93312820 |
| g | symbol Whirl | 93413820 |