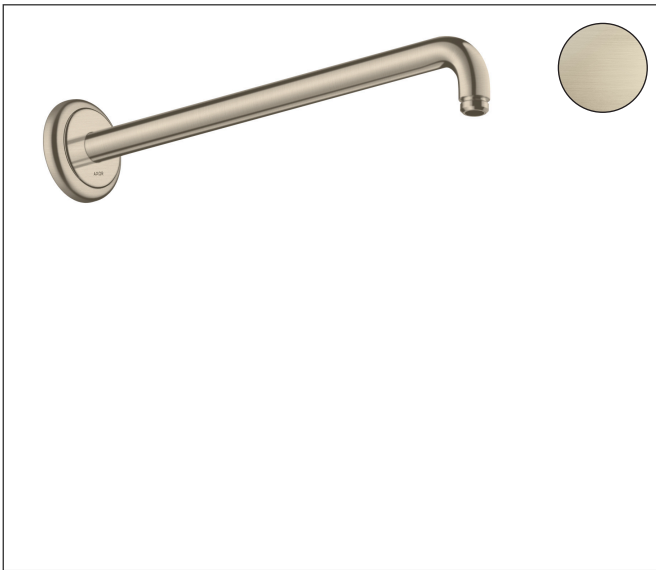


Brand AXOR
Art. Name **AXOR Montreux** Showerarm 15"
Art. Nr. 04746820
Surface Brushed Nickel
Pos. 1

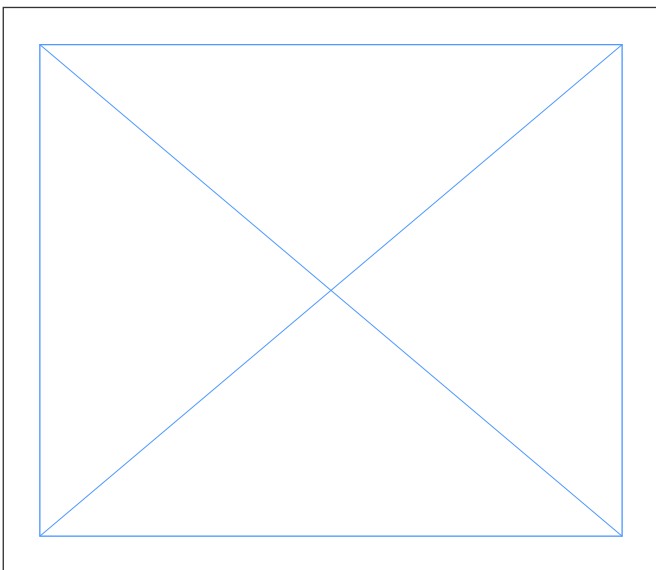
Product Picture



Features

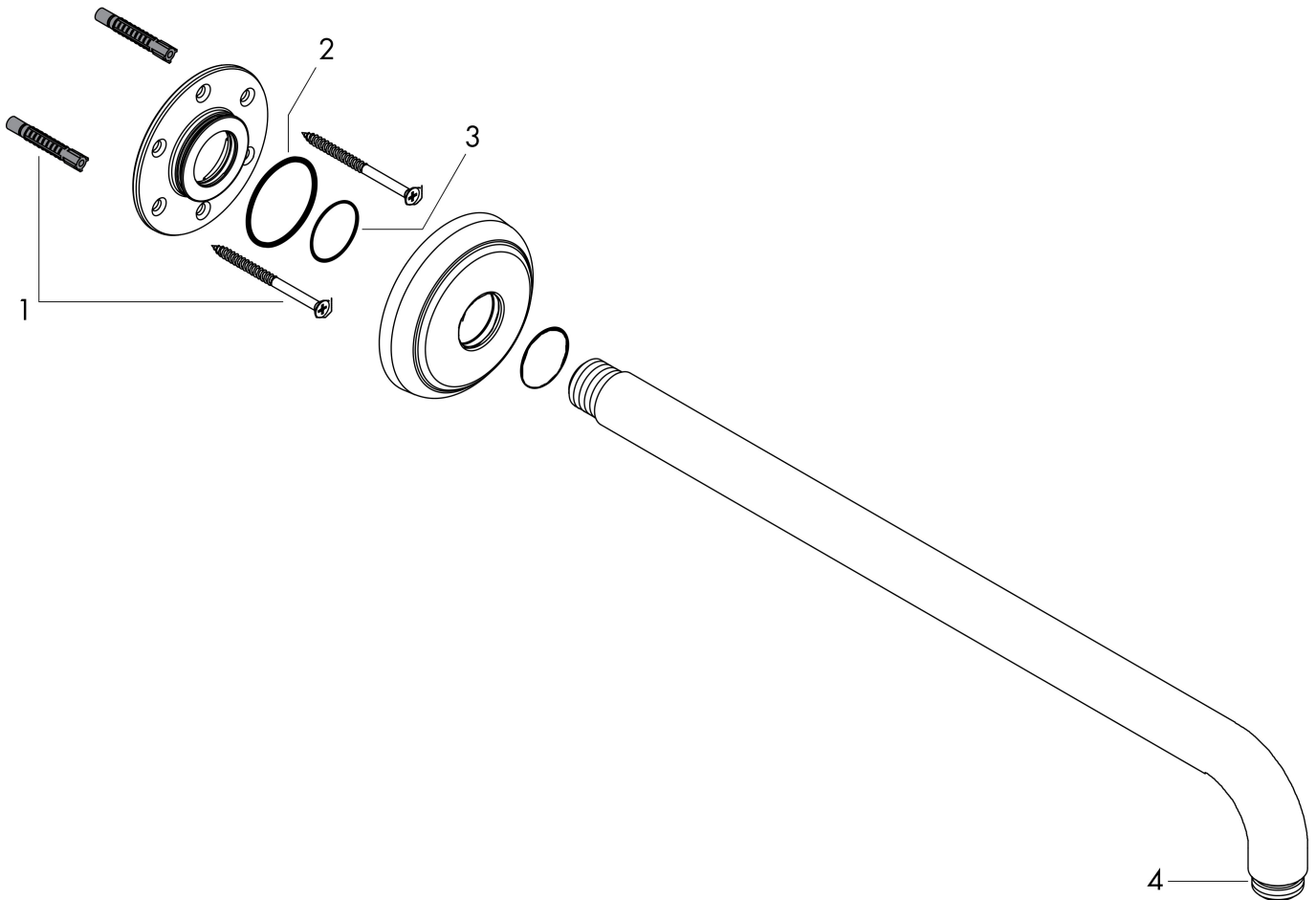
- Length: 389 mm
- Solid brass
- Version: 90° angle
- Connection type: 1/2" NPT
- Escutcheon, mounting plate

Drawing



Brand AXOR
Art. Name **AXOR Montreux** Showerarm 15"
Art. Nr. 04746820
Surface Brushed Nickel
Pos. 1

Spare Parts Drawings for build year: >01/18



Brand AXOR
Art. Name **AXOR Montreux** Showerarm 15"
Art. Nr. 04746820
Surface Brushed Nickel
Pos. 1

Spare parts list for build year: >01/18

Pos.	Description	Article number
1	mounting set	40916000
2	O-ring 30x2,5	98151000
3	O-ring 24x2	98388000
4	O-ring 16x2	98133000