



RESIDENTIAL PARAMONT™ PLASTIC TOILET SEAT

MODEL #

COLOR #

480CPT

DESCRIPTION:

Closed front with cover, round/elongated, heavy-weight, injection molded solid plastic toilet seat. Features four large molded-in bumpers, Chrome hinges with non-corrosive 300 Series stainless steel posts and pintles and STA-TITE® Commercial Fastening System™. This seat complies with IAPMO/ANSI Z124.5-2013 Plastic Toilet Seats as a class Commercial Heavy Duty.

SPECIFICATIONS:

Size:	Round/Elongated
Material:	Plastic
Style:	Closed Front with Cover
Bumpers:	Four
Hinges:	Chrome
Fastening System:	STA-TITE® Commercial Fastening System™

FEATURES:

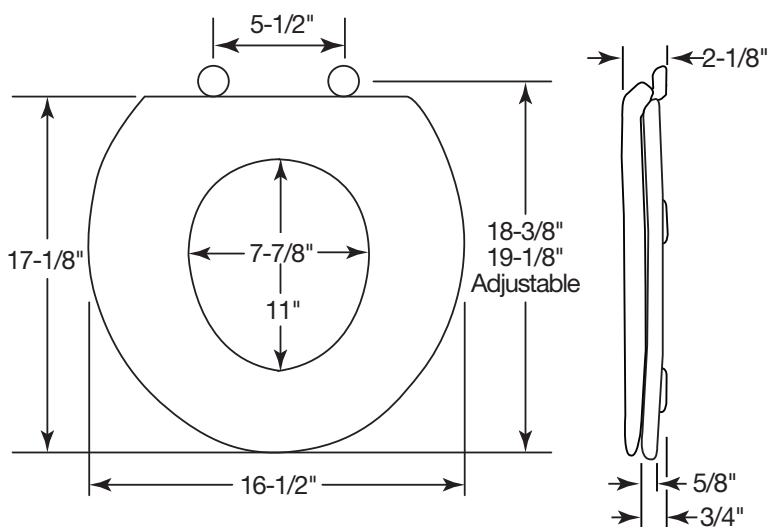
STA-TITE® Commercial Fastening System™

2-Position Hinges Fit Round or Elongated Bowls

Oversized for Comfort

Non-Corrosive 300 Series Stainless Steel Posts and Pintles

DIMENSIONS:



STA-TITE® COMMERCIAL
FASTENING SYSTEM™



ADJUSTABLE HINGES TO
FIT ROUND OR
ELONGATED BOWLS



Church Seats, Sheboygan Falls, WI 53085
www.ToiletSeats.com

Phone: 800-233-7328 Fax: 800-292-3647
©2014 0B7082225 REVA