

### FEATURED MODEL

441760 Pull-Out with Dual Spray, STAINLESS STEEL

### ADDITIONAL MODELS

441759 Pull-Out with Dual Spray, CHROME

### FEATURES

- Button activated dual spray
- Solid brass body and pull out spray
- Ceramic disk cartridge
- Extra long supply lines
- 2.2 GPM flow rate
- Installation in a 1-3/8" hole
- \* Stainless steel is a color co-ordinate and is not actually made of or in stainless steel
- 180 degree spout swivel
- 2-1/4" maximum deck thickness

### OPTIONAL ACCESSORIES

Napa Soap Dispenser: 441756 (Stainless Steel)

### CODE/STANDARDS COMPLIANCE

ASME A112.18.1-2011  
NSF 61 certified  
NSF 61 ANEX G low lead requirements  
CMR 248 - MA

AB1953 Lead Free

### WARRANTY

BLANCO'S kitchen and bar faucets feature a LIMITED LIFETIME WARRANTY to be free of all manufacturing defects under normal use. See our complete warranty for details.

While BLANCO endeavors to provide accurate information, all dimensions are nominal, cannot be guaranteed, and are subject to change or cancellation. BLANCO assumes no responsibility for use of superseded or voided specifications.

### JOB INFORMATION

Job Name: \_\_\_\_\_

Contact: \_\_\_\_\_

Date Specified: \_\_\_\_\_

Specifier: \_\_\_\_\_

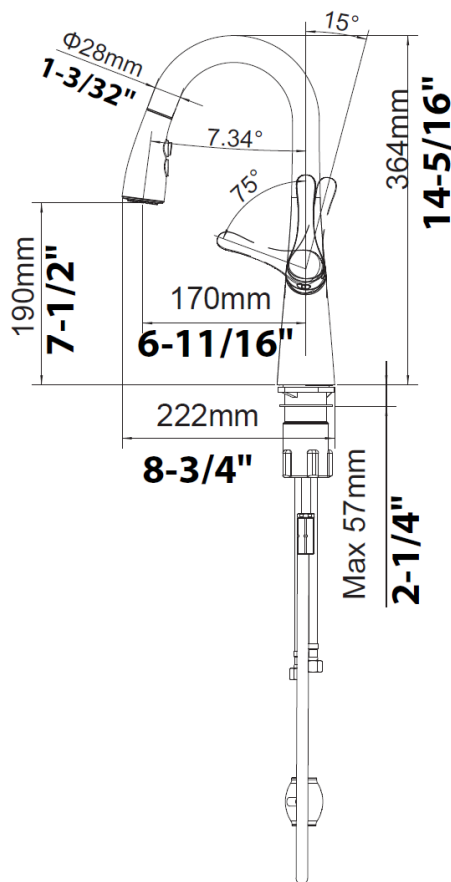
Contractor: \_\_\_\_\_



Model 441759 shown

### NOMINAL DIMENSIONS

REACH	SPOUT HEIGHT	FAUCET HEIGHT
8-11/16"	7-1/2"	14-5/16"



See next page for exploded parts drawing and parts list.

**BLANCO AMERICA**

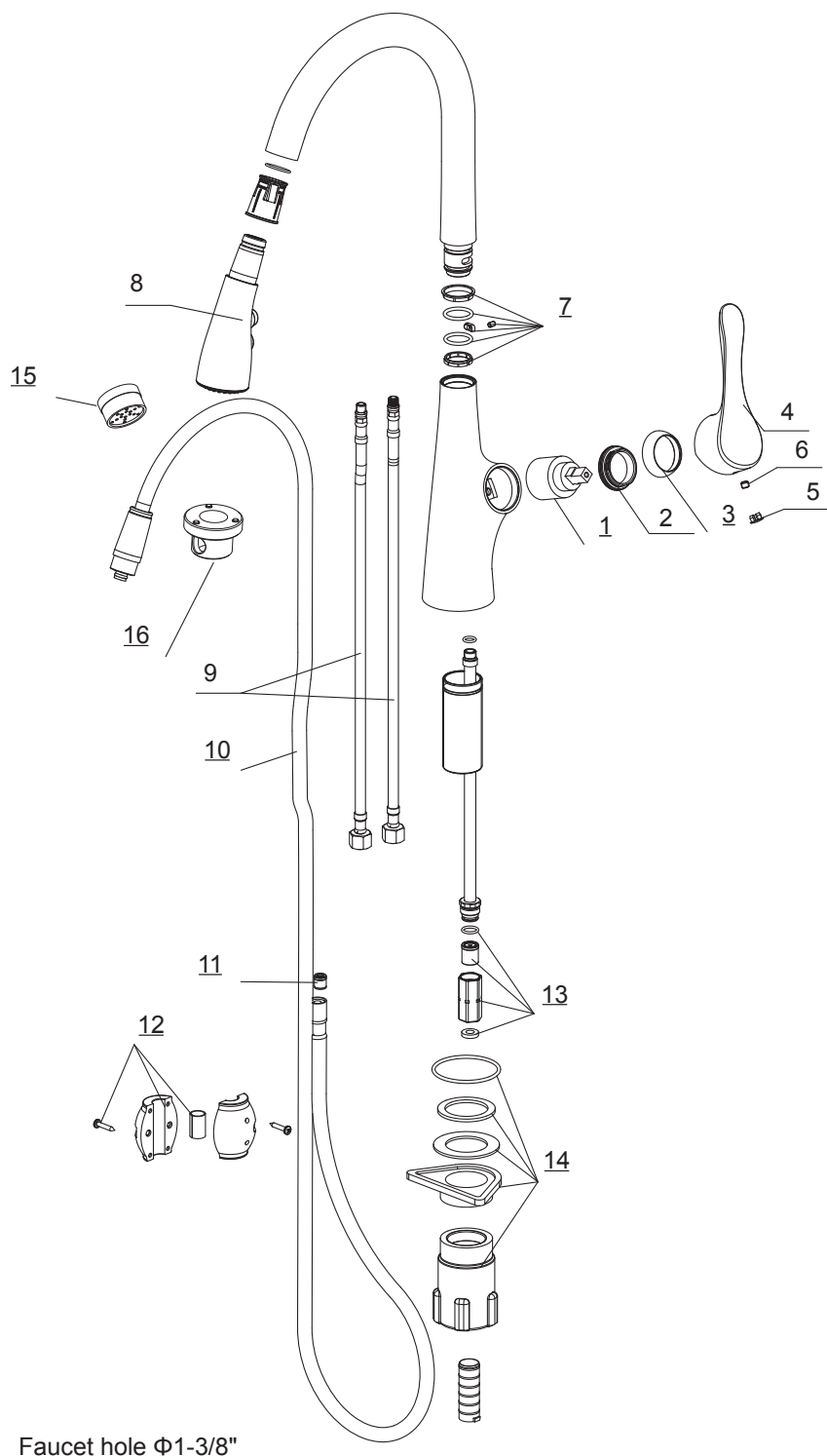
800.451.5782

www.blancoamerica.com

© 2014 BLANCO AMERICA

9/14

SPEC-001



### REPAIR PART GUIDE

Num.	Description	Part #
1	Cartridge	441545
2	Cartridge lock nut	441544
3	Cartridge cap - Chrome Cartridge cap - Stainless	441557 441558
4	Handle - Chrome Handle - Stainless	441559 441560
5	Screw cap - Chrome Screw cap - Stainless	441540 441573
6	Handle screw	441539
7	Set of O-rings and Screw	441561
8	Handspray - Chrome Handspray - Stainless	441568 441569
9	Supply Lines	441566
10	Spray Hose	441574
11	Check valve	441555
12	Weight	441556
13	Check valve w/flow restrictor 2.2GPM Check valve w/flow restrictor 1.8GPM	441572 441570
14	Mounting Kit	441548
15	Aerator	442083
16	Aerator Tool	441957

### Need to Change a Faucet Cartridge?



Scan this QR code  
to see our how-to video

For faucet technical support or questions,  
please e-mail us at [faucets@blancoamerica.com](mailto:faucets@blancoamerica.com)