



**SINK SPECIFICATIONS**  
Premium Series  
BLANCOMAGNUM™ LARGE SINGLE BOWL WITH APRON Undermount  
**Model 501-113-A**

**FEATURED MODEL**

501-113-A 12" bowl depth

**ADDITIONAL MODELS**

501-113-AT With apron and towel bar, 12" bowl depth

**FEATURES**

- 18 gauge, 304 series stainless steel (16 gauge Apron)
- 18/8 chrome/nickel content
- Long-lasting, easy-to-clean, satin finish
- 4 diagonal drain grooves channel water directly to center drain

**OPTIONAL ACCESSORIES**

Sink Grid: 501-913

Colander: 215-651

**WARRANTY**

Blanco America's BLANCOMAGNUM™ Series sinks feature a "NO HASSLE" LIMITED LIFETIME WARRANTY to be free of all manufacturing defects under normal use. See our complete warranty for details.

While Blanco America endeavors to provide accurate information, all dimensions are nominal, cannot be guaranteed, and are subject to change or cancellation. Blanco America assumes no responsibility for use of superseded or voided specifications.

**PRODUCT SPECIFICATION**

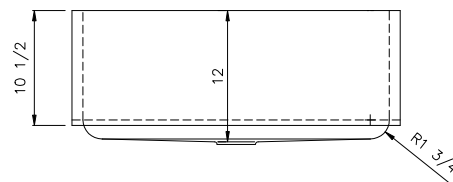
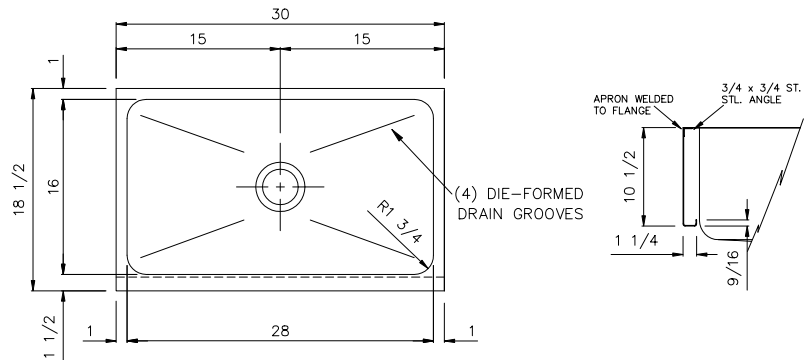
Undermount sink to be specialty single bowl design, 30" in length and 18-1/2" in front-to-back depth. Sink to be made from 18 gauge, 304 series stainless steel, with 18/8 chrome/nickel content and satin finish. Apron to be 16 gauge stainless steel. Sink to feature center drain placement with 4 diagonal drain grooves. Sink to be Blanco Model 501-113-A, with bowl depth of 12".



MODEL 501-113-A

**NOMINAL DIMENSIONS**

MODEL	OVERALL	BOWL DEPTH	DRAIN DIAMETER
501-113-A	30 x 18-1/2	12	3-1/2



**JOB INFORMATION**

Job Name: \_\_\_\_\_

Contact: \_\_\_\_\_

Date Specified: \_\_\_\_\_

Specifier: \_\_\_\_\_

Contractor: \_\_\_\_\_

**BLANCO AMERICA**  
800.451.5782  
www.blancoamerica.com

© 2006 BLANCO AMERICA  
05/06 SPEC-003