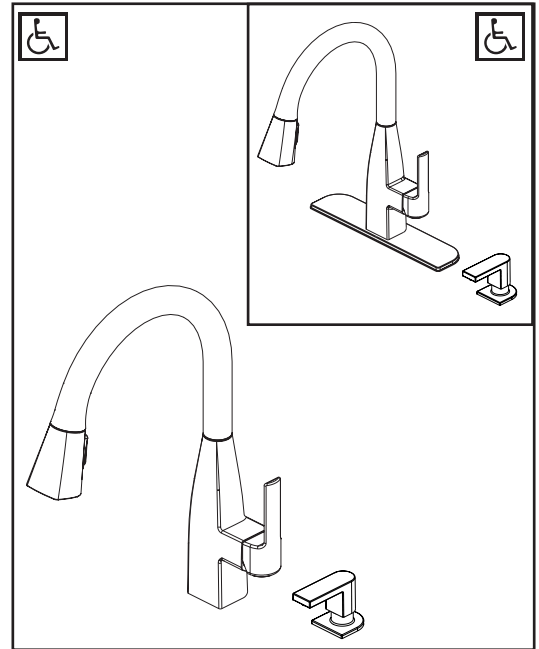
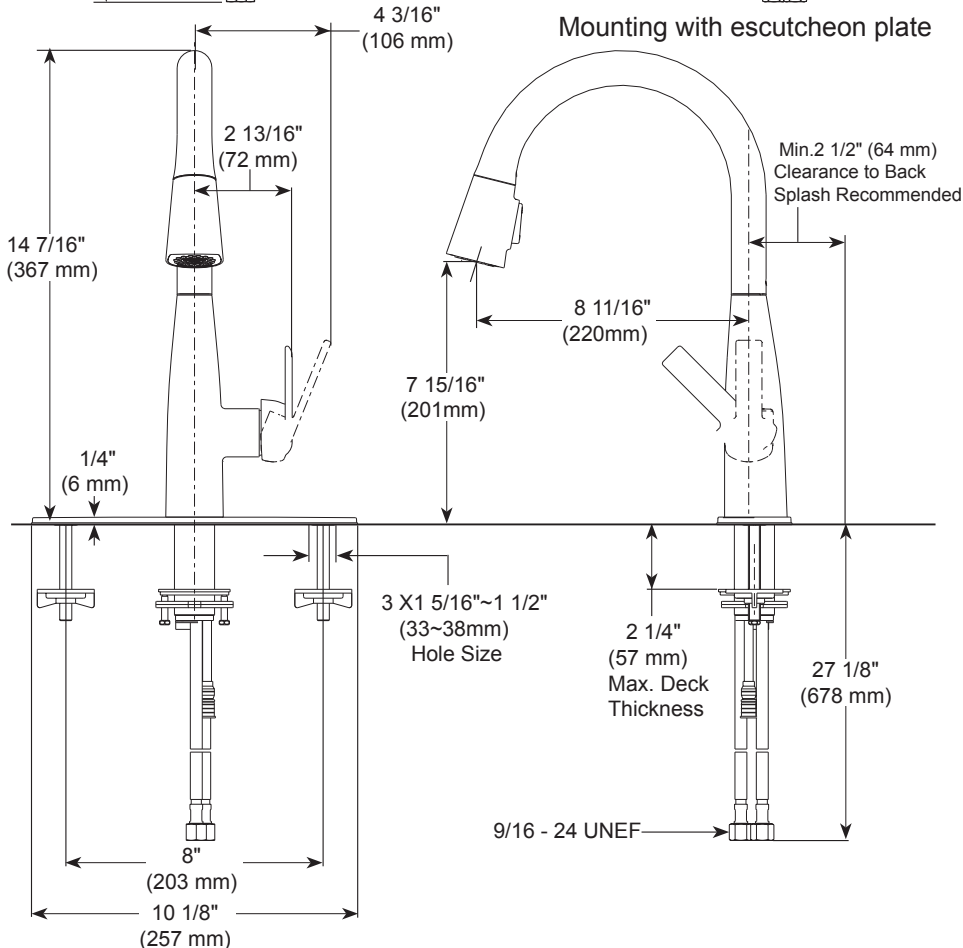
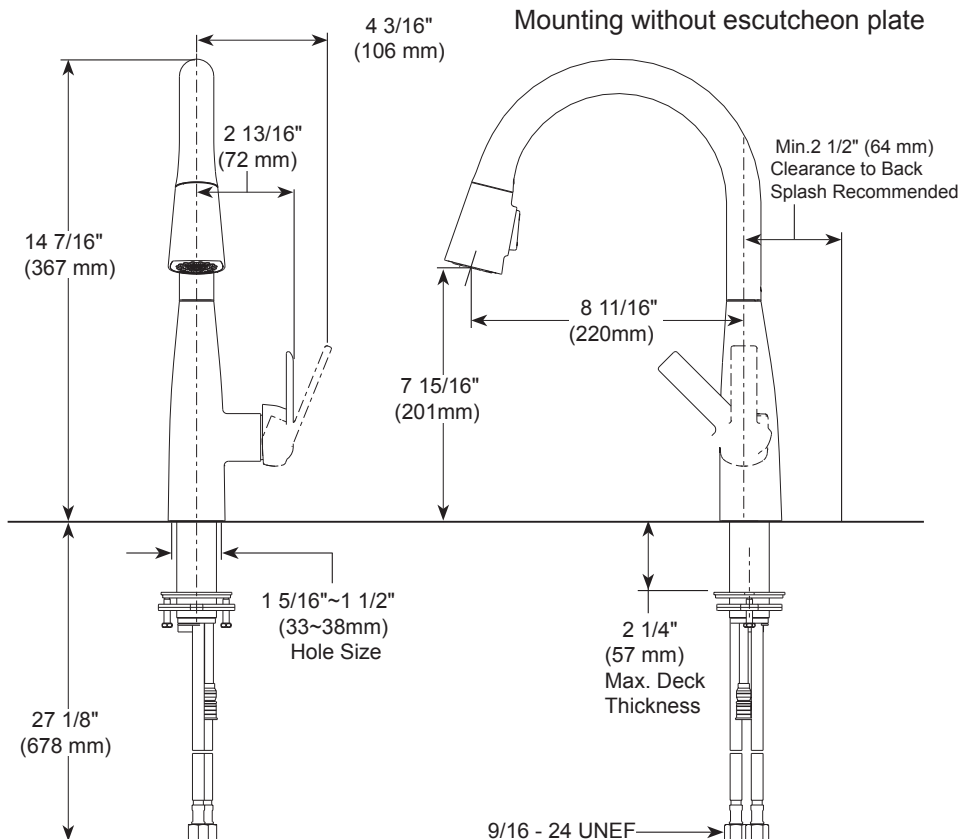


PEERLESS®

P7919LF▲



KITCHEN FAUCETS

■ Single handle pull-down

STANDARD SPECIFICATIONS:

- Maximum 1.5 gpm @ 60 psi, 5.7 L/min @ 414 kPa
- One, two, three, four hole mount options (escutcheon and soap dispenser optional, sold separately)
- Two-function wand; aerated stream or spray
- Dual integral check valves in sprayer
- ceramic cartridge
- Spout rotates 360°
- Red/Blue indicator markings
- Polymer braided flexible supply hose with 9/16 - 24 UNEF thread connection - 27 1/8" (678 mm) long.

WARRANTY

- Lifetime limited warranty on parts (other than electronic parts and batteries) and finishes; or, for commercial users, for 5 years from the date of purchase.
- 5 year limited warranty on electronic parts (other than batteries); or for commercial users, for 1 year from the date of purchase. No warranty is provided on batteries.

COMPLIES WITH:

- ASME A112.18.1 / CSA B125.1
Indicates compliance to
ICC/ANSI A117.1 - Valve control only
- Verified compliant with .25% weighted average Pb content regulations

▲ Designate proper finish suffix

PSP-K-P7919LF Rev B