

## FEATURES

- Double washbasins made of pressure-cast fireclay.
- Cata-glaze, lifetime treatment. A total bacteria-proof barrier.
- Install wall-hung, sit-on a countertop or on base cabinet.
- 0 up to 3 faucet holes on each washbasin. Must specify number of holes and hole position.
- ADA compliant when installed to the specific requirements of these regulations.

## OPTIONS

- 5P12VP Front Towel Rail constructed of brass with chrome finish. L45.28"

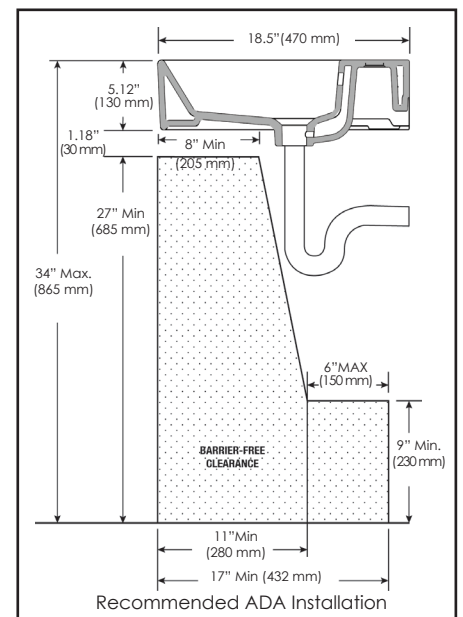
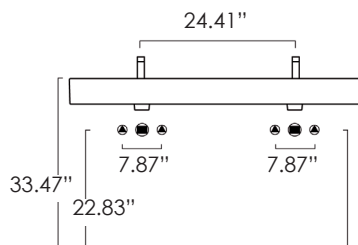
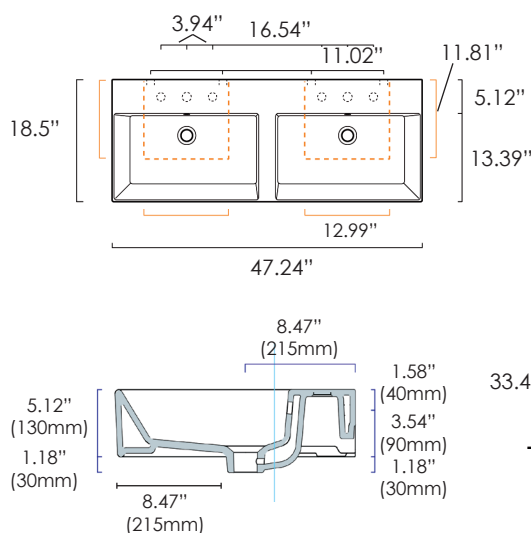
**SIZE:** W47.24" x D18.5" x H6.3"

**SHIP WEIGHT:** 77.16 lbs.

## To Be Specified:

### Model No.

<input type="checkbox"/>	112VPD00	White
--------------------------	----------	-------



**Compliance Certification** - Meets or Exceeds the Following Specifications:



**Meets the Americans with Disabilities Act Guidelines and ANSI A117.1 - Accessible and Usable Buildings and Facilities - Check Local Codes.** Top of front rim mounted 864mm (34") from finished floor.