



a Geberit company

2100 South Clearwater Drive
Des Plaines, IL 60018
Phone: 847-803-5000
Fax: 847-803-5454
www.chicagofaucets.com

FOR TECHNICAL ASSISTANCE
1-800-TEC-TRUE (1-800-832-8783)

REPAIR PARTS

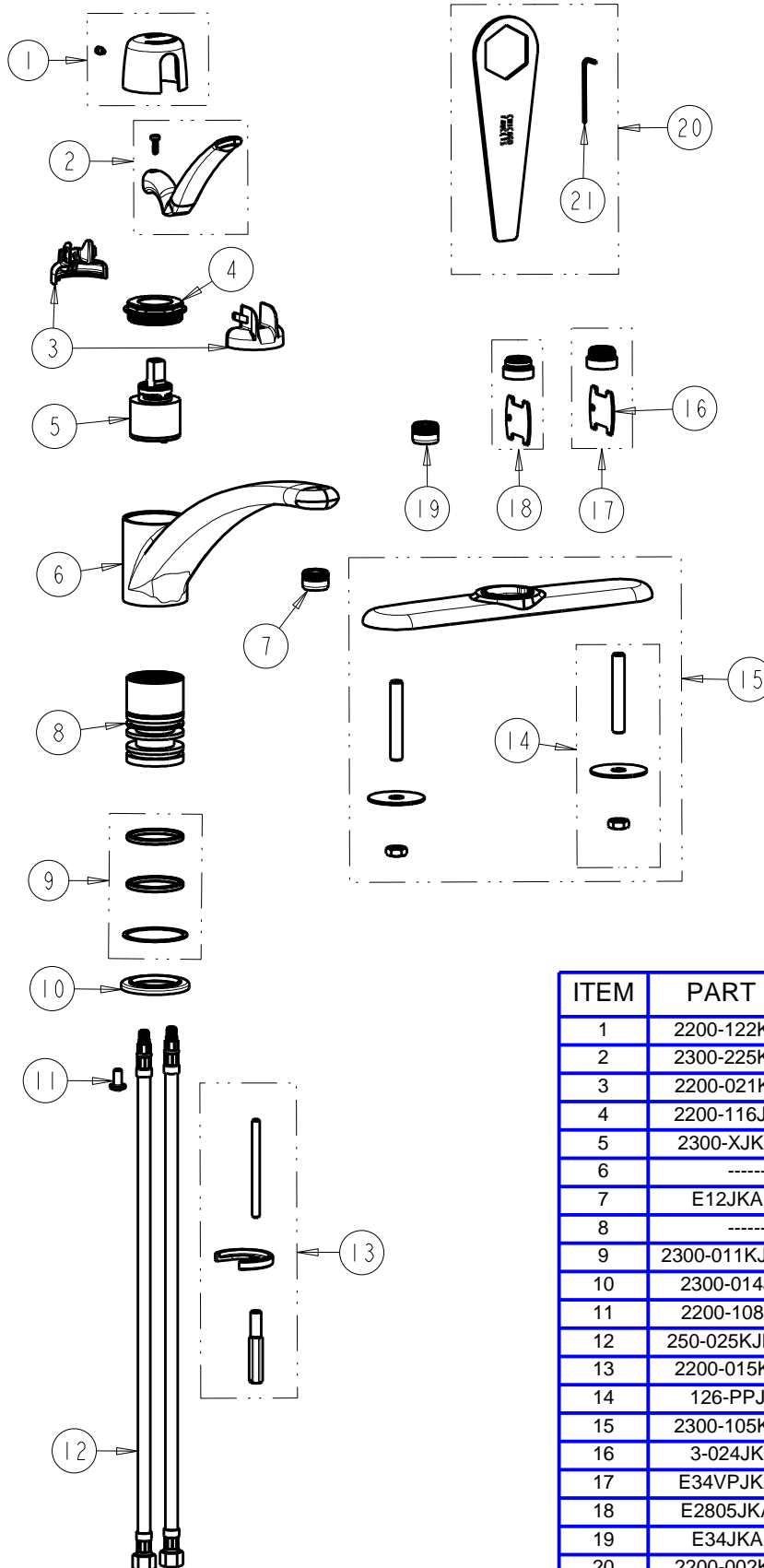
BY: JAR DATE: 10-31-13
CHK: REV:

FITTING NO.

2300-SERIES

SUBMITTED MODEL NO.

ITEM NO.



ITEM	PART NO.	DESCRIPTION
1	2200-122KJKCP	CAP AND SCREW ASSEMBLY
2	2300-225KJKCP	LEVER HANDLE, 4-5/8"
3	2200-021KJKNF	CARTRIDGE SPIN CAP ASSEMBLY
4	2200-116JKRCF	NUT, HOLDDOWN
5	2300-XJKABNF	40 mm SINGLE LEVER CARTRIDGE
6	-----	SPOUT
7	E12JKABCP	OUTLET, AERATOR 2.2 GPM
8	-----	BODY, HUB, KITCHEN-L/SPRAY
9	2300-011KJKABNF	QUAD RINGS & SLIP WASHER
10	2300-014JKCP	FLANGE, BODY
11	2200-108JKNF	SCREW, 1/4-20 UNC X 1/2 PHMS, 1
12	250-025KJKABNF	HOSE, SS BRAIDED 5/16-24 X 3/8
13	2200-015KJKNF	NUT, MOUNTING ASSEMBLY
14	126-PPJKNF	PRE-PACK, MOUNTING HARDWARE
15	2300-105KJKCP	8" COVER PLATE W/STUD MOUNT
16	3-024JKRCF	KEY, VP
17	E34VPJKABCP	OUTLET, AERATOR w/ VP KEY 1.5 GPM
18	E2805JKABCP	OUTLET, VP SPRAY w/KEY 0.5 GPM
19	E34JKABCP	OUTLET, AERATOR 1.5 GPM
20	2200-002KJKNF	WRENCH & HEX KEY
21	665-505JKNF	3/32" HEX KEY