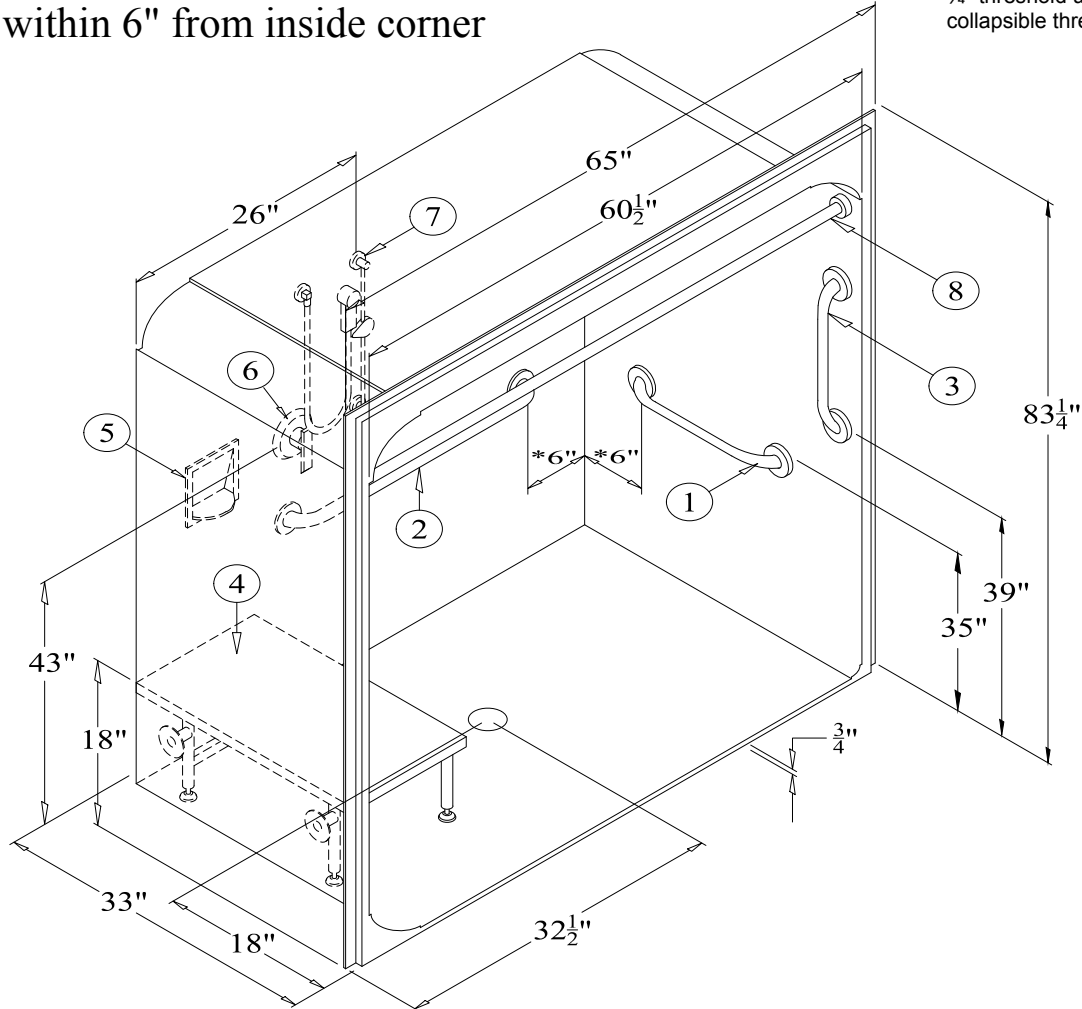


Right Hand Version (AN6533RBF34) Shown

*Grab Bars are within 6" from inside corner

*We recommend all units with a 3/4" threshold use the available collapsible threshold.



AN6533LBF34 or AN6533RBF34

60" (overall width 65") Acrylic Barrier-Free Shower w/ 3/4" [19mm] Threshold,
Molded Dome, & Center Drain

RECOMMENDED ACCESSORIES

- | | |
|------------------------------|--|
| 1. #5024 GRAB BAR | 7. #ZHGB-24 HAND HELD SHWR |
| 2. #5036 GRAB BAR | 8. #CR-59 1/4 CURTAIN ROD |
| 3. #5018 GRAB BAR | 9. CURTAIN (Not Shown) |
| 4. #400-29"-SDL FOLDING SEAT | 10. Collapsible Threshold Kit 2.5a (Not Shown) |
| 5. #660 SOAP DISH | 11. BRASS DRAIN (Not Shown) |
| 6. #CH-SSMV-1 MIXING VALVE | |

Clarion
BATHWARE
44 Amsler Ave.
Shippensburg, PA 16254

Phone: (814) 226-5374
Toll Free: (800) 576-9228
Fax: (814) 226-0730
www.clarionbathware.com

Signatures For Approval:

Customer: _____
Arch./Engr: _____

Date: _____

Quote #: _____
Job Name: _____

Dwg. #
AN6533LBF34
or RBF34-ISO

Dwg. By: NMH
DATE: 1/09/2018

*** IMPORTANT NOTICE ***

Clarion Bathware reserves the right to change the design and/or dimensions of its products at any time. This drawing may have been updated since this publication was issued. Before placing an order for any product, refer to our website at www.clarionbathware.com to obtain the most current drawings for any products that you wish to purchase. Compare the date of revision of the drawing that you have with the one on the drawing on our website. If you do not have internet access, please call your sales representative or Clarion Bathware's sales department at 1-800-576-9228.