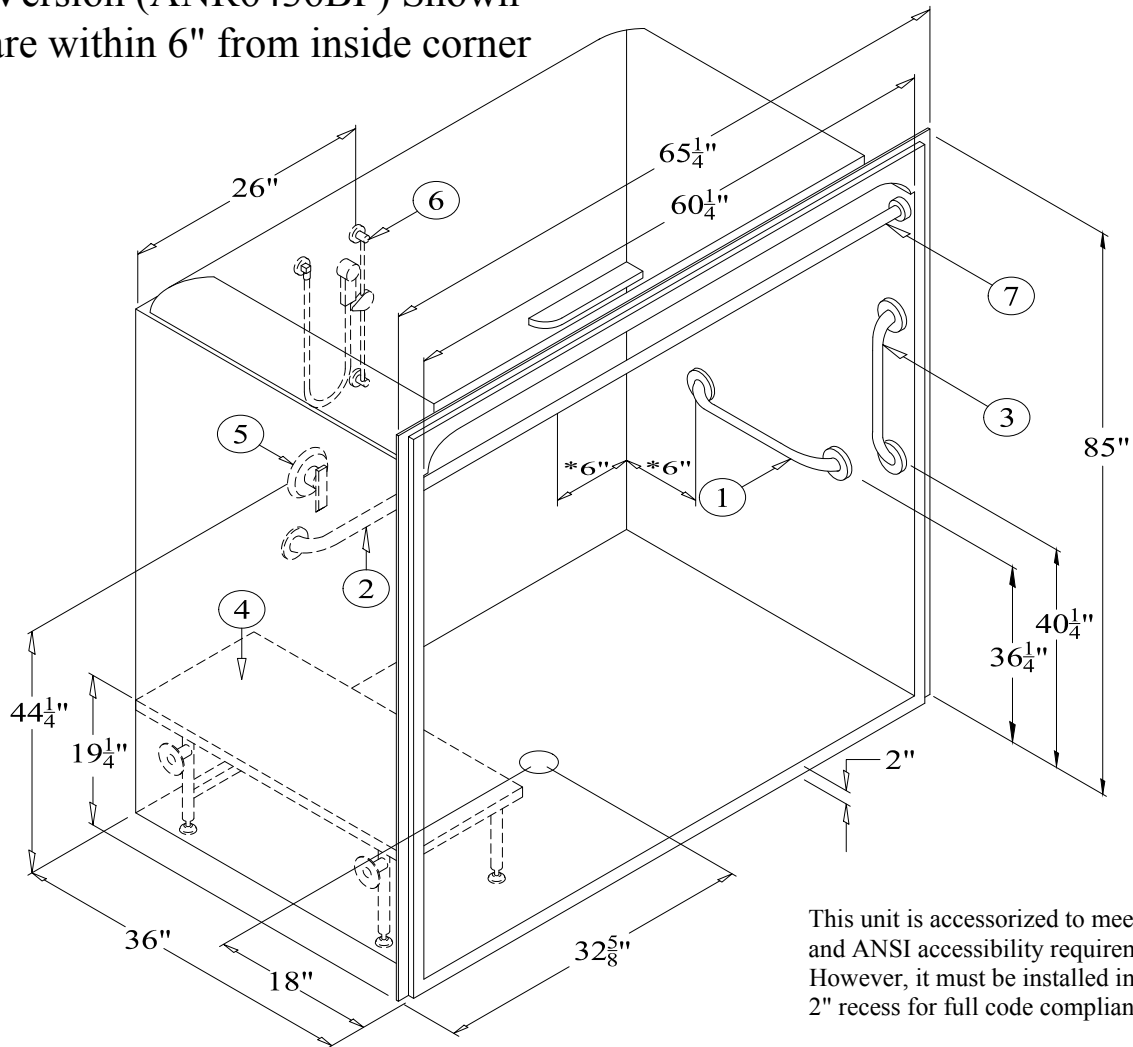


Right Hand Version (ANR6436BF) Shown

\*Grab Bars are within 6" from inside corner



This unit is accessorized to meet ADA and ANSI accessibility requirements. However, it must be installed in a 2\"

## ANL6436BF or ANR6436BF

60\"

### RECOMMENDED ACCESSORIES

1. #5024 GRAB BAR
2. #5036 GRAB BAR
3. #5018 GRAB BAR
4. #400-32\"-SDL FOLDING SEAT
5. #CH-SSMV-1 MIXING VALVE

6. #ZHGB-24 HAND HELD SHWR
7. #CR-59 1/4 CURTAIN ROD
8. CURTAIN (Not Shown)
9. BRASS DRAIN (Not Shown)

### \*\*\* IMPORTANT NOTICE \*\*\*

Clarion Bathware reserves the right to change the design and/or dimensions of its products at any time. This drawing may have been updated since this publication was issued. Before placing an order for any product, refer to our website at [www.clarionbathware.com](http://www.clarionbathware.com) to obtain the most current drawings for any products that you wish to purchase. Compare the date of revision of the drawing that you have with the one on the drawing on our website. If you do not have internet access, please call your sales representative or Clarion Bathware's sales department at 1-800-576-9228.