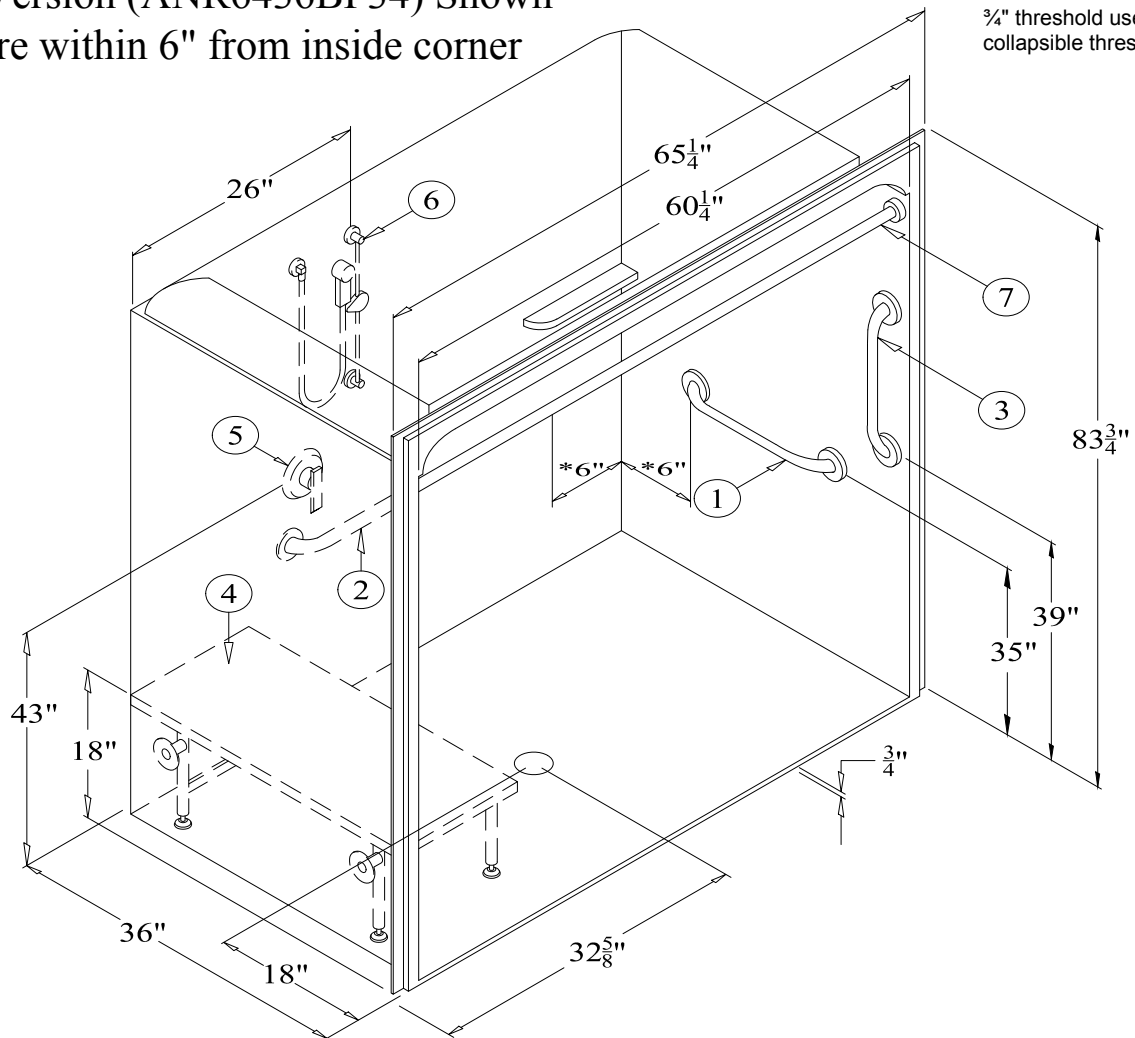


Right Hand Version (ANR6436BF34) Shown

*Grab Bars are within 6" from inside corner

*We recommend all units with a 3/4" threshold use the available collapsible threshold.



ANL6436BF34 or ANR6436BF34

60" (overall width 65-1/4") Acrylic Barrier-Free Shower w/ 3/4" [19mm] Threshold,
Molded Soap Ledge, Molded Dome, & Center Drain

RECOMMENDED ACCESSORIES

1. #5024 GRAB BAR
2. #5036 GRAB BAR
3. #5018 GRAB BAR
4. #400-29"-SDL FOLDING SEAT
5. #CH-SSMV-1 MIXING VALVE

6. #ZHGB-24 HAND HELD SHWR
7. #CR-59 1/4 CURTAIN ROD
8. CURTAIN (Not Shown)
9. Collapsible Threshold Kit 2.5a (Not Shown)
10. BRASS DRAIN (Not Shown)

Clarion
BATHWARE
44 Amsler Ave.
Shippensburg, PA 16254

Phone: (814) 226-5374
Toll Free: (800) 576-9228
Fax: (814) 226-0730
www.clarionbathware.com

Signatures For Approval:

Customer: _____

Arch./Engr: _____

Date: _____

Quote #: _____

Job Name: _____

Dwg. #
ANL or
ANR6436BF34-ISO

Dwg. By: NMH
DATE: 1/09/2018

*** IMPORTANT NOTICE ***

Clarion Bathware reserves the right to change the design and/or dimensions of its products at any time. This drawing may have been updated since this publication was issued. Before placing an order for any product, refer to our website at www.clarionbathware.com to obtain the most current drawings for any products that you wish to purchase. Compare the date of revision of the drawing that you have with the one on the drawing on our website. If you do not have internet access, please call your sales representative or Clarion Bathware's sales department at 1-800-576-9228.