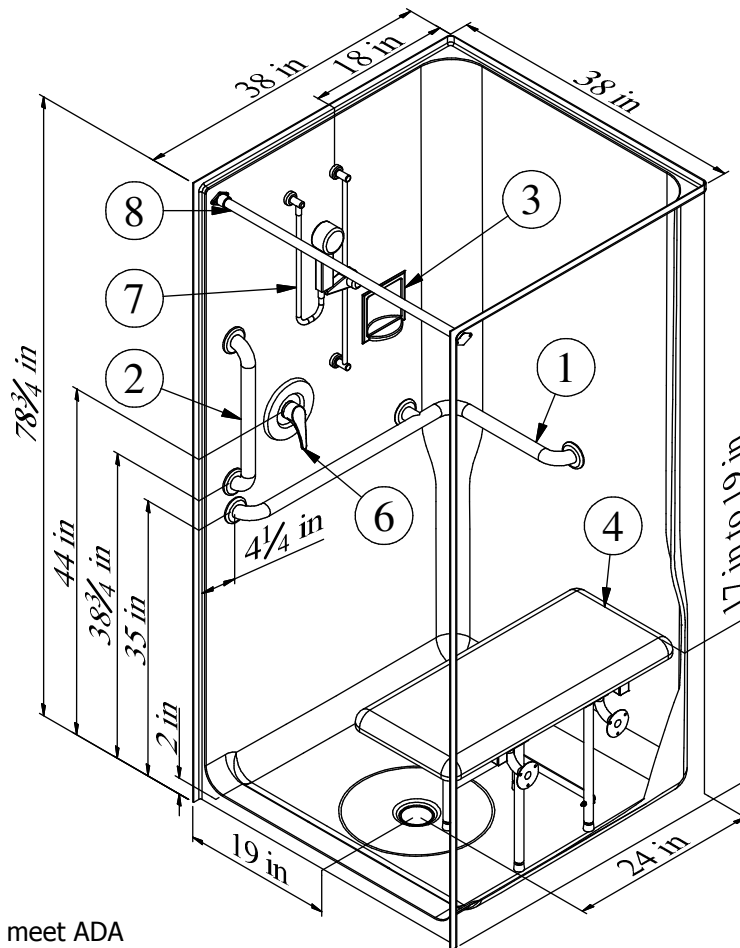


Left Hand Version (MP3837LBF) Shown



This unit is accessorized to meet ADA & ANSI accessibility requirement.

Barrier-Free installation requires a 1-1/2" [38mm] recess.

MP3837LBF or MP3837RBF

38" [965mm] Barrier-Free Shower w/ 2" [51mm] Threshold & Center Drain

RECOMMENDED ACCESSORIES

1. #503218 GRAB BAR

2. #5018 GRAB BAR

3. #660 SOAP DISH

4. #400-33.5"-SDL FOLDING SEAT

5. BRASS DRAIN (Not Shown)

6. #CH-SSMV-1 MIXING VALVE

7. #ZHGB-24 HAND HELD SHWR

8. #CR-35 1/2 CURTAIN ROD

9. CURTAIN (Not Shown)

Clarion
BATHWARE
44 Amsler Ave.
Shippensburg, PA 16254

Phone: (814) 226-5374
Toll Free: (800) 576-9228
Fax: (814) 226-0730
www.clarionbathware.com

Signatures For Approval:

Customer: _____

Arch./Engr: _____

Quote #: _____

Job Name: _____

Date: _____

DWG. #
MP3837LBF or RBF
-ISO

By: NMH
Date: 8/18/2014