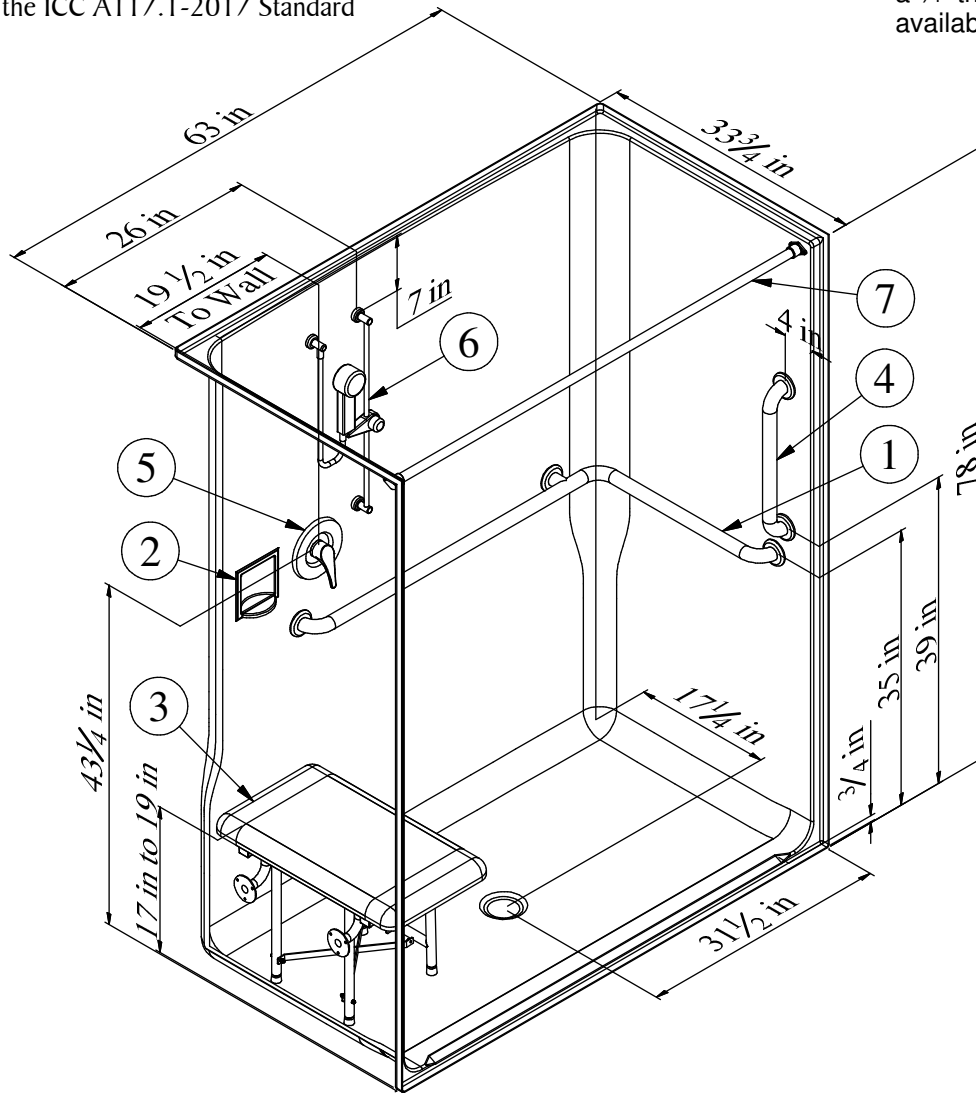


Right Hand Version (MP6333RBF34) Shown
Accessorized to meet the ICC A117.1-2017 Standard

*We recommend all units with a 3/4" threshold use the available collapsible threshold.



MP6333LBF34 or MP6333RBF34

63" [1600mm] Barrier Free Shower w/ 3/4" [19mm] Threshold & Center Drain

RECOMMENDED ACCESSORIES

1. #504426TS Grab Bar
2. #660 SOAP DISH
3. #400-26.5"-SDL FOLDING SEAT
4. #5018 Grab Bar
5. #CH-SSMV-1 MIXING VALVE
6. #ZHGB-24 HAND HELD SHWR
7. #CR-59 1/4 CURTAIN ROD
8. CURTAIN (Not Shown)
9. Collapsible Threshold Kit 2.5a (Not Shown)
10. BRASS DRAIN (Not Shown)