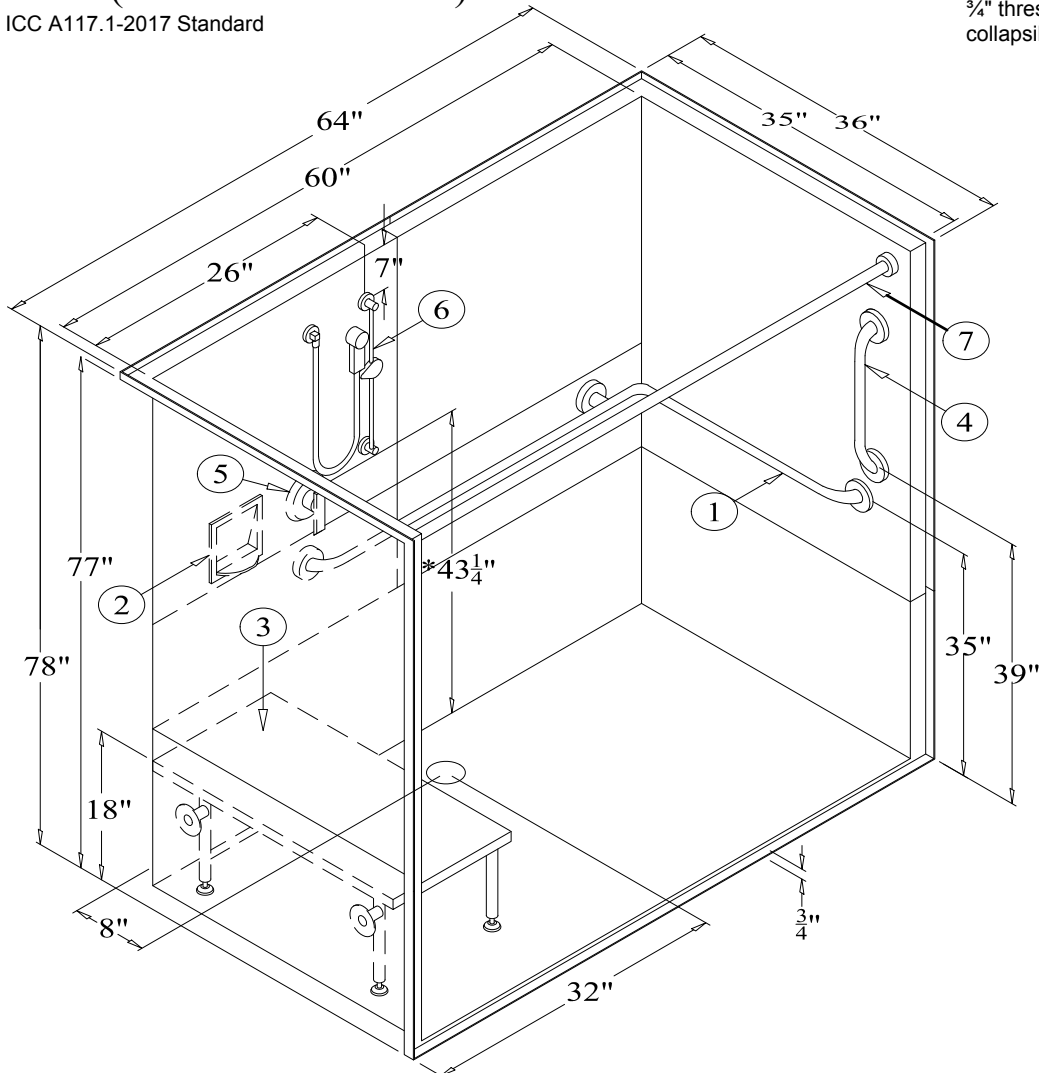


Right Hand Version (MP6436RBFKD34) Shown

Accessorized to meet the ICC A117.1-2017 Standard

*We recommend all units with a 3/4" threshold use the available collapsible threshold.



MP6436LBFKD34 or MP6436RBFKD34

64" [1626mm] 3-Piece Barrier-Free Shower w/ 3/4" [19mm] Threshold
& Rear Center Drain

RECOMMENDED ACCESSORIES

1. #504426TS GRAB BAR
2. #660 SOAP DISH
3. #400-29"-SDL FOLDING SEAT
4. #5018 GRAB BAR
5. #CH-SSMV-1 MIXING VALVE

6. #ZHGB-24 HAND HELD SHWR
7. #CR-59 1/4 CURTAIN ROD
8. CURTAIN (Not Shown)
9. Collapsible Threshold Kit 2.5a (Not Shown)
10. BRASS DRAIN (Not Shown)

Clarion
BATHWARE
44 Amsler Ave.
Shippensburg, PA 16254

Phone: (814) 226-5374
Toll Free: (800) 576-9228
Fax: (814) 226-0730
www.clarionbathware.com

Signatures For Approval:

Customer: _____
Arch./Engr: _____

Date: _____

Quote #: _____
Job Name: _____

Dwg. #
MP6436LBFKD34
or RBFKD34-ISO

Dwg. By: NMH
DATE: 12/06/2017

*** IMPORTANT NOTICE ***

Clarion Bathware reserves the right to change the design and/or dimensions of its products at any time. This drawing may have been updated since this publication was issued. Before placing an order for any product, refer to our website at www.clarionbathware.com to obtain the most current drawings for any products that you wish to purchase. Compare the date of revision of the drawing that you have with the one on the drawing on our website. If you do not have internet access, please call your sales representative or Clarion Bathware's sales department at 1-800-576-9228.