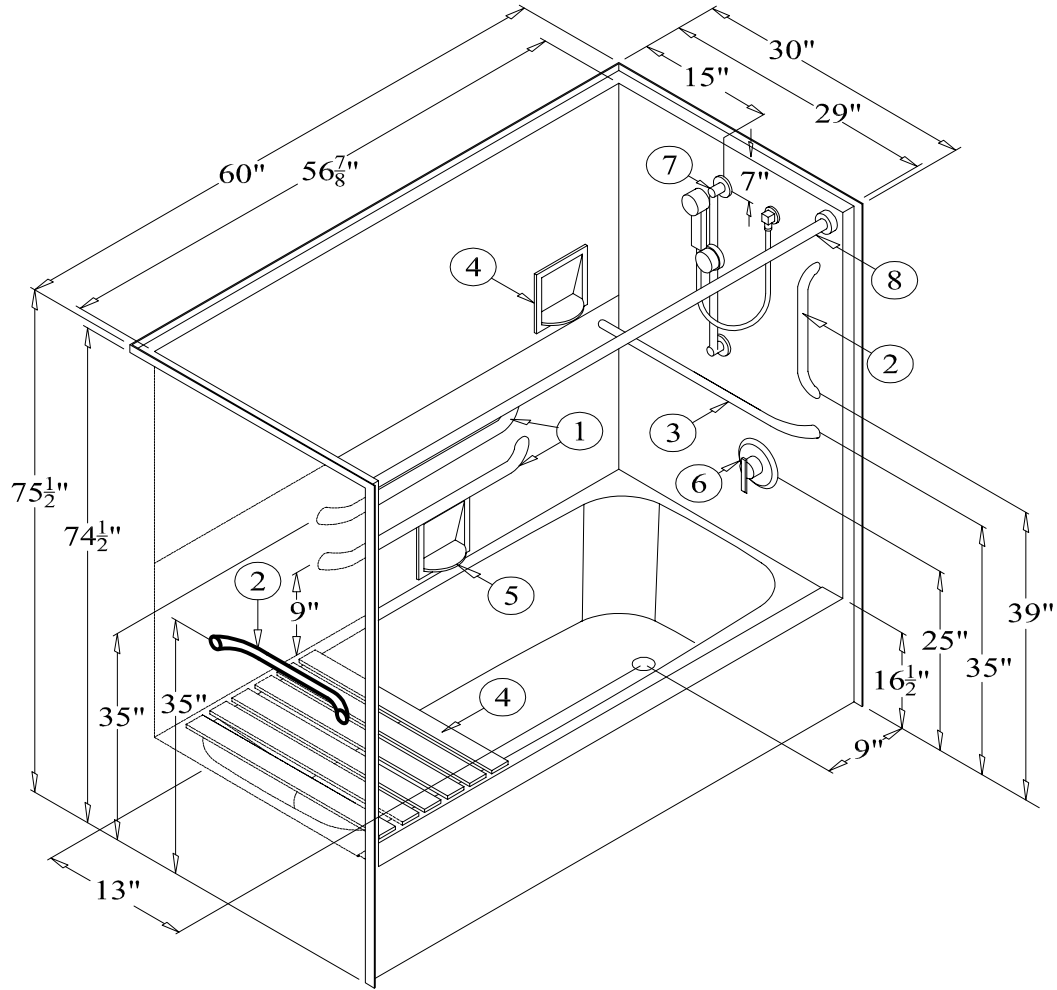


Right Hand Version (MP7920R) Shown



## MP7920L or MP7920R

60" [1524mm] Tub/Shower w/ 16-1/2" [419mm] Apron & Left or Right Hand Drain

### RECOMMENDED ACCESSORIES

- |                                  |                            |
|----------------------------------|----------------------------|
| 1. #BAR-24FLWTZ GRAB BAR (Qty 2) | 6. #CH-SSMV-1 MIXING VALVE |
| 2. #BAR-18FLWTZ GRAB BAR (Qty 2) | 7. #ZHGB-24 HAND HELD SHWR |
| 3. #BAR-26 3/4 FLWTZ GRAB BAR    | 8. #CR-56 CURTAIN ROD      |
| 4. FOLDING SEAT                  | 9. CURTAIN (Not Shown)     |
| 5. #660 SOAP DISH (Qty 2)        |                            |

**Clarion**  
BATHWARE

44 Amsler Ave.  
Shippensburg, PA 16254

Phone: (814) 226-5374  
Toll Free: (800) 576-9228  
Fax: (814) 226-0730  
www.clarionbathware.com

Signatures For Approval:

Customer: \_\_\_\_\_

Arch./Engr: \_\_\_\_\_

Date: \_\_\_\_\_

Quote #: \_\_\_\_\_

Job Name: \_\_\_\_\_

Dwg. #  
MP7920L or R  
-ADA ISO

Dwg. By: NMH  
DATE: 6/8/2015

### \*\*\* IMPORTANT NOTICE \*\*\*

Clarion Bathware reserves the right to change the design and/or dimensions of its products at any time. This drawing may have been updated since this publication was issued. Before placing an order for any product, refer to our website at [www.clarionbathware.com](http://www.clarionbathware.com) to obtain the most current drawings for any products that you wish to purchase. Compare the date of revision of the drawing that you have with the one on the drawing on our website. If you do not have internet access, please call your sales representative or Clarion Bathware's sales department at 1-800-576-9228.