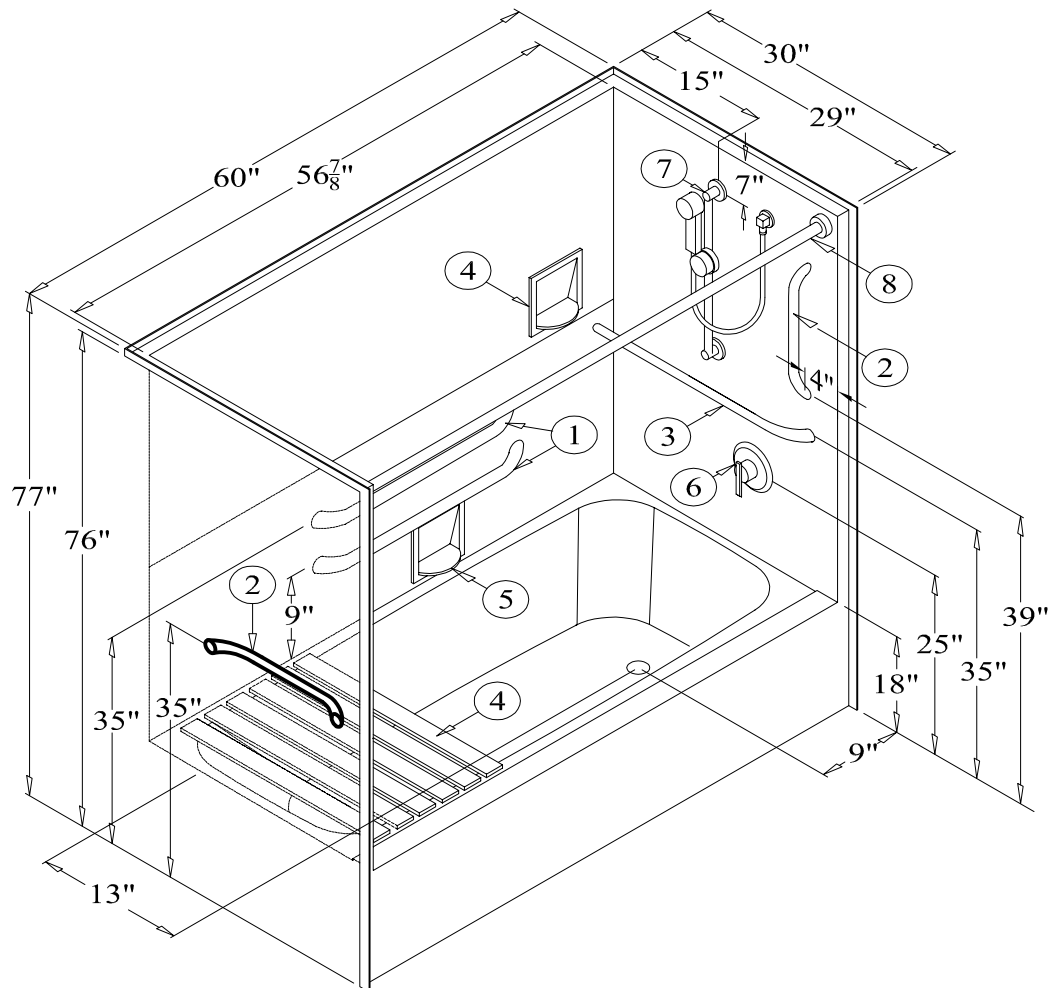


Right Hand Version (MP7920RX) Shown



MP7920LX or MP7920RX

60" [1524mm] Tub/Shower w/ 18" [457mm] Apron & Left or Right Hand Drain

RECOMMENDED ACCESSORIES

- | | |
|----------------------------------|----------------------------|
| 1. #BAR-24FLWTZ GRAB BAR (Qty 2) | 6. #CH-SSMV-1 MIXING VALVE |
| 2. #BAR-18FLWTZ GRAB BAR (Qty 2) | 7. #ZHGB-24 HAND HELD SHWR |
| 3. #BAR-26 3/4FLWTZ GRAB BAR | 8. #CR-56 CURTAIN ROD |
| 4. FOLDING SEAT | 9. CURTAIN (Not Shown) |
| 5. #660 SOAP DISH (Qty 2) | |

Clarion
BATHWARE

44 Amsler Ave.
Shippensburg, PA 16254

Phone: (814) 226-5374
Toll Free: (800) 576-9228
Fax: (814) 226-0730
www.clarionbathware.com

Signatures For Approval:

Customer:

Arch./Engr

Date:

Dwg. #
MP7920LX
or RX-ADA ISO

Quote #:

Job Name:

Dwg. By: NMH
DATE: 6/8/2015

***** IMPORTANT NOTICE *****

Clarion Bathware reserves the right to change the design and/or dimensions of its products at any time. This drawing may have been updated since this publication was issued. Before placing an order for any product, refer to our website at www.clarionbathware.com to obtain the most current drawings for any products that you wish to purchase. Compare the date of revision of the drawing that you have with the one on the drawing on our website. If you do not have internet access, please call your sales representative or Clarion Bathware's sales department at 1-800-576-9228.