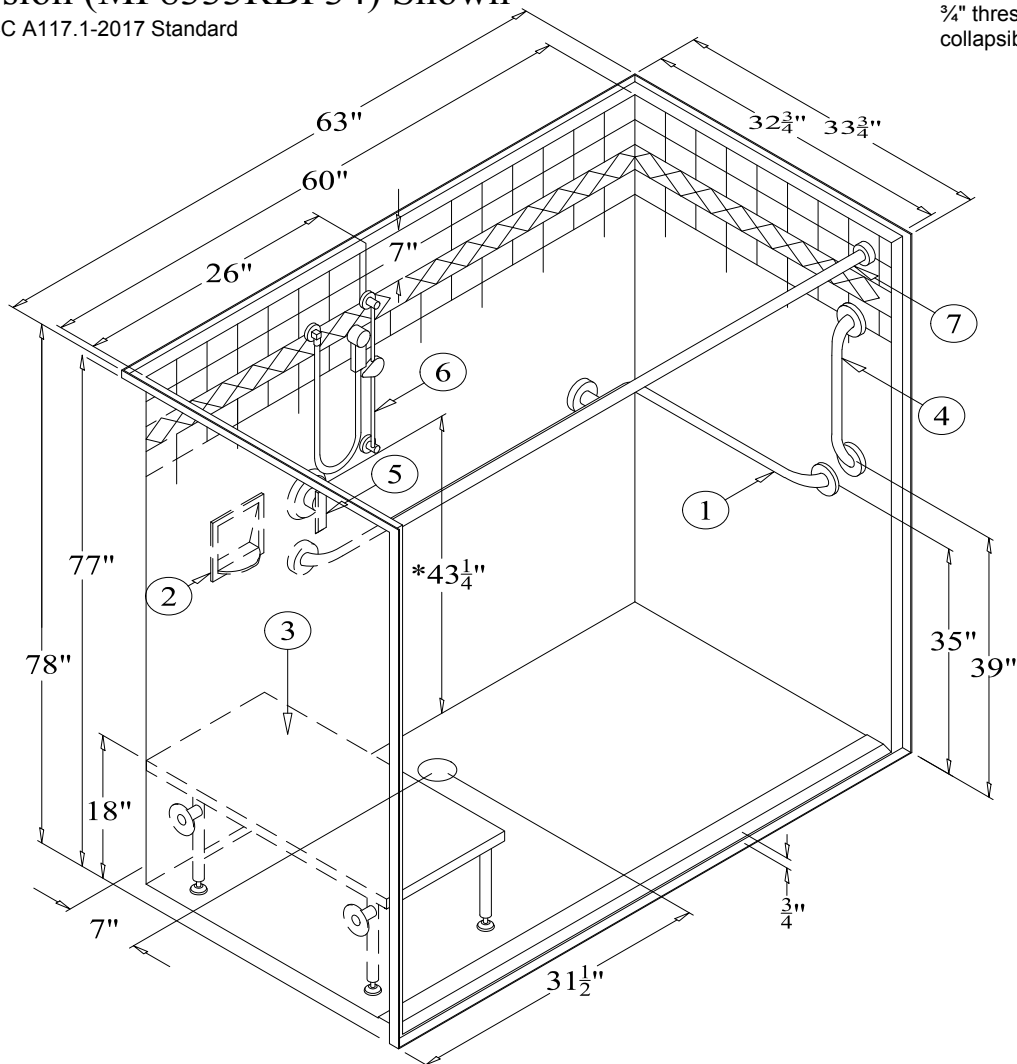


Right Hand Version (MP8333RBF34) Shown

Accessorized to meet the ICC A117.1-2017 Standard

*We recommend all units with a 3/4" threshold use the available collapsible threshold.



MP8333LBF34 or MP8333RBF34

63" [1600mm] Tiled Barrier-Free Shower w/ 3/4" [19mm] Threshold
& Rear Center Drain

RECOMMENDED ACCESSORIES

- | | |
|--------------------------------|---|
| 1. #504426TS GRAB BAR | 6. #ZHGB-24 HAND HELD SHWR |
| 2. #660 SOAP DISH | 7. #CR-59 1/4 CURTAIN ROD |
| 3. #400-26.5"-SDL FOLDING SEAT | 8. CURTAIN (Not Shown) |
| 4. #5018 GRAB BAR | 9. Collapsible Threshold Kit 2.5a (Not Shown) |
| 5. #CH-SSMV-1 MIXING VALVE | 10. BRASS DRAIN (Not Shown) |

*** IMPORTANT NOTICE ***

Clarion Bathware reserves the right to change the design and/or dimensions of its products at any time. This drawing may have been updated since this publication was issued. Before placing an order for any product, refer to our website at www.clarionbathware.com to obtain the most current drawings for any products that you wish to purchase. Compare the date of revision of the drawing that you have with the one on the drawing on our website. If you do not have internet access, please call your sales representative or Clarion Bathware's sales department at 1-800-576-9228.