

INSTITUTIONAL ACRYLIC BARRIER FREE SHOWER INSTALLATION

Prefix: AN

Rev. #: 1/18/13



Key Points to remember during installation

1. The subfloor must be 100% flat, level and free from obstructions of any kind.
2. When installed, the drain of the shower and the piping must be centered on the core or box out prepared in the subfloor. Check to make sure that the core is drilled deep enough (At least 2") for the drain fitting that you are using, and that nothing will prevent it from allowing the floor of the unit to rest on the subfloor as designed. Please note that the drain pocket of this shower will protrude below the subfloor as shown in Figure 2 in this manual.
3. In buildings with a poured in place floor, make sure that there is no lip at the edge of the drain box out area.
4. If installing the drain fitting prior to installation of the shower, precautions must be taken to keep the shower from resting on the drain fitting. Failure to do this may cause warping or cracking of the shower floor.
5. When plumbing, there should be no fittings installed on the drain pipe within 2 ½" of the top of the subfloor. This will interfere with the drain fitting and cause the floor of the unit not to rest on the subfloor as designed.

WARNING: FAILURE TO FOLLOW THESE INSTALLATION INSTRUCTIONS COULD VOID THIS PRODUCTS WARRANTY.

The barrier-free threshold is a very sensitive unit to properly install. It is very important that the procedures are followed exactly during the installation process to create the ideal barrier free access area. A licensed plumber is required to install or supervise the installation of these units. These units are thoroughly tested in the plant to ensure their ability to drain water properly. Failure to follow these handling and installation instructions may cause improper drainage, thus voiding the unit's warranty.

Clarion Bathware's Barrier Free Acrylic Showers are to be stored in a dry area prior to installation to prevent moisture from attacking the reinforcement material which could cause warpage to the unit. Additionally, the units cannot be stored in a manner where the bottom of the unit and the drain are forced upward.

To maintain an ADAAG or ANSI A117.1 compliant barrier-free condition, All Acrylic Transfer Type 2" barrier-free unit must be installed in a 1½" recess. All Acrylic Roll-In Type 2" barrier-free unit must be installed in a 2" recess to maintain a barrier-free condition. *** If you do not need to meet ADAAG or ANSI A117.1 accessibility requirements, you do not need to recess these units.

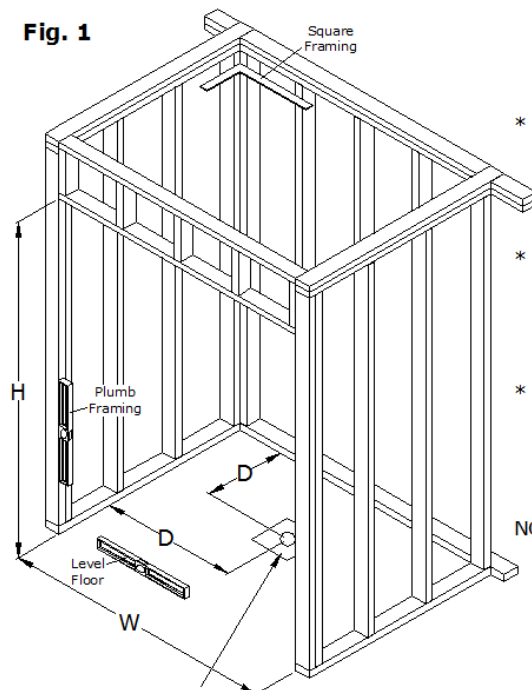
Unit Preparation

Remove all factory-shipping packaging and braces. On the bottom of the back wall there is a piece of OSB board for shipping purposes. This needs to be cut down so that it will not interfere with leveling the shower stall properly. To do this, set a circular saw to cut a 7/16" deep cut. Cut the OSB that extends past the bottom of the unit. Use caution when cutting, there are wood blocks that are secured with metal staples on the inside edge of the board. *****This board should not be removed until the unit is ready to be installed. Removal of the board before installation may void the warranty.*****

Figure 1 & 2

Frame a square and plumb pocket to dimension of the unit. For easier installation and removal of the product the header for top nailing flange may be framed after final installation of the unit. The floor of the pocket must be prepared perfectly flat and level to obtain proper drainage. If there are any obstructions, you will need to chisel or cut the concrete out to create a surface that allows for proper slope to the drain. Depending upon the core opening in the concrete slab, the installer may find it necessary to core a larger and/or deeper opening permitting adequate clearance for the drain. An 8" core at least 2" deep may be desirable. If the core cut is larger than 8" x 8" or 8" diameter, we recommend back filling the core cut, sloping the fill to the drain. This will assure that the area of the floor around the drain receives proper support.

Fig. 1



* H= Height of framing pocket. This is attained by subtracting 1" from the dimensions provided on the cutsheet of the unit which shows the height of the unit.

* W= Width of framing pocket. This is attained by subtracting 2" from the dimensions provided on the cutsheet of the unit which shows the width of the unit.

* D= Dimensions provided on the cutsheet of the unit which show the drain location.

NOTE: Accommodations should be made in the pocket dimensions for any accessories attached to the unit.

Fig. 1.1

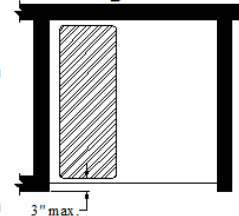
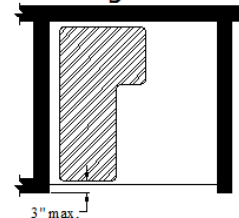


Fig. 1.2



8" x 8" or 8" Dia. Core at least 2" deep must be drilled on center with the drain to permit the drain area to be pulled down by the plumbing connection. The drain must be aligned in the center of the core to insure proper installation and drainage slope.

For ADA Compliant 36" Transfer Showers: The front edge of the seat must be no more than 3" [76mm] from the compartment entry. To achieve this with Clarion Bathware's units, the front gelcoat surface of the unit must be no more than 1-1/2" [38mm] from the finished wall in front of the shower. This will need to be taken into consideration when framing the pocket. (See **Figure 1.1 & Figure 1.2**)

Pocket dimensions and drain location can be obtained from your retailer or at www.clarionbathware.com/search (1) enter model number of the unit then click search, (2) select the product picture, (3) select product cut sheet pdf at bottom right of the page.

Fig. 2 Below is a cross-section view of the subfloor, bedding compound, and the floor of a Clarion Bathware Acrylic shower stall.

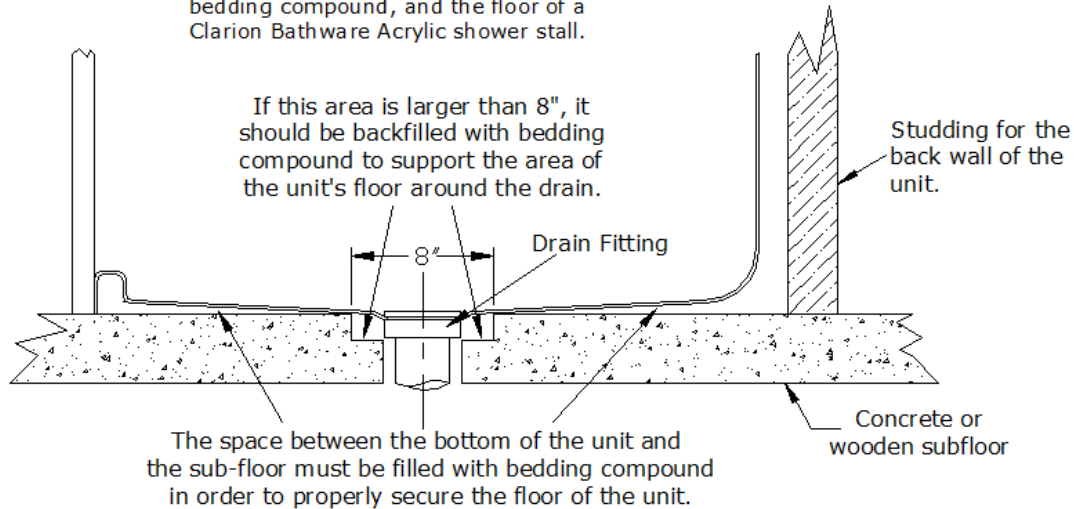


Figure 3

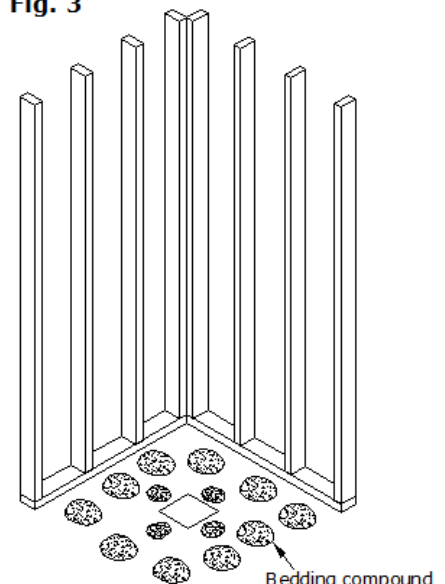
Install the drain and make sure that it is sealed properly and not leaking. Test fit the unit into the framed pocket. Check that the drain is not resting on anything which can force the unit floor upwards. Level and plumb the unit. Attach the front two vertically flanges with one fastener. Using a pencil mark all flanges on the studding. This will assist when setting the unit into the bedding compound. Remove the unit and prepare a bedding compound for the unit to be set into.

****FOAM SHOULD NEVER BE USED AS A BEDDING MATERIAL FOR ARCYLIC SHOWERS. ****

A proper bedding compound would be cement slurry, thin mortar mix, setting type drywall compound, or lightweight gypsum plaster. Although all the listed products are acceptable, Clarion Bathware recommends using lightweight gypsum plaster for optimal results. In addition to being a user friendly product to use it also has a slow curing time and a compression rating of about 700 PSI. Two brands of this plaster to look for are Gold Bond Gypsolite Plaster and US Gypsum Structo-Lite Plaster.

Mix the bedding compound to a manageable consistency. If the bedding material is too thick it may not spread out properly and can cause the unit floor to be forced up. If the bedding material is too thin it may seep out from under the unit. This can cause improper support of the unit floor. After mixing the bedding material to a consistency of "cool-whip", place it onto the floor in mounds keeping in mind the area around the drain will be thinner due to the slope of the shower floor. Placing the bedding material in mounds reduces waste and over application which may cause the unit to drain improperly or not at all. When the unit is set onto the mounds, they will spread out easier than trying to completely cover the entire floor. Small void areas of 2"-3" are not a problem as the shower floor has sufficient strength to bridge them.

Fig. 3

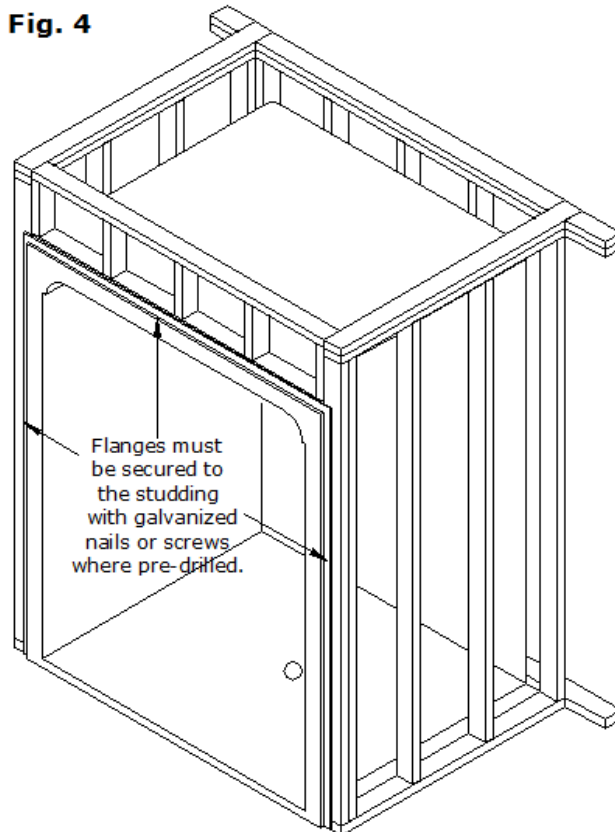


NOTE: The right side of the studding is omitted from this figure to simplify the illustration.

Figure 4

Set the unit in the bedding compound. Align the flanges of the unit with the pencil marks. Check that the unit is plumb and level then attach each vertical flange with a fastener so that the unit won't shift. Check the floor of the shower for high spots that could restrict the water drainage. High spots in the bedding compound under the floor can be worked out by applying pressure to the area. Install the header for the top nailing flange. The threshold of the unit should be fairly flat with no depressions. A slight rise is acceptable as long as proper slope to the drain is maintained. When the unit is plumb and level, and the slope to the drain is assured, finish securing the flanges with galvanized nails or screws through the predrilled holes provided on the flanges. Please note that on acrylic products, the horizontal flanges of acrylic units must be secured to the studding to ensure a proper installation. ***(In an application where the unit is installed over wall board and will be installing a Clarion Bathware Trim Kit, for best results your fasteners will need to be flush with the nailing flange. Clarion Bathware recommends centering and counter sinking a corrosion resistance fastener on the nailing flange. Raised fasteners will result in a problematic finishing process of the trim kit.)***

Fig. 4



Final Notes:

A floor-leveling agent can be used to smooth the transition between the shower unit and the floor. A smooth transition between the shower unit and the floor is a requirement for ADA compliance. We recommend Feather Finish for all vinyl applications or grout for tile installations.

You can finish off your new unit with a variety of materials which are accepted by local building codes. Some ideas are tile, drywall caulking, drywall mud, plaster, wood or plastic trim.

Clean your new tub with a liquid detergent and warm water.

Do not use any abrasive cleaners such as scouring powder or liquid abrasive cleaners.

IF A BEDDING MATERIAL IS USED UNDER A UNIT; CEMENT SLURRY, THIN MORTAR MIX, PLASTER OF PARIS, OR A COMPARABLE FLOOR FILLING COMPOUND THAT IS NOT WATER SOLUBLE ARE PROPER BEDDING COMPOUNDS. WATER SOLUBLE MATERIALS, FOAM AND OTHER EXPANDING MATERIALS ARE NEVER TO BE USED AS A BEDDING COMPOUND.

IF YOU HAVE ANY QUESTIONS REGARDING INSTALLATION OF YOUR CLARION BATHWARE PRODUCT, PLEASE CALL OUR CUSTOMER SERVICE DEPARTMENT AT 1 (800) 576-9228 EXT. #818 OR BY E-MAIL AT CUSTOMERSERVICE@CLARIONBATHWARE.COM

JOB SITE INSTALLATION OF OWNER SUPPLIED ACCESSORIES

All Clarion Bathware units purchased with supplied grab bars are custom reinforced at the factory to accommodate the mounting of said bars.

Any grab bars installed on a Clarion Bathware unit at the job site must have proper reinforcement (wood support and backing plates) at all mounting areas and should comply with ANSI A117.1, Uniform Federal Accessibility Standards (UFAS) and ASTM F446 specifications for grab bars in the bathing area.

Job-site installation of third party supplied grab bars is entirely at the risk and full responsibility of the owner. Any damage to Clarion Bathware units or the property during or after grab bar installation, or any injuries due to improper installation remain the sole responsibility of said owner and cannot be attributed to Clarion Bathware, Inc.

*****WE SUGGEST THAT THE CUSTOMER AVOIDS USING A BATH MAT IN THE UNIT, AS IT COULD CAUSE WATER STAINS OR BLISTERING TO THE FINISH SURFACE OF THE UNIT.**

CLARION BATHWARE PRODUCTS ARE CERTIFIED TO MEET NAHB STANDARDS, HUD/FHA, BOCA, HUD UM-73A, ANSI Z124.1 AND ANSI Z124.2. FOR DETAILS, REQUEST NAHB RESEARCH CENTER CONFIRMATION.



44 Amsler Avenue Shippenville, PA 16254
(814) 226-5374 (800) 576-9228
Customer Service: Ext. #818
Fax: (814) 226-0730
www.clarionbathware.com



Premium Cast Acrylic Five (5) Year Warranty



Clarion Bathware warrants to the original purchaser and consumer that its products will be free from defects in material or workmanship when properly installed pursuant to Clarion Bathware installation instructions for the following warranty periods:

Five (5) Year Warranty*

(1) Premium Cast Acrylic

Upon inspection by an authorized representative, Clarion Bathware will repair or exchange at its sole discretion, any unit found to be defective in material or workmanship. The exchange of a unit will only be considered when Clarion Bathware has eliminated all options to restore the unit to acceptable factory condition. Exchange of a unit is limited to supplying replacement product of comparable size and style, and does not include any cost of removal or installation.

EXCEPTIONS

This warranty shall be voided if the unit is moved from its place of initial installation or is not installed in accordance with the instructions supplied by the manufacturer of the unit. Clarion Bathware will not be held responsible for any damages resulting from improper installation.

Further, this warranty does not apply if the unit has been subjected to accident, abuse, misuse, damage caused by flood, fire, or other force of nature.

Any unauthorized repair or modification to the product would render the warranty null and void.

This warranty does not apply to any equipment or accessories not installed by Clarion Bathware and Clarion Bathware will not be held liable for any results of such acts.

Clarion Bathware is not responsible for any consequential or incidental mishaps, inconvenience, time loss, incidental expense, materials or labor related to the installation of hardware or the actual tub.

The owner agrees by use of the unit that the obligations of Clarion Bathware shall not extend to contingent or indirect damage or injury to the structure of its contents, that the obligations of Clarion Bathware are limited to those set forth herein, and that no other obligations, expressed or implied, are assumed by Clarion Bathware.

The product is not recommended for outside storage.

To obtain warranty service, the Customer must give prompt notice to Clarion Bathware of any claim.

Clarion Bathware is a division of American Bath Group Inc.

****Note:** Premium Cast Acrylic Five (5) Year Warranty may be superseded by specific Brand or Product Collection Warranties. Clarion Bathware Premium Cast Acrylic Five (5) Year Warranty will be the minimum length Warranty for any Premium Cast Acrylic products.