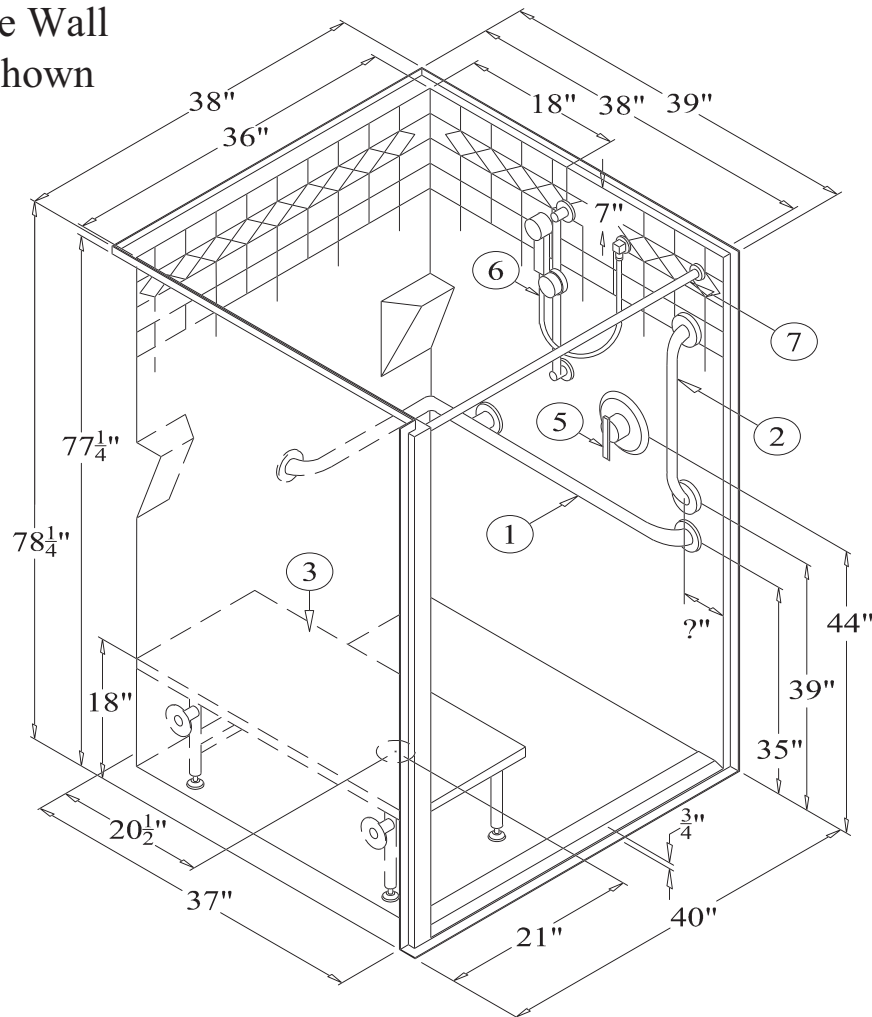


Left Side Return Flange
w/ Right Side Valve Wall
(MP8841RBF34) Shown

*We recommend all units with a 3/4" threshold use the available collapsible threshold.



MP8841BF34 or MP8842BF34

38" (overall width 40") Tiled Barrier-Free Shower w/ Single Return Flange,
3/4" [19mm] Threshold, Molded Shelving, & Center Drain

The seat must be located on the same side of the unit as the reveal flange to meet ADA-compliance.

RECOMMENDED ACCESSORIES

- | | |
|----------------------------|---|
| 1. #503218TS GRAB BAR | 6. #ZHGB-24 HAND HELD SHWR |
| 2. #5018 GRAB BAR | 7. #CR-35 1/2 CURTAIN ROD |
| 3. #400 -33.5" SHOWER SEAT | 8. CURTAIN (Not Shown) |
| 4. BRASS DRAIN (Not Shown) | 9. Collapsible Threshold Kit 2.5a (Not Shown) |
| 5. #CH-SSMV-1 MIXING VALVE | |

Clarion
BATHWARE
44 Amsler Ave.
Shippensburg, PA 16254

Phone: (814) 226-5374
Toll Free: (800) 576-9228
Fax: (814) 226-0730
www.clarionbathware.com

Signatures For Approval:

Customer: _____

Arch./Engr: _____

Date: _____

Quote #: _____

Job Name: _____

Dwg. #
MP8841BF34 or
MP8842BF34-ISO

Dwg. By: NMH
DATE: 8/22/2014

*** IMPORTANT NOTICE ***

Clarion Bathware reserves the right to change the design and/or dimensions of its products at any time. This drawing may have been updated since this publication was issued. Before placing an order for any product, refer to our website at www.clarionbathware.com to obtain the most current drawings for any products that you wish to purchase. Compare the date of revision of the drawing that you have with the one on the drawing on our website. If you do not have internet access, please call your sales representative or Clarion Bathware's sales department at 1-800-576-9228.