

CD Product Sheet

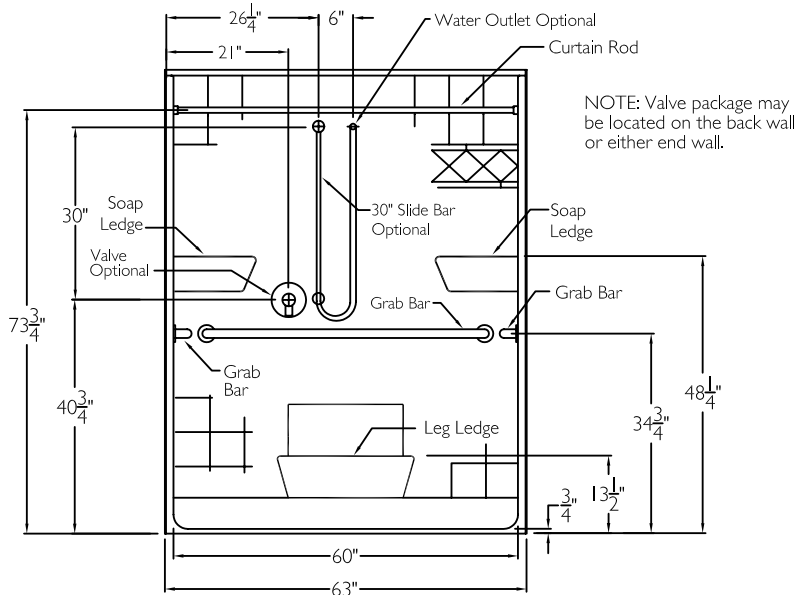
COMMERCIAL CODE COMPLIANT

XST6337BF U-BAR

ADA/ANSI code compliant

NOTE: For ADA/ANSI compliance, pressure balancing mixing valve, hand-held shower with slide bar, vacuum breaker and 60" hose must be installed per ADA/ANSI guidelines.

FRONT VIEW



TECHNICAL INFORMATION

OD 63" x 38.5" x 80.75"

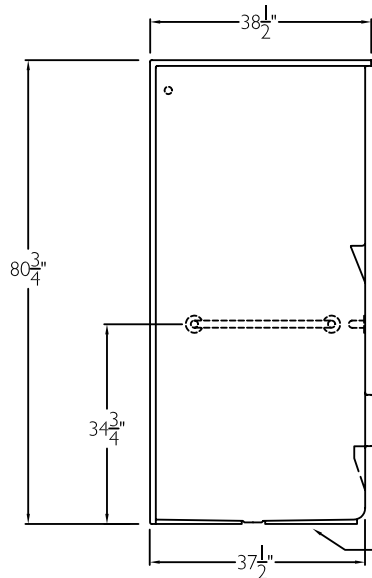
ID 60" x 36.5" center point

LOAD FACTOR 2.0

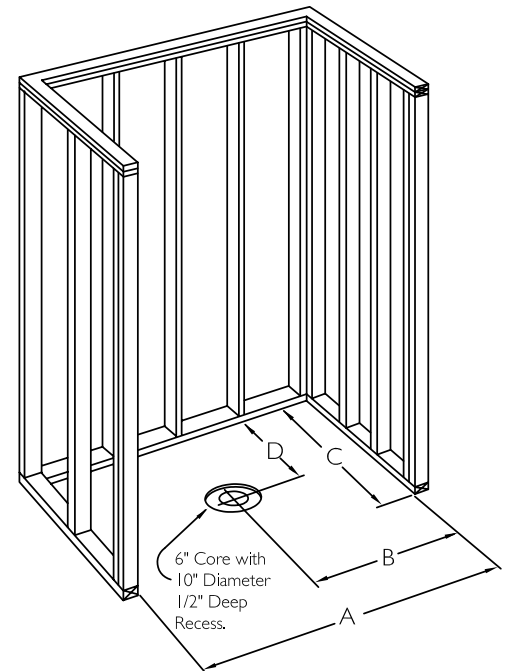
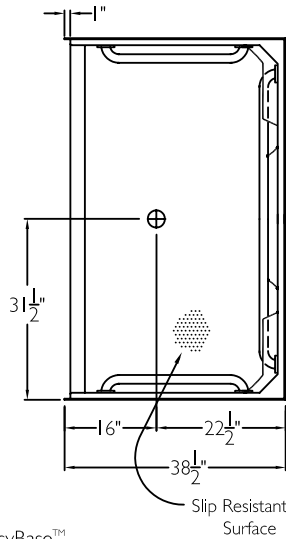
HANDED BY Seat

NOTE: Valve package may be located on the back wall or either end wall.

SIDE VIEW



TOP VIEW



FRAMING DIMENSIONS

A 63.25" B 31.625"

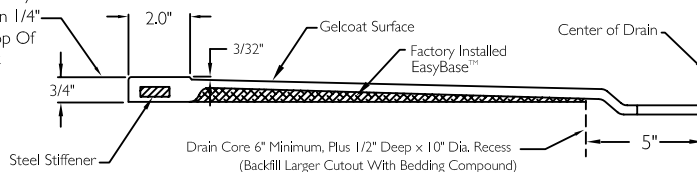
C 38.5" D 20.5"

ADDITIONAL CODES

ICC/ANSI I 7.1, ANSI I 24.2, ADAAG, BOCA, NAHBUPC, Southern Building Code

CROSS SECTION OF THRESHOLD

Coordinate Finished Floor Height For Code. Finished Floor May Be No More Than 1/4" Below The Top Of Compartment Threshold.



cd
comfortdesigns

comfortdesignsbathware.com | 800.443.7269

CODE COMPLIANT
Enhancing Livable Design